



# LSMT

## SCIMITAR SERIES HIGH LUMEN OUTPUT LED AREA LIGHTS

### HIGH DEFINITION LIGHTING

The Scimitar Ultra High Lumen Output LED Area Light is the “go to” LED light fixture to replace existing high wattage systems. Where other LED fixtures on the market fail to deliver the light levels needed for high output applications, the Scimitar surpasses traditional lighting solutions and leads the LED market in output.

The state of the art optical assemblies are available in the all of the standard NEMA beam configurations as well as specialty selections for automotive and tennis specific applications. “High Definition” performance is delivered by providing light as close to natural daylight as possible. By mimicking natural daylight, colors will appear crisper for retail applications such as auto dealerships and visual acuity will be enhanced for active sports applications such as tennis or pickleball courts.

The Scimitar has been tested in an independent laboratory to LM79 and LM80 test standards and is RoHS compliant. The long life LED's are rated for over 50,000 hours of life and the luminaire is backed by a 5-Year Limited Warranty.

Additional innovative, high performance products such as the Scimitar can be found at [www.techlight.com](http://www.techlight.com).



**TECHLIGHT**  
INNOVATION IN ILLUMINATION



## ORDERING INFORMATION

Choose the bold face options for the appropriate luminaire configuration for your application and enter on the line above each fixture attribute. Accessories may be factory installed, depending on the particular accessory chosen, but still be ordered as a separate line item.

EXAMPLE: **LSMT 6 C 130L T4A 1 BZ**

### SERIES

**LSMT** Scimitar Ultra-High Lumen Output LED Area Light

### NUMBER OF LED MODULES

**2** 2 Modules  
**4** 4 Modules  
**6** 6 Modules

(See performance data for Delivered Lumens)

### COLOR TEMPERATURE

**C** Cool White 5000K  
**N** Neutral White 4000K  
**W** Warm White 3000K

### NOMINAL LUMENS

NOMINAL LUMENS	
2 MODULE UNIT	<b>23L</b> = 23,000 Lumens
	<b>25L</b> = 25,000 Lumens
	<b>28L</b> = 28,000 Lumens
	<b>30L</b> = 30,000 Lumens
	<b>33L</b> = 33,000 Lumens
	<b>35L</b> = 35,000 Lumens
	<b>38L</b> = 38,000 Lumens
4 MODULE UNIT	<b>40L</b> = 40,000 Lumens
	<b>43L</b> = 43,000 Lumens
	<b>45L</b> = 45,000 Lumens
	<b>50L</b> = 50,000 Lumens
	<b>55L</b> = 55,000 Lumens
	<b>60L</b> = 60,000 Lumens
	<b>65L</b> = 65,000 Lumens
6 MODULE UNIT	<b>70L</b> = 70,000 Lumens
	<b>75L</b> = 75,000 Lumens
	<b>80L</b> = 80,000 Lumens
	<b>85L</b> = 85,000 Lumens
	<b>90L</b> = 90,000 Lumens
	<b>95L</b> = 95,000 Lumens
	<b>100L</b> = 100,000 Lumens
<b>110L</b> = 110,000 Lumens	
<b>120L</b> = 120,000 Lumens	
<b>130L</b> = 130,000 Lumens	



### OPTICS

**T2** Type II  
**T3** Type III  
**T4** Type IV  
**T4A** Type IV Automotive  
**FAW** Frontline Automotive Wide  
**T4T** Type IV Tennis  
**T5N** Type V Narrow  
**T5M** Type V Medium  
**T5W** Type V Wide

### VOLTAGE

**1** Multi-Volt (100~300V input)  
**2** 347~480V

### OPTIC ROTATION (Leave Blank for standard optics)

**L** Left Rotated Optics  
**R** Right Rotated Optics

### FINISH

**BK** Black  
**BZ** Bronze  
**GR** US Green  
**WH** White  
**SP** Special

### FACTORY INSTALLED OPTIONS (Ordered Separately)

**BTEC** = Integrated Bluetooth Control Module Casambi Ready Mesh Network

**PC2** = 480V Twist-Lock Photocell

**PC6** = Multi-Tap (105-285V) Twist-Lock Photocell

**PCR7** = 7-Pin Twist-Lock Photocell Receptacle ANSI C136.41 and Receptacle Shorting Cap

**IP66** = Additional IP66 Fixture Rating

**(IMS) TLWSFSP-211** = Fixture Mount Passive Infrared Motion Sensor **(IMS Lenses Below, Ordered Separately)**

**TLWSFSP-L3** = 360° lens, maximum coverage 40' diameter from 20' height **(IMS)**

**TLWSFSP-L7** = 360° lens, maximum coverage 100' diameter from 40' height **(IMS)**

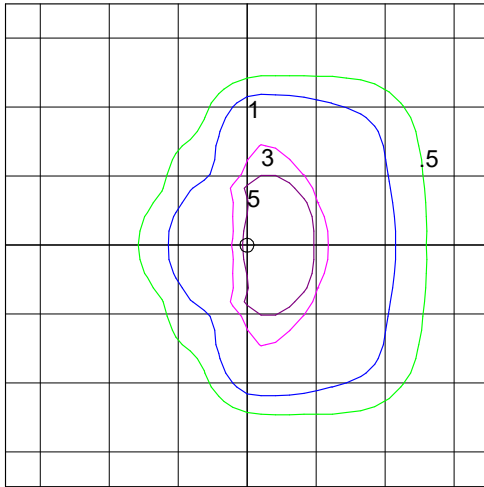


**PHOTOMETRICS**

**Mounting Height = 25ft**

IES INDOOR REPORT  
PHOTOMETRIC FILE  
NAME:  
LSMT 2 C 25L T3

Type III Optical Assembly  
2 Module, Cool White

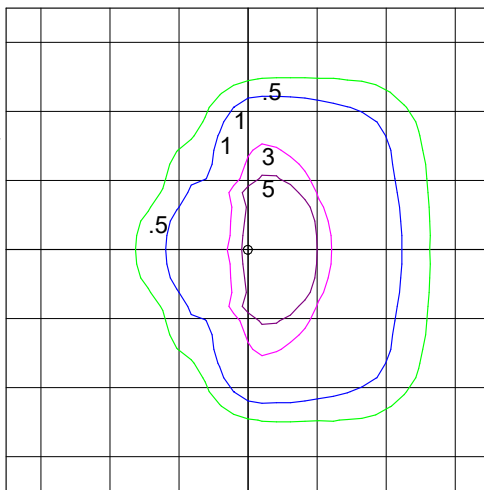


**T3 Optics:**

**Mounting Height = 40ft**

IES INDOOR REPORT  
PHOTOMETRIC FILE  
NAME:  
LSMT 4 C 70L T3

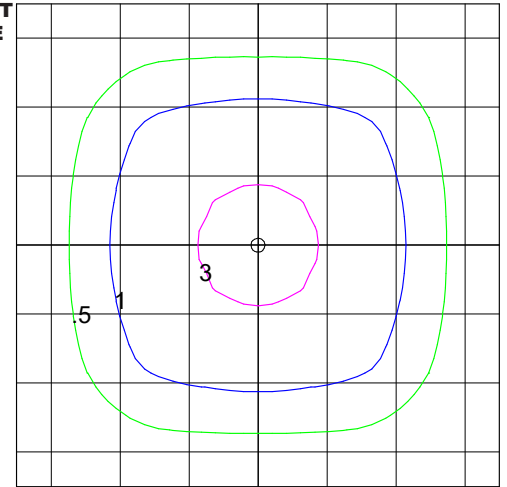
Type III Optical Assembly  
4 Module, Cool White



**Mounting Height = 25ft**

IES INDOOR REPORT  
PHOTOMETRIC FILE  
NAME:  
LSMT 2 C 30L T5W

Type V Wide Optical  
Assembly  
2 Module, Cool White



**T5W Optics:**

**Mounting Height = 40ft**

IES INDOOR REPORT  
PHOTOMETRIC FILE  
NAME:  
LSMT 6 C 95L T5W

Type V Wide Optical  
Assembly  
6 Module, Cool White

