



Catalog Number	
Project	Type

## FEATURES & SPECIFICATIONS

**APPLICATION** — The high lumen output luminaire is designed to be a replacement for HID fixtures up to 1000W. It is optimal for lighting applications where long life, low maintenance, and consistent color rendering is required. Areas with limited accessibility due to fixture location or where heavy pedestrian or vehicle traffic makes maintenance difficult are ideal applications. The high wattage/lumen output allows the fixture to be used for parking, restaurant, quick service, shopping centers or sports lighting applications.

**CONSTRUCTION** — The heavy duty housing is constructed of die cast aluminum with heat dissipating fins. The optical assemblies are sealed in place using a silicone gasket for weather tight protection. Modular LED system for ease of maintenance. ETL listed for wet locations (IP65). Additional IP66 rating available upon request. Fixture can accommodate advanced wireless control, management and reporting systems for outdoor lighting.

**FINISH** — A corrosion-resistant epoxy coat layer that forms a uniform and all-encompassing protective barrier is applied to the fixtures prior to electrostatically applying a super durable polyester powder coat finish. Standard colors available: Black, Bronze, US Green, White. Custom colors available upon request.

**OPTICAL SYSTEM** — Made with a state of the art UV stabilized acrylic high performance refractive optical assemblies that use high transmittance materials to achieve precise photometric distributions. Available in Type V Narrow, V Medium, V Wide and Narrow Spot beam configurations. The full cutoff fixture is Star Light Friendly (meets or exceeds Dark Sky requirements) in the horizontal position.

**ELECTRICAL SYSTEM** — Available in up to a 4 module LED system in 5000K-70 CRI Cool White (+/- 500K) or 4000K-70 CRI Neutral White color temperatures. Consult factory for high CRI (90+) model availability. Available with 100-300V 50/60 Hz or 347V~480V. LED's rated for over 50,000 hours at 25°C

# LSMA-M SERIES

## Scimitar LED Flood Light



SERIES	HOUSING HEIGHT	LENGTH & WIDTH
<b>LSMA</b>	5.23"	22.73" x 16.02"

ambient temperature. 0-10V dimming. Built-in surge protection up to 10 kV. Built-in Active PFC Function >95% Full load. LED Power Supply conforms to UL8750 standards.

**MOUNTING** — Standard mounting option is a (2AF) 2" Adjustable Slip Fitter. Additional mounting options, including a (B15) Trunnion Mount are available for custom applications.

**LISTINGS** — LED Power Supply listed for wet locations (IP65). Meets US and Canadian safety standards. -40°C to 50°C ambient operation. RoHS Compliant. Meets or exceeds DLC requirements.

## ORDERING INFORMATION

Choose the bold face options for the appropriate luminaire configuration for your application and enter on the line above each fixture attribute. Accessories may be factory installed, depending on the particular accessory chosen, but still be ordered as a separate line item.

EXAMPLE:

**LSMA 4 C M T5W D 1 BZ**

LSMA								
SERIES	# OF MODULES	COLOR TEMP	# LED'S PER MODULE	OPTICS	DRIVE CURRENT	VOLTAGE	FINISH	OPTIONS
	<b>1</b> = 1 Module <b>2</b> = 2 Module <b>4</b> = 4 Module	<b>C</b> = Cool White (5000K) <b>N</b> = Neutral White (4000K)	<b>M</b> = 8 Luxeon MX LEDs	<b>T5N</b> = Type V Narrow <b>T5M</b> = Type V Medium <b>T5W</b> = Type V Wide	<b>D</b> = 1050mA	<b>1</b> = Multi-Volt <sup>1</sup> <b>2</b> = 347~480V	<b>BZ</b> = Bronze <b>BK</b> = Black <b>GR</b> = US Green <b>WH</b> = White <b>SP</b> = Special <sup>2</sup>	<b>IP66<sup>4</sup></b> = Additional IP66 Fixture Rating <b>B15<sup>5</sup></b> = Trunnion Mount <b>PC2</b> = 480V Twist-Lock Photocell <b>PC7</b> = Multi-Tap (105-285V) Twist-Lock Photocell <b>PCR7</b> = Twist-Lock Photocell Receptacle

## ACCESSORIES (Order as separate line items)

- SLSMA<sup>6</sup>** Front Light Shield
- S213<sup>3</sup>** Angeled Black Light Shield
- S237<sup>6</sup>** Horizontal Shield
- S238<sup>6</sup>** Vertical Shield
- S240<sup>6</sup>** Three Sided Visor Shield
- S241<sup>6</sup>** Three Sided Full Shield
- S242<sup>6</sup>** Four Sided Shield

## NOTES

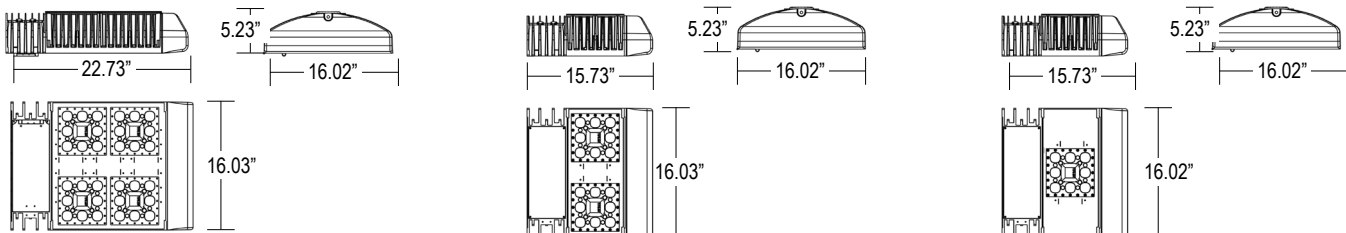
- <sup>1</sup> = Multi-Volt is an auto ranging power supply from 100V to 300V input.
- <sup>2</sup> = Custom RAL color matching is available. Contact your sales representative for additional info.
- <sup>3</sup> = Order one per LED module. Field installed.
- <sup>4</sup> = Additional IP66 rating may not be changed once production has begun on the fixtures.
- <sup>5</sup> = Ordering this option will replace the standard 2AF Adjustable Slip Fitter.
- <sup>6</sup> = Available for 4 module only. Field installed.



# LSMA-M Scimitar LED Flood Light

## AVAILABLE FIXTURE DIMENSIONS

Dimensions shown are for fixture bodies only. Mounting options must be ordered separately.



Dimensions shown for 4 Module Unit

Dimensions shown for 2 Module Unit

Dimensions shown for 1 Module Unit

## FIXTURE & MOUNTING ACCESSORIES

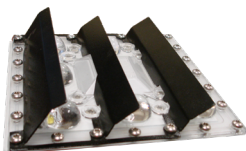
**2AF (Standard)**  
2" Adjustable Slip Fitter



**B15<sup>5</sup> (Option)**  
Trunnion Mount



**S213<sup>3</sup>**  
Angled Back Light Shield



**PCR7**  
Twist-Lock Photocell Receptacle

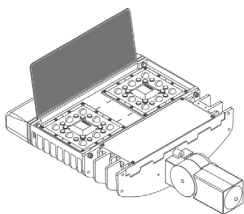


**PC2**  
480V Twist-Lock

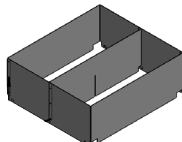


**PC7**  
Multi-Tap (105-285V)  
Twist-Lock Photocell

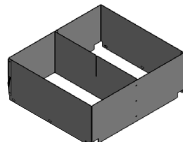
**SLSMA<sup>6</sup>**  
Front Light Shield



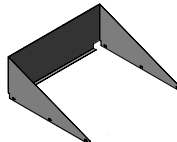
**S237<sup>6</sup>**  
Horizontal Shield



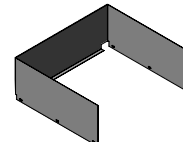
**S238<sup>6</sup>**  
Vertical Shield



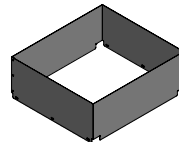
**S240<sup>6</sup>**  
3 Sided Angled Shield



**S241<sup>6</sup>**  
3 Sided Full Shield



**S242<sup>6</sup>**  
Four Sided Shield



## LUMINAIRE CHARACTERISTICS

### 1050 mA Drive Current

# of LED Modules	Drive Current	Color Temp	Delivered Lumens			System Wattage	L70 @ 25°C	Amperage Draw			
			TYPE 5N	TYPE 5M	TYPE 5W			120V	208V	240V	277V
1 Module	1050mA	Cool White (5000K)	11110	11825	11880	108	>50K	0.90A	0.52A	0.45A	0.39A
2 Module	1050mA	Cool White (5000K)	22220	23650	23760	216	>50K	1.80A	1.04A	0.90A	0.78A
4 Module	1050mA	Cool White (5000K)	44440	47300	47520	432	>50K	3.60A	2.08A	1.80A	1.56A
1 Module	1050mA	Neutral White (4000K)	10683	11370	11423	108	>50K	0.90A	0.52A	0.45A	0.39A
2 Module	1050mA	Neutral White (4000K)	21365	22740	22846	216	>50K	1.80A	1.04A	0.90A	0.78A
4 Module	1050mA	Neutral White (4000K)	42730	45480	45692	432	>50K	3.60A	2.08A	1.80A	1.56A

# LSMA-M Scimitar LED Flood Light

## EPA RATINGS (ft<sup>2</sup>)

### LSMA 1 & 2 (One & Two Module)

CATALOG NUMBER	DESCRIPTION	0°	20°	30°	45°	60°	70°	90°
TVA4/TVA5	Single Vertical Tenon	0.7	1.0	1.3	1.5	1.7	1.8	2.1
TV2	Two In-Line Tenons	2.2	3.0	3.4	3.9	4.2	4.4	5.1
TV3	Three In-Line Tenons	3.7	4.7	5.4	6.2	6.7	6.9	7.9
TV3120	Three Tenons at 120°	2.9	3.7	4.0	4.4	4.7	4.9	5.3
TV4	Four In-Line Tenons	5.1	6.5	7.4	8.4	9.1	9.4	10.8
TVC4	Four Tenons at 90°	3.7	4.5	5.0	5.5	5.8	6.0	6.7
BH2180	Two In-Line Tenons	1.7	2.5	2.9	3.4	3.7	3.9	4.6
BH3180	Three In-Line Tenons	2.7	3.7	4.4	5.2	5.7	5.9	6.9
BH3120	Three Tenons at 120°	2.5	3.2	3.6	4	4.3	4.4	4.8
BH4180	Four In-Line Tenons	3.7	5.2	6.1	7.1	7.7	8	9.5
BH490	Four Tenons at 90°	3.1	3.9	4.4	4.9	5.2	5.4	6.1

### LSMA 4 (Four Module)

CATALOG NUMBER	DESCRIPTION	0°	20°	30°	45°	60°	70°	90°
TVA4/TVA5	Single Vertical Tenon	1	1.3	1.7	2.1	2.4	2.5	3.1
TV2	Two In-Line Tenons	2.8	3.5	4.2	5.1	5.6	5.9	7.1
TV3	Three In-Line Tenons	4.6	5.6	6.6	7.9	8.8	9.2	10.9
TV3120	Three Tenons at 120°	3.4	4.5	5	5.8	6.4	6.6	7.3
TV4	Four In-Line Tenons	6.3	7.6	9	10.7	11.9	12.4	14.7
BH2180	Two In-Line Tenons	2.3	3	3.7	4.6	5.1	5.4	6.6
BH3180	Three In-Line Tenons	3.6	4.6	5.6	6.9	7.8	8.2	9.9
BH3120	Three Tenons at 120°	3	4.1	4.5	5.3	5.9	6.2	6.8
BH4180	Four In-Line Tenons	5	6.3	7.7	9.4	10.6	11.1	13.4
BH490	Four Tenons at 90°	3.7	5.1	5.8	6.6	7.2	7.5	8.6
BH490	Four Tenons at 90°	3.1	3.9	4.4	4.9	5.2	5.4	6.1



**WARNING:** Maintenance performed including the replacement of LED modules while power is still supplied to the luminaire may result in system failures and will void the warranty.



**TECHLIGHT**  
INNOVATION IN ILLUMINATION

2707 SATSUMA | DR. DALLAS, TX 75229 | PH: 800.225.0727 | EMAIL: techlight@techlight.com | www.techlight.com