



## R40 LED Retrofit Module

Catalog Number	
Project	Type

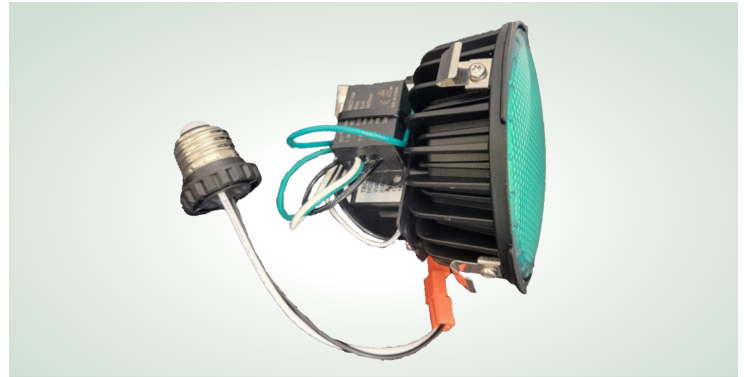
### FEATURES & SPECIFICATIONS

**APPLICATION** — The LUVM Series Module was conceived to replace the 175W R40 Clear Mercury Vapor utilized to create moonlight effects. The module can be retrofitted into existing R40 bullet fixtures, or it can be installed in new construction installations using several brands of Techlight R40 bullet housings. It's primary usage is for tree lighting applications where mounting height requires high lumen output.

**CONSTRUCTION** — The LUVM Module consists of a sealed IP68 rated LED Module with IP68 rated wireway gland. Die cast heat sink designed to accommodate up to 50W of LED heat. Tempered glass lens bonded using Dow Corning mil-spec RTV silicone adhesive sealant. The LUVM driver is isolated from the LED heat and is IP66 rated for ingress against water/dust.

**ELECTRICAL SYSTEM** — Using 195 2835 LED's to provide high lumens per watt power consumption > 124 lm/W with GR filter lens, LUVM module included NTC foldback circuit which monitors LED temperature on MCPCB and will reduce driver output current in the event of high LED thermals caused by ambient temperatures above 40.0 °C or in the event of debris accumulation on fixture lens. A 10Kv surge protection device is included in module.

**MOUNTING** — The LUVM module is retained in the R40 bullet housing by 4/ea stainless steel heat treated spring retainers. The module can be used in all major manufacturers' R40 sized bullet fixtures. It is optimized for Techlight R40 bullets.



SERIES	DIAMETER & WIDTH	NET WEIGHT
<b>LUVM</b>	5.4" x 3.2"	1.6 lbs

### ORDERING INFORMATION

Choose the bold face options for the appropriate luminaire configuration for your application and enter on the line above each attribute.

EXAMPLE:

**LUVM R40 32W GR 120-277 RETRO**

LUVM	OPTIC	WATTAGE	CCT	VOLTAGE	TYPE
	<b>R40</b>	<b>25W</b> = 25 Watt <b>32W</b> = 32 Watt	<b>GR</b> = Green <b>65K</b> = Clear White	<b>120-277</b> = Multi-Volt <sup>1</sup>	<b>RETRO</b> = Retrofit

### NOTES

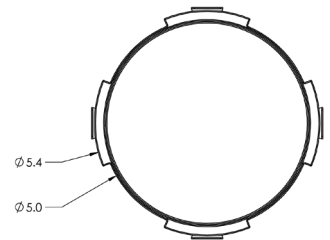
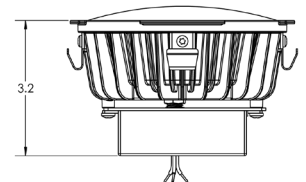
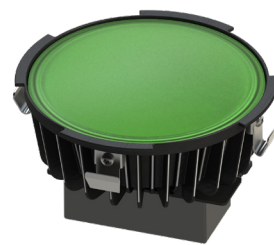
<sup>1</sup> = Multi-Volt is an auto ranging power supply from 120V to 277V

### TECHNICAL DATA

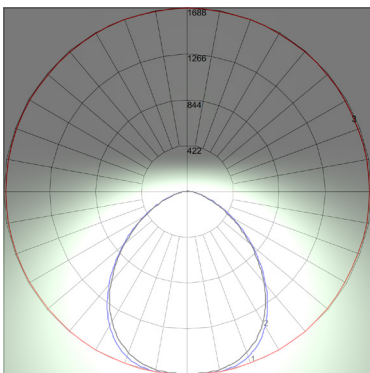
	Lumens		120V Amps	208V Amps	240V Amps	277V Amps
	GR - Green	65K - Clear White				
LUVM R40 32W*	3,952	5,812	0.27A	0.15A	0.13A	0.12A
LUVM R40 25W*	3,192	4,642	0.21A	0.12A	0.10A	0.09A

\* As independent/stand-alone module, or installed in typical R40 HID landscape bullet with no additional glare shields and no additional lens

### DIMENSIONS



### POLAR CURVE



Maximum Candels = 1688.05 Located At Horizontal Angle = 85, Vertical Angle = 9  
 # 1 - Vertical Plane Through Horizontal Angles (85 - 265) (Through Max. Cd.)  
 # 2 - Vertical Plane Through Horizontal Angles (0 - 180)  
 # 3 - Horizontal Cone Through Vertical Angle (9) (Through Max. Cd.)

### Simple Installation or Replacement with Medium Base Socket Adaptor

\* See separate Installation Instructions for complete details.



Installation Complete



Module Only

