

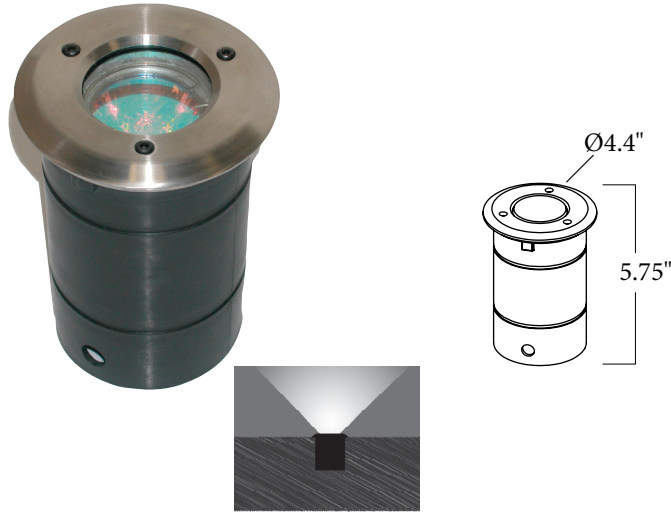
LVSS SERIES

Low Voltage Stainless Steel Well Light

ORDERING INFORMATION

MR16 STAINLESS STEEL WELL LIGHT

LVSSWL



DESIGN

The LVSSWL Well Light was designed as a low profile MR16 well light with a compact size that allows it to be mounted in any position, in nearly any application. It can stand up to the corrosive forces of water, soil, and time. The stainless steel finishing ring gives this fixture a sleek and modern look.

TECHNICAL INFORMATION

The fixture comes standard with a stainless steel housing and trim ring. It can be used with up to 35W 12V MR16 bi-pin base lamps. Comes with 3' of 18-2 low voltage wire and a low voltage connector. Single piece black ABS mounting sleeve comes standard.