



Catalog Number	
Project	Type

## Features & Specifications

### Construction

The housing is made of compression molded fiber reinforced polyester composite. The color impregnated SR2 composite will not flake or peel. Multiple ring/guard assemblies are available for a customizable trim finish.

### Optical System

Flood and spot reflectors are available for HID E17 lamps. The fixture can accommodate reflector shaped lamps for specific beam patterns. Convex and walk over lenses are both available.

### Electrical System

The fixture can be used with up to 75W Par30 Incandescent, 50W Mercury Vapor, 50W Metal Halide, 50W High Pressure Sodium, or 32W Compact Fluorescent lamp/ballast systems. All ballast trays are thermally protected and come pre-wired to specific line voltages via quick connects. Pre-installed 15' and 30' power cords are available from the factory.

### Mounting

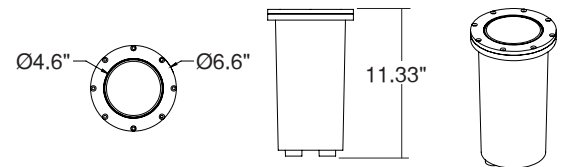
The TDB2W Well Light is an in-ground fixture and should be installed with back fill according to the Techlight TDB installation instructions. A 1/2" conduit entry is supplied into the anti-siphon chamber of the housing.

## TDB SERIES SMALL WELL LIGHT

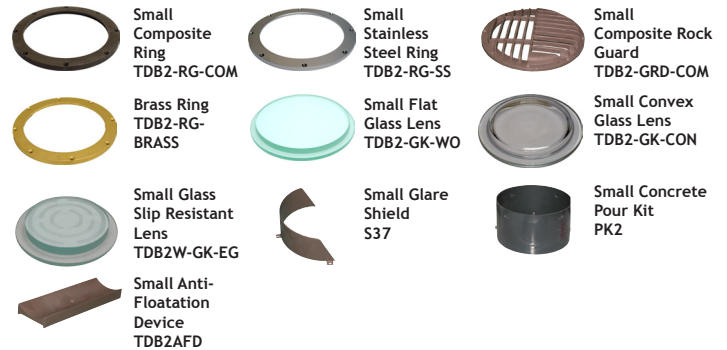


Shown with TDB2-RG-SS  
Stainless Steel Ring

### DIMENSIONS



### ACCESSORIES



Please contact your Techlight Sales Representative for more information.  
All dimensions subject to change without notice.

### Ordering Nomenclature

(Example: TDB2W, Brass Ring, 50W R20 Mercury Vapor, Wiring Harness, Convex Lens, 120V) = TDB2W-4-1-3-2-2-1-0

--	--	--	--	--	--	--	--	--

SERIES	RING/GUARD	BALLAST	OPTICS	LENS	LAMP	VOLTAGE	CORD
TDB2W Small Burial Light	1 - Composite Ring 2 - Composite Rock Guard 3 - Stainless Steel Ring 4 - Brass Ring	1 - 50W MV MT 2 - 50W MH MT 3 - 50W HPS MT 4 - 32W FL 120V 5 - 39W MH MT	1 - Flood Reflector 2 - Spot Reflector 3 - Wiring Harness	1 - Flat Lens 2 - Convex Lens 3 - Blue Convex Lens 4 - Slip Resistant Lens*  (*Slip Resistant lens is for use with the 32W Fluorescent light source only)	1 - MH50MED 2 - MV50R20MED 3 - MV50MED 4 - HPS50MED 5 - Q50PNF130 6 - Q50P30NS130 7 - Q75P30F130 8 - Q75P30NS130 9 - CFL32WPL (65K) 10 - CDM35WPAR20NFL 11 - CDM35PAR20SP	1 - 120V 2 - 208V 3 - 240V 4 - 277V	0 - None 1 - 15' 2 - 30'