



Catalog Number	
Project	Type

Features & Specifications

Construction

The housing is made of compression molded fiber reinforced polyester composite. The color impregnated SR2 composite will not flake or peel. Multiple ring/guard assemblies are available for a customizable trim finish.

Optical System

Flood and spot reflectors are available for HID E17 lamps. The fixture can accommodate reflector shaped lamps for specific beam patterns. Convex and walk over lenses are both available.

Electrical System

The fixture can be used with up to 175W E17 and Par38 Metal Halide lamp/ballast systems. All ballast trays are thermally protected and come pre-wired to specific line voltages via quick connects. Pre-installed 15' and 30' power cords are available from the factory.

Mounting

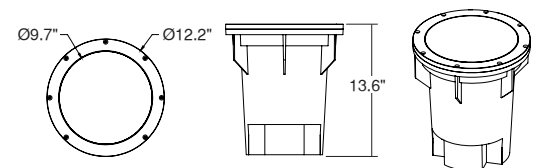
The TDB4W Well Light is an in-ground fixture and should be installed with back fill according to the Techlight TDB installation instructions. A 3/4" conduit entry is supplied into the anti-siphon chamber of the housing.

TDB SERIES LARGE WELL LIGHT

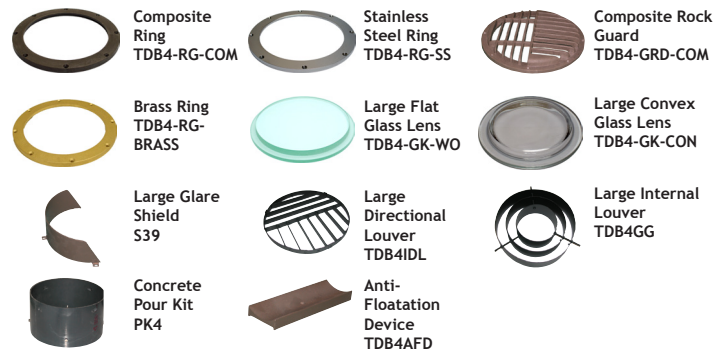


Shown with TDB4-RG-SS
Stainless Steel Ring

DIMENSIONS



ACCESSORIES



Please contact your Techlight Sales Representative for more information.
All dimensions subject to change without notice.

Ordering Nomenclature

(Example: TDB4W, Brass Ring, 70W Par38 Spot Metal Halide, Wiring Harness, Convex Lens, 120V) = TDB4W-4-1-4-2-4-1-0

--	--	--	--	--	--	--	--	--

SERIES	RING/GUARD	BALLAST	OPTICS	LENS	LAMP	VOLTAGE	CORD
TDB4W Large Burial Light	1 - Composite Ring 2 - Composite Rock Guard 3 - Stainless Steel Ring 4 - Brass Ring	1 - 70W MH MT 2 - 100W MH MT 3 - 150W MH MT 4 - 175W MH MT 5 - 75W MV MT 6 - 100W MV MT 7 - 175W MV MT 8 - 70W HPS MT 9 - 100W HPS MT 10 - 150W HPS MT 11 - 175W MH 480V 12 - 50W MH MT	1 - Flood Reflector 2 - Spot Reflector 3 - Wall Wash 4 - Wiring Harness	1 - Flat Lens 2 - Convex Lens	1 - MH70MED 2 - CMH70PAR38/FL25 3 - CMH70PAR38/WFL 4 - CMH70PAR38SP15 5 - MH70R40FLMED 7 - MH100MED 8 - CMH100PAR38FL25 9 - CMH100PAR38WFL 10 - CMH100PAR38SP15 12 - MH150MED 13 - MH175MED 16 - MV75MED 17 - MV100MED 18 - MV100PAR38MED 19 - MV100R40MED 20 - MV175MED 21 - MV175R40MED 22 - HPS70MED 23 - HPS100MED 24 - HPS150MED 25 - Q90P38F130 26 - Q90P38S130 27 - MV100R40CMED 28 - MV175R40CMED 30 - MH50MED	1 - 120V 2 - 208V 3 - 240V 4 - 277V	0 - None 1 - 15' 2 - 30'