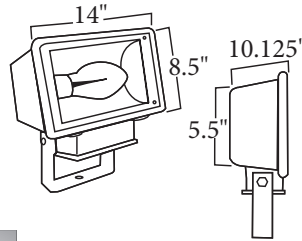


## LRF SERIES

### Large Rectangular Flood



## DESIGN

The LRF Flood Light is our most powerful compact Mercury Vapor light ideal for site, landscape, and general security lighting. Designed as a “power flood”, it can be used to accent large, wide tree canopies or cover large areas for security. A number of shielding options are available for customized effects.

## ACCESSORIES



2 3/8" OD TENON  
MOUNT ADAPTOR  
P4024D



BUTTON TYPE  
PHOTOCELL  
P1000PC



TREE MOUNT BASE  
B04



WALL MOUNT  
BRACKET  
LRFWB

## ORDERING INFORMATION

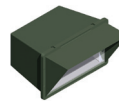
| Description  | Part Number  |
|--------------|--------------|
| 100W MV MT   | LRFB12A- (A) |
| 175W MV MT   | LRFB4A- (A)  |
| 175W MV 480V | LRFB4B- (A)  |
| 250W MV MT   | LRFB5A- (A)  |
| 250W MV 480V | LRFB5B- (A)  |

### Option Codes

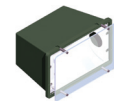
#### (A) Finish

BK - Black  
BZ - Bronze  
GR - OD Green  
USG- US Green  
WH - White  
SP - Special

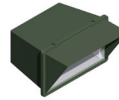
## SHIELDS



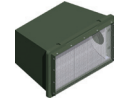
LRF VISOR SHIELD  
S15



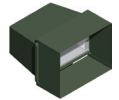
LRF VANDAL SHIELD  
S55



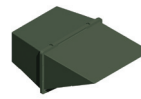
LRF BUG FREE VISOR  
SHIELD  
S16



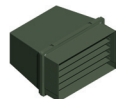
LRF WIRE GUARD  
S56



LRF 4 SIDED SHIELD  
S17



LRF LONG DOWN  
VISOR SHIELD  
S18



LRF LOUVERED SHIELD  
S96

## TECHNICAL INFORMATION

Constructed of die cast aluminum, it comes standard with a trunion mount and 4KV pulse rated mogul base socket. Light sources are available in 100W-250W Mercury Vapor. The fixture is finished with a durable polyester powdercoat paint.