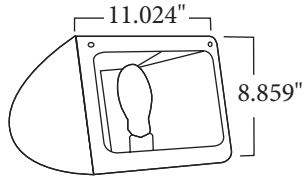


## RBF SERIES

### Round Back Flood



Fixture shown with 2AF slip fitter which is ordered separately.



### DESIGN

The RBF Flood Light is a compact Mercury Vapor light ideal for site, landscape, flag pole, and general security lighting. The sleek curve and contemporary look make them more aesthetically pleasing than regular commercial floods. A number of shielding options are available for customized effects.

### ACCESSORIES



TREE BASE  
B01



BRASS JUNCTION BOX  
TLSBBJB



2" ADJUSTABLE SLIP  
FITTER  
2AF



MOUNTING STAKE  
SMSB  
MMSB  
LMSB



2 3/8" OD TENON  
MOUNT ADAPTOR  
P4025D



BUTTON TYPE  
PHOTOCELL  
P1000PC

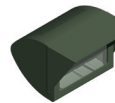
## ORDERING INFORMATION

Description	Part Number
100W MV MT	RBF1A- (A) - (B)
175W MV MT	RBF2A- (A) - (B)

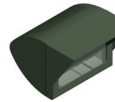
### Option Codes

(A) Beam Pattern	(B) Finish	(Fixture comes standard with 1/2" threaded knuckle. See accessories for additional mounting options.)
1 - Horizontal Flood	BK - Black	
2 - Vertical Flood	BZ - Bronze	
3 - Horizontal Spot	GR - OD Green	
	WH - White	
	SP - Special	

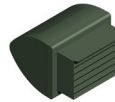
### SHIELDS



RBF VISOR SHIELD  
S77



RBF BUG FREE VISOR  
SHIELD  
S78



RBF LOUVERED SHIELD  
S79

### TECHNICAL INFORMATION

Constructed of die cast aluminum, it comes standard with a 1/2" threaded knuckle mount and 4KV pulse rated medium base socket. Light sources are available in 100W-175W Mercury Vapor. The fixture is finished with a durable polyester powdercoat paint.