



Catalog Number	
Project	Type

## FEATURES & SPECIFICATIONS

**APPLICATION** — The Cutlass Series of high output LED luminaires are designed for new outdoor parking area lighting and to be a replacement for HID area lights. They are optimal for lighting applications where long life, low maintenance, and consistent color rendering is required. The high efficient/lumen output allows the fixture to be used for parking, restaurant, quick service, shopping centers, or general area lighting applications.

**CONSTRUCTION** — The heavy-duty housing is constructed of cast aluminum with heat dissipating fins. The optical assemblies are sealed in place using a silicone gasket for weather tight protection. ETL listed for wet locations (IP65). Each fixture can accommodate advanced wireless control, management and reporting systems for outdoor lighting when ordered with the optional accessories (verify compatibility if using controls supplied by others) such as CTLARM mounting (required).

**FINISH** — A corrosion-resistant epoxy E-Coat layer that forms a uniform and all-encompassing protective barrier is applied to the fixtures prior to electrostatically applying a super durable powder coat finish. Standard colors available: Black, Bronze, US Green, White. Custom colors available upon request.

**OPTICAL SYSTEM** — Made with a state of the art UV stabilized acrylic high performance refractive optical assemblies that use high transmittance materials to achieve precise photometric distributions. Available in Type II, III, IV, Automotive Frontline Wide, IV Tennis, V Medium and V Wide beam configurations. Star Light Friendly (meets or exceeds Dark Sky requirements) in the horizontal position. Full Cutoff Luminaire.

**ELECTRICAL SYSTEM** — Available in up to 45,000 LED lumens in most optical distributions with either 5000K Cool White (+/- 500K), 4000K Neutral White or 3000K Warm White color temperatures. LED's rated for over 100,000 hours at 55°C ambient temperature. Available with 120-277V 50/60 Hz power supply. 480V and 347V input options. 0-10V dimming is standard. Built-in surge protection up to 10 kV. Built-in Active PFC Function LED driver conforms to UL8750 standards.

## ORDERING INFORMATION

Choose the bold face options for the appropriate luminaire configuration for your application and enter on the line above each fixture attribute. Accessories may be factory installed, depending on the particular accessory chosen, but still be ordered as a separate line item.

CTL							
SERIES	COLOR TEMP		NOMINAL LUMENS	OPTICS	VOLTAGE	FINISH	OPTIONS
	<b>C</b> = Cool White (5000K) <b>N</b> = Neutral White (4000K) <b>W</b> = Warm White (3000K)	2 Modules	<b>5L</b> = 5,000 Lumens <b>8L</b> = 8,000 Lumens <b>10L</b> = 10,000 Lumens <b>12L</b> = 12,000 Lumens <b>15L</b> = 15,000 Lumens <b>20L</b> = 20,000 Lumens	<b>T2</b> = Type II <b>T3</b> = Type III <b>T4</b> = Type IV <b>FAW</b> = Frontline Auto Wide <b>T4T</b> = Type IV Tennis <b>T5M</b> = Type V Medium <b>T5W</b> = Type V Wide	<b>1</b> = Multi-Volt <sup>1</sup> <b>2</b> = 347-480V(HV)	<b>BZ</b> = Bronze <b>BK</b> = Black <b>GR</b> = US Green <b>WH</b> = White <b>SP</b> = Special <sup>2</sup>	<b>PCR7</b> <sup>3</sup> = 7 Pin Twist-Lock Photocell Receptacle ANSI C136.41 & Receptacle Shorting Cap <b>CTL2AF</b> <sup>6,7</sup> = 2-3/8" ID Adjustable Slip Fitter <b>HOEB</b> <sup>9</sup> = LED Battery Pack, 90 mins  <b>CTL ARM IMS</b> <sup>10</sup> = Arm with Integrated PIR Motion Sensor For Square Pole <b>CTL ARM R IMS</b> <sup>10</sup> = Arm with Integrated PIR Motion Sensor For Round Pole <i>(IMS Lenses Below, Ordered As A Separate Line Item)</i> <b>TLWSFSP-L2</b> <sup>11</sup> = 360° lens, maximum coverage: 48ft diameter from 8ft height <b>TLWSFSP-L3</b> <sup>11</sup> = 360° lens, maximum coverage: 40ft diameter from 20ft height <b>TLWSFSP-L7</b> <sup>11</sup> = 360° lens, maximum coverage: 100ft diameter from 40ft height  <b>CTL ARM IMSBTM</b> <sup>12</sup> = Arm for Square Pole with Network Wireless PIR & Daylight Harvesting Sensor <b>CTL ARM R IMSBTM</b> <sup>12</sup> = Arm for Round Pole with Network Wireless PIR & Daylight Harvesting Sensor <i>(IMSBTM Lenses Below, Ordered As A Separate Line Item)</i> <b>WHBL1</b> = 360° PIR lens, maximum coverage 80' dia. from 40' height
		4 Modules	<b>25L</b> = 25,000 Lumens <b>30L</b> = 30,000 Lumens <b>35L</b> = 35,000 Lumens <b>40L</b> = 40,000 Lumens <b>45L</b> <sup>8</sup> = 45,000 Lumens				

FIXTURE WEIGHTS (APPROX)		
Fixture Configuration	2 Module	4 Module
Weight (lbs)	<b>14 lbs</b>	<b>20 lbs</b>

## ACCESSORIES (Order as separate line items. Specify finish for accessories.)

- PC2** 480V Twist-Lock Photocell
  - PC7** Multi-Tap (105-285V) Twist-Lock Photocell
  - CTL5M**<sup>3,6</sup> Slide Mount Adaptor
  - CTLB15**<sup>7</sup> Adjustable Yoke Mount with Slide Adaptor
  - CTL ARM**<sup>8</sup> Decorative Arm Mount (0.3 EPA, 3.5 lbs)
  - CTL ARM R**<sup>8</sup> Decorative Arm Mount for Round Poles (0.3 EPA, 3.7 lbs)
  - S215**<sup>8</sup> Angled Back Light Shield
  - CTLHT238** Horizontal 2-3/8" ID Tenon Mount
  - VBWM** Wall Mount Adaptor
  - TLWSFIR-100** Remote Handheld Configurator Tool for IMS Sensors
- MOUNTING OPTIONS** See page 3



# CTL SERIES

## High Lumen Output Cutlass LED Area Light



Picture shows:  
CTL 45L w/ CTLARM

SERIES	HOUSING HEIGHT	LENGTH & WIDTH	EPA (FT <sup>2</sup> )
<b>CTL</b>	4.44"	17.25" x 12.00"	See Chart

**MOUNTING** — Proprietary slide-on mounting system allows for quick installation. The CTL can be ordered with an aesthetically pleasing arm mount (CTLARM – required for integrating dynamic control systems), a 2-3/8" ID Adjustable Slip Fitter (CTL2AF) for mounting on a standard 2-3/8" OD tenon and an entire complement of pole brackets with integrated quick mount technology. CTLSM for direct mounting to poles in single(1 @ 90°) or D180 (2 @ 180°).

**LISTINGS** — Complies with UL8750. ETL listed for wet locations. Meets US and Canadian safety standards. -40°C to 50°C ambient operation. RoHS Compliant.

**WARRANTY** — The complete luminaire is covered by a 5-year limited warranty.

### EXAMPLE:

**CTL C 45L T5M 1 BZ**

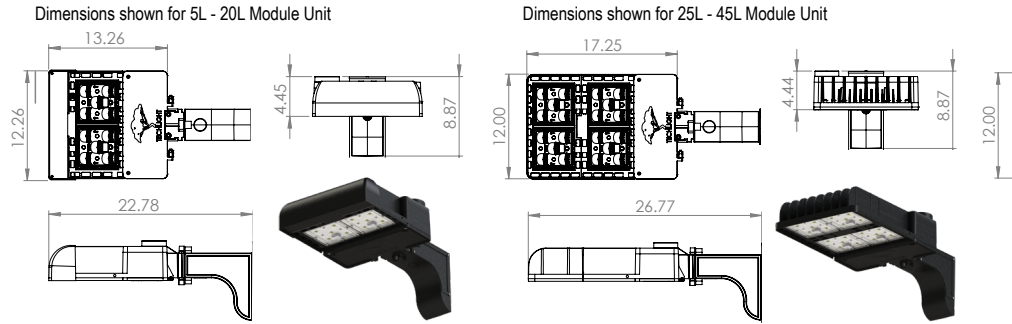
## NOTES

- <sup>1</sup> = Multi-Volt is an auto ranging power supply from 100V to 300V input.
- <sup>2</sup> = Custom RAL color matching is available. Contact your sales representative for additional info.
- <sup>3</sup> = Slide mount adaptor for direct pole mounts cannot be used when mounting fixtures at 90° increments.
- <sup>4</sup> = Requires one S215 for 5L-20L units; two S215 for 25L-45L units.
- <sup>5</sup> = PCR7 photocell receptacle must be oriented in the field so that the light sensor on the control is facing North. When used with the CTL2AF, the fixture must be in a downward facing position (<90° tilt). Use of the PCR7 with a fixture in an upward facing position will void warranty.
- <sup>6</sup> = Accessory mounting device must be ordered for each outlass luminaire to provide mounting means.
- <sup>7</sup> = Do not tilt the CTL more than 75 degrees upward from horizontal when using the CTL2AF & CTLB15.
- <sup>8</sup> = Only available in certain optics and wattages. See LUMINAIRE CHARACTERISTICS chart for details.
- <sup>9</sup> = Only available in 5L, 8L, 10L, 12L and 15L.
- <sup>10</sup> = TLWSFSP-L2, L3, or L7 Lens must be ordered along with Arms with Integrated PIR Motion Sensors.
- <sup>11</sup> = Photo control shield available upon request. Lens must be ordered with IMS option.
- <sup>12</sup> = WHBL1 Lens must be ordered along with Arms with Integrated PIR Motion Sensors.
- <sup>13</sup> = See pg. 3 for specific CTLTH configurations and TH spec sheet for specifications.

# CTL High Lumen Output Cutlass LED Area Light

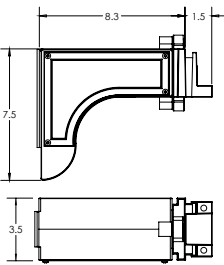
## AVAILABLE FIXTURE DIMENSIONS

Dimensions shown are for fixture bodies only. Mounting options must be ordered separately. Fixture shown with arm sold separately.

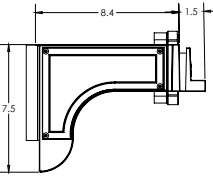


## FIXTURE & MOUNTING ACCESSORIES

**CTLARM<sup>5</sup> (FOR SQUARE POLE)**  
Decorative Arm Mount (0.3 EPA, 3.5 lbs.) with Slide Mount Adapter



**CTLARM<sup>R</sup> (FOR ROUND POLE)**  
Decorative Arm Mount (0.3 EPA, 3.5 lbs.) with Slide Mount Adapter



**PC2**  
480V Twist-Lock Photocell



**PC7**  
Multi-Tap (105-285V) Twist-Lock Photocell



**PCR7<sup>5</sup>**  
7-Pin Twist-Lock Photocell Receptacle ANSI C136.41 and Receptacle Shorting Cap



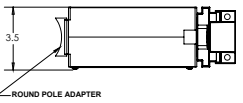
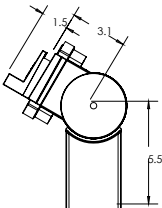
**S215<sup>4</sup>**  
Angled Back Light Shield



**IMSBTM**  
AC Powered Internal Network Wireless PIR & Daylight Harvesting Sensor



**CTL2AF<sup>7</sup>**  
2-3/8" ID Adjustable Slip Fitter with Slide Mount Adapter



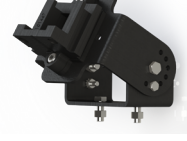
**VBWM**  
Wall Mount Adaptor



**CTL5M<sup>3-6</sup>**  
Slide Mount Adaptor for square pole mount only



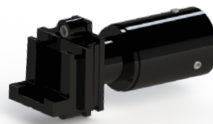
**CTLB15<sup>7</sup>**  
Adjustable Yoke Mount with Slide Adaptor



**WHBL1**  
360° PIR lens, maximum coverage 80" dia. from 40' height



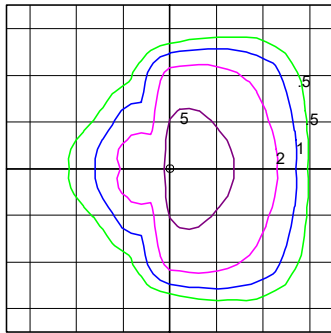
**CTLHT238**  
Horizontal 2-3/8" OD Tenon Mount w/Slide Mount Adaptor



## PHOTOMETRICS

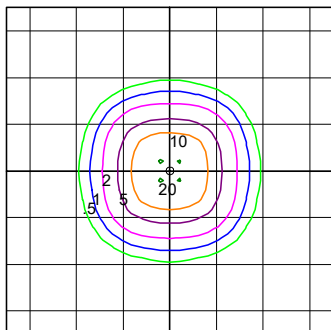
**IES INDOOR REPORT PHOTOMETRIC FILE**

**Typical Type III photometric optical distribution**



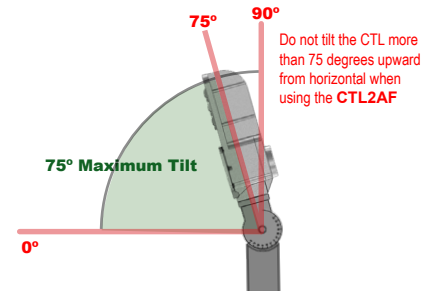
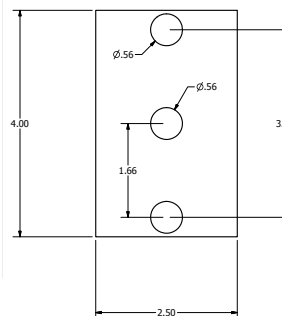
**IES INDOOR REPORT PHOTOMETRIC FILE**

**Typical Type 5M photometric optical distribution**



## DRILL TEMPLATE

CTL - Not to Scale



**TECHLIGHT**  
INNOVATION IN ILLUMINATION

2707 SATSUMA DR. | DALLAS, TX 75229 | PH: 800.225.0727 | www.techlight.com

# CTL High Lumen Output Cutlass LED Area Light

## EPA RATINGS (ft<sup>2</sup>)

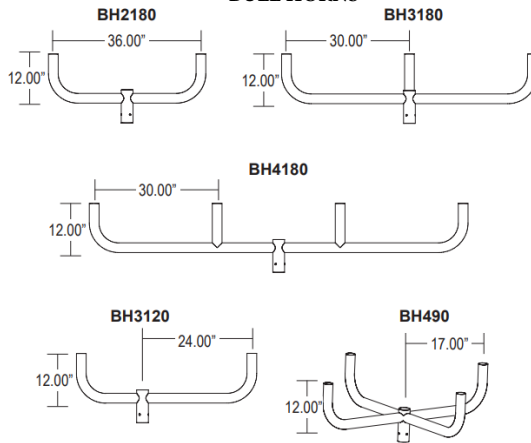
	Angle <sup>7</sup>	FRONT	SIDE	EPA at 60	TVAX	TV2	TV3	TV3120	TV4	TVC4	BH2180	BH3180	BH3120	BH4180	BH490	TVAXR	RV2	RV3	RV3120	RV4	RVC4
CUTLASS 2 MODULE	0	0.38	0.44	0.44	0.5	1.9	3.1	2.3	4.3	3	1.4	2.1	1.8	3	2.3	0.5	1.3	2.1	1.7	2.9	2.2
	20	0.63	0.44	0.6	0.7	2.2	3.7	2.8	5.1	3.4	1.7	2.7	2.4	3.7	2.8	0.7	1.7	2.7	2.3	3.6	2.7
	30	0.76	0.44	0.66	0.8	2.5	4.1	3.1	5.6	3.7	2	3.1	2.6	4.3	3.1	0.8	2	3.1	2.5	4.2	3
	45	0.94	0.44	0.75	1	2.9	4.6	3.5	6.3	4.1	2.4	3.6	3	5	3.5	1	2.3	3.6	2.9	4.9	3.3
CUTLASS 4 MODULE	0	0.38	0.57	0.54	0.6	2.1	3.5	2.5	4.9	3.2	1.6	2.5	2	3.5	2.6	0.6	1.6	2.5	1.9	3.4	2.5
	20	0.75	0.57	0.75	0.8	2.5	4	3.3	5.6	4	2	3	2.8	4.2	3.4	0.8	1.9	3	2.7	4.1	3.2
	30	0.95	0.57	0.85	1	2.9	4.6	3.7	6.4	4.3	2.4	3.6	3.2	5	3.7	1	2.3	3.6	3.1	4.9	3.6
	45	1.19	0.57	0.97	1.2	3.4	5.4	4.1	7.3	4.8	2.9	4.4	3.7	6	4.2	1.2	2.8	4.3	3.6	5.9	4.1

7 = Do not tilt the CTL more than 45 degrees upward from horizontal when using the CTL2AF & CTLB15

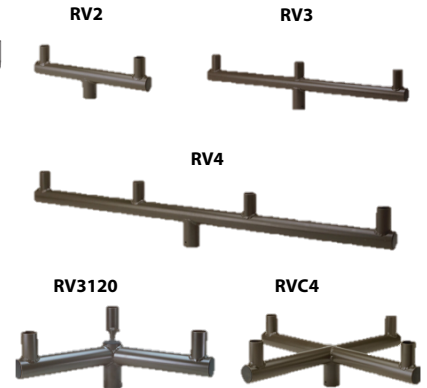
### SQUARE STRAIGHT BULL HORNS



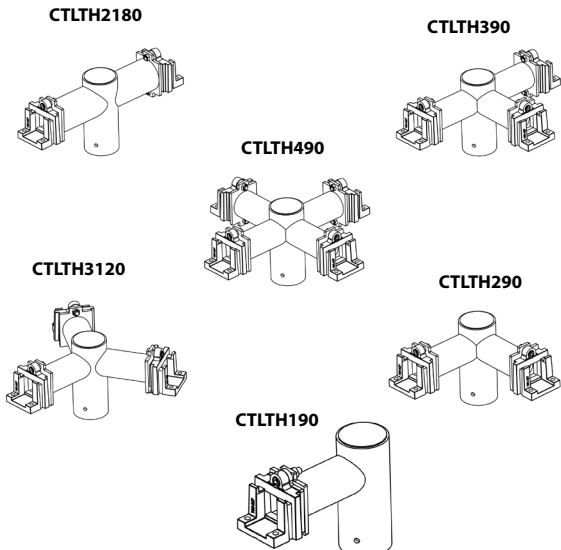
### ROUND CURVED BULL HORNS



### ROUND STRAIGHT BULL HORNS



### HORIZONTAL TENON ADAPTORS w/Slide Mount Adaptor



### ARM MOUNT

Fixture Configuration	2 Module EPA's <sup>10</sup>	4 Module EPA's <sup>10</sup>
	CTLARM	
1 @ 90°	0.8	0.9
2 @ 180°	1.5	1.7
2 @ 90°	1.4	1.5
3 @ 90°	2.1	2.3
4 @ 90° or 4 @ 70°	2.2	2.5

<sup>10</sup> EPA's shown include both the fixture and the mounting apparatus.



**TECHLIGHT**  
INNOVATION IN ILLUMINATION

2707 SATSUMA DR. | DALLAS, TX 75229 | PH: 800.225.0727 | www.techlight.com

# CTL High Lumen Output Cutlass LED Area Light

## FIXTURE MOUNT SENSOR (IMS)

### FEATURES & SPECIFICATIONS

**APPLICATION** — The sensor is ideal for areas such as parking facilities, gas stations, pedestrian pathways, and warehouses. A choice of four lenses ensures complete coverage for mounting heights up to 40'.

**OPERATION** — Typically, the sensor ramps lighting On to the selected High mode level when motion is detected and the ambient light level is below the hold off setpoint. After the sensor stops detecting movement and the time delay elapses, lights fade to the Low mode level. If there is no motion during the subsequent cut off time delay, the lights will turn Off. For dusk to dawn control, the integral photocell can switch the lights On and Off based on the ambient light level so that lighting remains on overnight even without motion detection.

#### FEATURES —

- Provides line voltage On/Off switching
- High and low modes fully adjustable from 0 to 10V
- Time delay from 5 to 30 minutes
- Optional cut off delay
- Adjustable ramp up and fade down times
- Optional daylighting setpoints feature automatic calibration, or permit manual adjustment
- Polycarbonate construction; flame retardant, UV resistant, impact resistant, recyclable
- UL244A and UL508

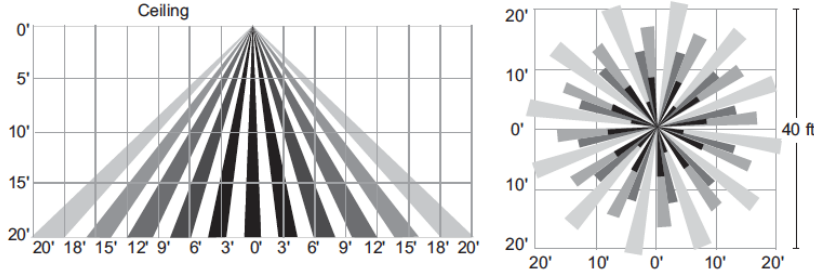
**TLWSFSIR-100**  
Remote Handheld Sensor  
Configuration Tool



## SENSOR LENSES FIELD OF VIEW

### TLWSFSP-L3<sup>12</sup>

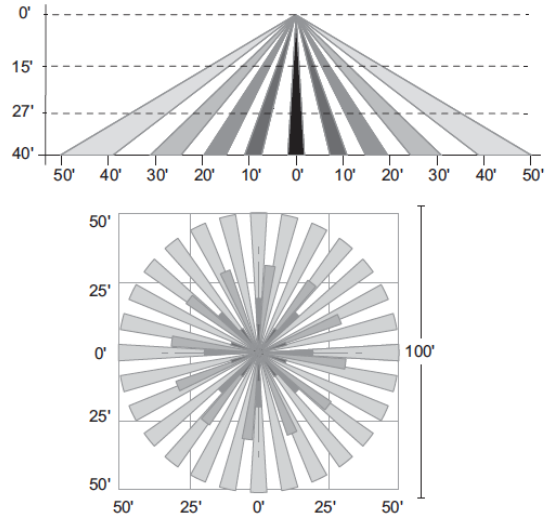
360° lens, maximum coverage 40' diameter from 20' height



<sup>12</sup> = Black lens cover and Photo control shield available upon request.  
Len's must be ordered with IMS option.

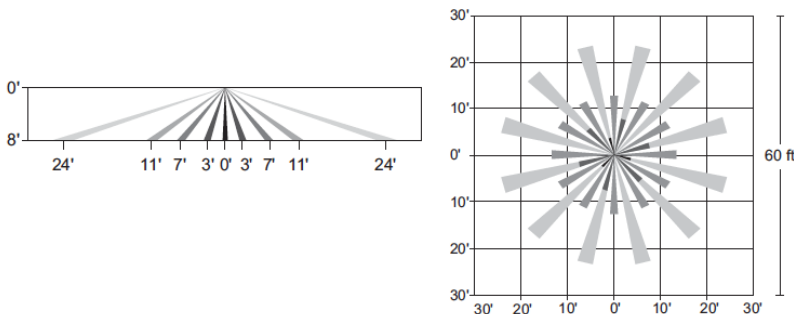
### TLWSFSP-L7<sup>12</sup>

360° lens, maximum coverage 100' diameter from 40' height



### TLWSFSP-L2<sup>12</sup>

360° lens, maximum coverage 48' diameter from 8' height



# CTL High Lumen Output Cutlass LED Area Light

## Integral Motion Sensor Blue Tooth Module (IMSBTM)

**APPLICATION** — The IMSBTM is an AC-powered, Integral Motion Sensor Blue Tooth Module, that is highly versatile for various indoor and outdoor lighting fixtures. It provides **360° coverage**, making it optimal for open spaces and aislesways. This sensor is particularly suitable for environments such as parking lots, fuel stations, walkways, and storage facilities. The WHBL1 lens is crafted for fixtures at mounting heights ranging from **20 to 40 feet**, ensuring a coverage span of up to **80 feet in diameter** at the maximum height of **40 feet**. These lenses are designed with multiple cells and tiers, creating a dense pattern of coverage.

- Analog Sensor Built-in
- Replaceable lens options
- 120-277V Line Voltage input
- Daylight harvesting available

**OPERATION** — Typically, the sensor ramps lighting On to the selected High mode level when motion is detected and the ambient light level is below the hold off setpoint. After the sensor stops detecting movement and the time delay elapses, lights fade to the Low mode level. If there is no motion during the subsequent cut off time delay, the lights will turn Off. For dusk to dawn control, the integral photocell can switch the lights On and Off based on the ambient light level so that lighting remains on overnight even without motion detection.

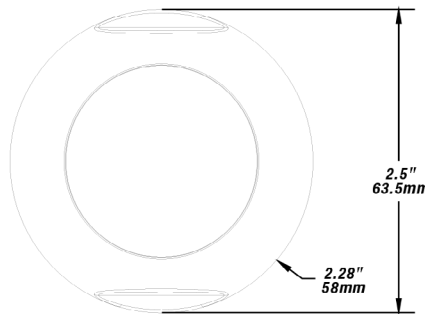
### ADDITIONAL FEATURES

- **Wireless Control System:** Bluetooth® Low Energy Mesh 4.2 & 5.0 protocols. Enables individual or group control of luminaires.
- **Mobile App Operation:** Intuitive interface for easy management.
- **Flexible Commissioning:** Components commissioned via the Mobile App. No need for a gateway during commissioning.
- **Sensor Integration:** Works seamlessly with various sensors. Enhances energy efficiency and responsive lighting.
- **Mesh Network Range:** Wireless communication up to 100 feet or more between devices. Ideal for diverse spatial configurations.
- **Internet Independence:** Commissioning and operation without internet access. Ensures functionality in various environments.
- **Security Measures:** Data encryption for mesh network security. Device access restricted without encrypted QR codes.
- **UL 1376 Verification:** LiteTrace, the manufacturer, has UL 1376 verification. Ensures adherence to stringent security standards.
- **In-House R&D Capabilities:** Full-stack, in-house R&D for networked sensors and controllers. Reflects a high level of control and innovation.
- **Industry Recognition:** One of the first systems listed to DLC's Networked Lighting Controls (NLC5). Compliance with industry standards and specifications.

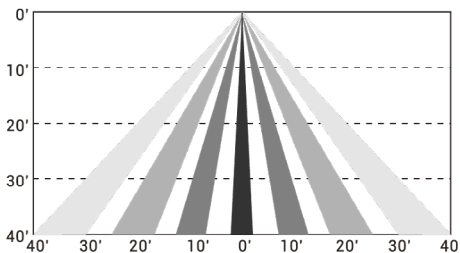


## SENSOR LENS FIELD OF VIEW AND DIMENSIONS

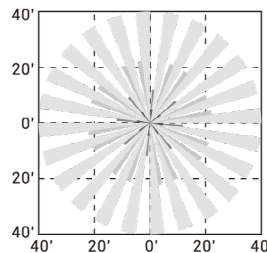
### WHBL1



Coverage Side View

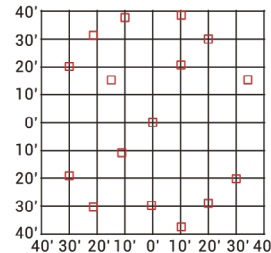


Coverage Top View



Height 40ft

Detecting Spots For Ref



### Network Lighting Control App Instruction Manual

located on the Techlight Website -> Resources Page.  
Location shown below, **or** scan the QR code to the right.  
<https://techlight.com/pdf/KeiltonManual.pdf>





## LUMINAIRE CHARACTERISTICS

System Wattage	L70 @ 55°C	Amperage Draw					
		120V	208V	240V	277V	347V	480V
35	>100K	0.29	0.17	0.14	0.13	0.10	0.07
47	>100K	0.39	0.22	0.19	0.17	0.13	0.10
53	>100K	0.44	0.25	0.22	0.19	0.15	0.11
59	>100K	0.49	0.28	0.25	0.21	0.17	0.12
65	>100K	0.54	0.31	0.27	0.24	0.19	0.14
71	>100K	0.60	0.34	0.30	0.26	0.21	0.15
78	>100K	0.65	0.37	0.32	0.28	0.22	0.16
79	>100K	0.66	0.38	0.33	0.28	0.23	0.16
83	>100K	0.70	0.40	0.35	0.30	0.24	0.17
88	>100K	0.73	0.42	0.37	0.32	0.25	0.18
92	>100K	0.77	0.44	0.39	0.33	0.27	0.19
97	>100K	0.81	0.47	0.40	0.35	0.28	0.20
102	>100K	0.85	0.49	0.42	0.37	0.29	0.21
106	>100K	0.88	0.51	0.44	0.38	0.31	0.22
111	>100K	0.92	0.53	0.46	0.40	0.32	0.23
129	>100K	1.08	0.62	0.54	0.47	0.37	0.27
134	>100K	1.11	0.64	0.56	0.48	0.39	0.28
138	>100K	1.15	0.66	0.58	0.50	0.40	0.29
143	>100K	1.19	0.69	0.6	0.52	0.41	0.30
147	>100K	1.23	0.71	0.61	0.53	0.42	0.31
149	>100K	1.24	0.72	0.62	0.54	0.43	0.31
157	>100K	1.31	0.75	0.65	0.57	0.45	0.33
158	>100K	1.32	0.76	0.66	0.57	0.45	0.33
167	>100K	1.39	0.80	0.70	0.60	0.48	0.35
176	>100K	1.47	0.85	0.73	0.64	0.51	0.37
185	>100K	1.54	0.89	0.77	0.67	0.53	0.39
194	>100K	1.62	0.93	0.81	0.70	0.56	0.40
203	>100K	1.69	0.98	0.85	0.73	0.59	0.42
212	>100K	1.77	1.02	0.88	0.77	0.61	0.44
221	>100K	1.85	1.06	0.92	0.8	0.64	0.46
231	>100K	1.92	1.11	0.96	0.83	0.66	0.48
240	>100K	2.00	1.15	1.00	0.87	0.69	0.50
249	>100K	2.07	1.20	1.04	0.90	0.72	0.52
258	>100K	2.15	1.24	1.08	0.93	0.74	0.54
267	>100K	2.23	1.29	1.11	0.97	0.77	0.56
277	>100K	2.30	1.33	1.15	1.00	0.80	0.58
286	>100K	2.38	1.37	1.19	1.03	0.82	0.60
295	>100K	2.46	1.42	1.23	1.06	0.85	0.61
304	>100K	2.53	1.46	1.27	1.10	0.88	0.63
305	>100K	2.54	1.47	1.27	1.10	0.88	0.63
313	>100K	2.61	1.51	1.31	1.13	0.90	0.65
318	>100K	2.65	1.53	1.33	1.15	0.92	0.66
322	>100K	2.69	1.55	1.34	1.16	0.93	0.67



# CTL High Lumen Output Cutlass LED Area Light

## LUMINAIRE CHARACTERISTICS

### Cool White (5000K)

Angled Back Light Shield	Output ID	Nominal Lumens	TYPE FAW			TYPE II			TYPE III			TYPE IV			TYPE 4T			TYPE 5M			TYPE 5W		
			System Lumens	System Watts	Lm/W	System Lumens	System Watts	Lm/W	System Lumens	System Watts	Lm/W	System Lumens	System Watts	Lm/W	System Lumens	System Watts	Lm/W	System Lumen	System Watts	Lm/W	System Lumens	System Watts	Lm/W
			BUG Rating			BUG Rating			BUG Rating			BUG Rating			BUG Rating			BUG Rating			BUG Rating		
Requires one S215 for 5L - 20L Units	5L	5,000	5012	35	145	5525	35	160	5126	35	148	5557	35	160	5723	35	165	5663	35	164	5702	35	165
	Bug Rating		B1-U0-G1			B1-U0-G1			B1-U0-G1			B2-U0-G2			B2-U0-G1			B2-U0-G0			B3-U0-G1		
	8L	8,000	8206	59	139	8200	53	155	8392	59	142	8247	53	156	8495	53	161	8405	53	159	8463	53	160
	Bug Rating		B2-U0-G2			B2-U0-G2			B2-U0-G2			B2-U0-G2			B2-U0-G1			B3-U0-G0			B3-U0-G2		
	10L	10,000	10393	78	134	9864	65	151	9912	71	139	9920	65	152	10218	65	157	10110	65	155	10179	65	156
	Bug Rating		B2-U0-G2			B2-U0-G2			B2-U0-G2			B2-U0-G2			B3-U0-G1			B3-U0-G0			B4-U0-G2		
	12L	12,000	11808	83	142	11455	78	147	11753	79	149	11521	78	148	11867	78	153	11742	78	151	11822	78	152
Bug Rating		B2-U0-G2			B2-U0-G2			B2-U0-G2			B3-U0-G3			B3-U0-G1			B3-U0-G0			B4-U0-G2			
Requires two S215 for 25L - 40L Units	15L	15,000	15084	111	136	15177	97	156	15265	106	144	15216	97	157	15207	92	164	15045	92	163	15017	92	162
	Bug Rating		B3-U0-G3			B3-U0-G3			B3-U0-G3			B3-U0-G3			B3-U0-G1			B3-U0-G1			B4-U0-G2		
	20L	20,000	20096	157	128	19837	134	148	20082	147	136	19888	134	149	20146	129	156	19931	129	154	19894	129	154
	Bug Rating		B3-U0-G3			B3-U0-G3			B3-U0-G3			B3-U0-G3			B3-U0-G2			B4-U0-G1			B5-U0-G3		
	25L	25,000	24813	176	141	25139	158	159	24761	167	148	25204	158	160	24913	149	167	24647	149	166	24601	149	165
	Bug Rating		B3-U0-G3			B3-U0-G3			B3-U0-G4			B3-U0-G4			B4-U0-G2			B4-U0-G1			B5-U0-G3		
	30L	30,000	30167	221	136	30354	194	156	29456	203	145	30432	194	157	30415	185	164	30090	185	163	30034	185	162
Bug Rating		B3-U0-G3			B3-U0-G3			B3-U0-G4			B3-U0-G4			B4-U0-G2			B5-U0-G1			B5-U0-G4			
35L	35,000	35380	267	132	35005	231	152	34967	249	140	35095	231	152	35370	221	160	34992	221	158	34928	221	158	
Bug Rating		B3-U0-G4			B4-U0-G4			B3-U0-G4			B3-U0-G4			B4-U0-G2			B5-U0-G1			B5-U0-G4			
40L	40,000	40193	313	128	39674	267	148	40164	295	136	39777	267	149	40292	258	156	39861	258	154	39788	258	154	
Bug Rating		B3-U0-G4			B4-U0-G4			B4-U0-G5			B4-U0-G5			B4-U0-G2			B5-U0-G1			B5-U0-G4			
Requires 2 x S215	45L	45,000	N/A			45070	313	144	43211	322	134	45187	313	144	44913	295	152	45547	304	150	45463	304	150
	Bug Rating					B4-U0-G4			B4-U0-G5			B4-U0-G5			B4-U0-G2			B5-U0-G2			B5-U0-G5		
	Angled Back Light Shield					2 x S215			2 x S215			2 x S215			2 x S215			2 x S215			2 x S215		



# CTL High Lumen Output Cutlass LED Area Light

## LUMINAIRE CHARACTERISTICS

### Neutral White (4000K)

Angled Back Light Shield	Output ID	Nominal Lumens	TYPE IAW			TYPE II			TYPE III			TYPE IV			TYPE 4T			TYPE 5M			TYPE 5W			
			System Lumens	System Watts	Lm/W	System Lumens	System Watts	Lm/W	System Lumens	System Watts	Lm/W	System Lumens	System Watts	Lm/W	System Lumens	System Watts	Lm/W	System Lumen	System Watts	Lm/W	System Lumens	System Watts	Lm/W	
			BUG Rating			BUG Rating			BUG Rating			BUG Rating			BUG Rating			BUG Rating			BUG Rating			
Requires one S215 for 5L - 20L Units	5L	5,000	5136	35	148	5661	35	163	5253	35	152	5694	35	164	5865	35	169	5803	35	168	5843	35	169	
	Bug Rating		B1-U0-G1			B1-U0-G1			B1-U0-G1			B2-U0-G2			B2-U0-G1			B2-U0-G0			B3-U0-G1			
	8L	8,000	8409	59	142	8402	53	159	7796	53	147	8451	53	160	7808	47	167	7726	47	165	7778	47	166	
	Bug Rating		B2-U0-G2			B2-U0-G2			B2-U0-G2			B2-U0-G2			B2-U0-G1			B3-U0-G0			B3-U0-G2			
	10L	10,000	9931	71	139	10107	65	155	10156	71	142	10165	65	156	10470	65	160	10360	65	159	10431	65	160	
	Bug Rating		B2-U0-G2			B2-U0-G2			B2-U0-G2			B2-U0-G2			B3-U0-G1			B3-U0-G0			B4-U0-G2			
	12L	12,000	11745	83	141	11738	78	151	12315	83	148	11805	78	152	12160	78	156	12032	78	155	12114	78	156	
Bug Rating		B2-U0-G2			B2-U0-G2			B3-U0-G3			B3-U0-G3			B3-U0-G1			B3-U0-G0			B4-U0-G2				
Requires one S215 for 5L - 20L Units	15L	15,000	15003	111	136	15096	97	156	15184	106	143	15135	97	156	15126	92	164	14965	92	162	14937	92	161	
	Bug Rating		B2-U0-G3			B3-U0-G3			B3-U0-G3			B3-U0-G3			B3-U0-G1			B3-U0-G1			B4-U0-G2			
	20L	20,000	19989	157	128	20280	138	147	19975	147	135	19783	134	148	20039	129	155	19824	129	154	19788	129	153	
	Bug Rating		B3-U0-G3			B3-U0-G3			B3-U0-G3			B3-U0-G3			B3-U0-G2			B4-U0-G1			B5-U0-G3			
	Requires two S215 for 25L - 40L Units	25L	25,000	24681	176	140	25005	158	158	24629	167	148	25070	158	159	24780	149	166	24516	149	165	24470	149	164
		Bug Rating		B3-U0-G3			B3-U0-G3			B3-U0-G4			B3-U0-G4			B4-U0-G2			B4-U0-G1			B5-U0-G3		
		30L	30,000	30007	221	136	30192	194	156	30368	212	143	30270	194	156	30253	185	164	29930	185	162	29874	185	161
Bug Rating		B3-U0-G3			B3-U0-G3			B4-U0-G4			B4-U0-G4			B4-U0-G2			B5-U0-G1			B5-U0-G4				
Requires two S215 for 25L - 40L Units	35L	35,000	35192	267	132	34818	231	151	34781	249	140	34908	231	151	35182	221	159	34806	221	157	34742	221	157	
	Bug Rating		B3-U0-G4			B4-U0-G4			B4-U0-G4			B4-U0-G4			B4-U0-G2			B5-U0-G1			B5-U0-G4			
Requires two S215 for 25L - 40L Units	40L	40,000	39979	313	128	39463	267	148	39950	295	135	39565	267	148	40077	258	155	39649	258	154	39576	258	153	
	Bug Rating		B4-U0-G4			B4-U0-G4			B4-U0-G5			B4-U0-G5			B4-U0-G2			B5-U0-G1			B5-U0-G4			
Requires 2 x S215	45L	45,000	N/A			45070	313	144	42883	322	133	45187	313	144	44913	295	152	45547	304	150	45463	304	150	
	Bug Rating					B4-U0-G4			B4-U0-G5			B4-U0-G5			B4-U0-G2			B5-U0-G2			B5-U0-G5			
	Angled Back Light Shield					2 x S215			2 x S215			2 x S215			2 x S215			2 x S215			2 x S215			





# CTL High Lumen Output Cutlass LED Area Light

## LUMINAIRE CHARACTERISTICS

### Warm White (3000K)

Angled Back Light Shield	Output ID	Nominal Lumens	TYPE IAW			TYPE II			TYPE III			TYPE IV			TYPE 4T			TYPE 5M			TYPE 5W		
			System Lumens	System Watts	Lm/W	System Lumens	System Watts	Lm/W	System Lumens	System Watts	Lm/W	System Lumens	System Watts	Lm/W	System Lumens	System Watts	Lm/W	System Lumen	System Watts	Lm/W	System Lumens	System Watts	Lm/W
			BUG Rating			BUG Rating			BUG Rating			BUG Rating			BUG Rating			BUG Rating			BUG Rating		
Requires one S215 for 5L - 20L Units	5L	5,000	4782	35	138	4891	35	141	4891	35	141	5301	35	153	5461	35	158	5403	35	156	5440	35	157
	Bug Rating		B1-U0-G1			B1-U0-G1			B1-U0-G1			B1-U0-G1			B2-U0-G1			B2-U0-G0			B3-U0-G1		
	8L	8,000	7829	53	148	7823	53	148	8007	59	136	7868	53	149	8105	53	153	8019	53	152	8074	53	153
	Bug Rating		B2-U0-G2			B2-U0-G2			B2-U0-G2			B2-U0-G2			B2-U0-G1			B3-U0-G0			B3-U0-G2		
	10L	10,000	9915	71	139	10191	71	143	10141	78	130	10250	71	143	10558	71	148	10447	71	146	10518	71	147
	Bug Rating		B2-U0-G2			B2-U0-G2			B2-U0-G2			B2-U0-G2			B3-U0-G1			B3-U0-G0			B4-U0-G2		
	12L	12,000	11760	78	151	11915	79	151	12331	88	140	11946	79	151	11322	78	146	11203	78	144	11279	78	145
Bug Rating		B2-U0-G2			B2-U0-G2			B3-U0-G3			B3-U0-G3			B3-U0-G1			B3-U0-G0			B4-U0-G2			
Requires two S215 for 25L - 40L Units	15L	15,000	15301	97	158	14931	102	147	14991	111	135	14970	102	147	15042	97	155	14881	97	153	14854	97	153
	Bug Rating		B3-U0-G3			B3-U0-G3			B3-U0-G3			B3-U0-G3			B3-U0-G1			B3-U0-G1			B4-U0-G2		
	20L	20,000	19488	138	141	19849	143	139	19974	157	128	19900	143	139	20207	138	146	19991	138	145	19954	138	144
	Bug Rating		B3-U0-G3			B3-U0-G3			B3-U0-G3			B3-U0-G3			B3-U0-G2			B4-U0-G1			B5-U0-G3		
	25L	25,000	24590	158	156	25102	167	150	24661	176	140	25167	167	151	24915	158	158	24649	158	156	24604	158	156
	Bug Rating		B3-U0-G3			B3-U0-G3			B3-U0-G4			B3-U0-G4			B4-U0-G2			B4-U0-G1			B5-U0-G3		
	30L	30,000	29590	194	152	29862	203	147	29983	221	135	29940	203	147	30084	194	155	29763	194	153	29708	194	153
Bug Rating		B3-U0-G3			B3-U0-G3			B4-U0-G4			B4-U0-G4			B4-U0-G2			B5-U0-G1			B5-U0-G4			
Requires 2 x S215	35L	35,000	35401	240	148	35449	249	142	35164	267	132	35541	249	143	34694	231	150	35496	240	148	35430	240	148
	Bug Rating		B3-U0-G4			B4-U0-G4			B4-U0-G4			B4-U0-G4			B4-U0-G2			B5-U0-G1			B5-U0-G4		
	40L	40,000	38977	277	141	39697	286	139	39947	313	128	39800	286	139	40414	277	146	39982	277	145	39908	277	144
Bug Rating		B4-U0-G4			B4-U0-G4			B4-U0-G5			B4-U0-G5			B4-U0-G2			B5-U0-G1			B5-U0-G4			
Requires 2 x S215	45L	45,000	N/A			N/A			N/A			N/A			44670	313	143	45211	322	140	45127	322	140
	Bug Rating		N/A			N/A			N/A			N/A			B4-U0-G2			B5-U0-G1			B5-U0-G5		
	Angled Back Light Shield		N/A			N/A			N/A			N/A			2 x S215			2 x S215			2 x S215		

