



Catalog Number

Project

Type

## Features & Specifications

### Application

The EL Indirect Luminaire is a classically styled fixture fit for any interior. They are designed to be wall mounted.

### Features

The direct/indirect lighting configuration provides ample downlight for tasks or general illumination while providing an aesthetically pleasing uplight to brighten spaces and eliminate the "cave" effect. Provided with a ribbed acrylic diffuser on the top side of the fixture and the option of a ribbed acrylic diffuser or baffle on the bottom side.

### Construction

The housing is constructed of rigid extruded aluminum to provide a light weight load to walls. Fixtures can be individually mounted or installed in a continuous row.

### Electrical System

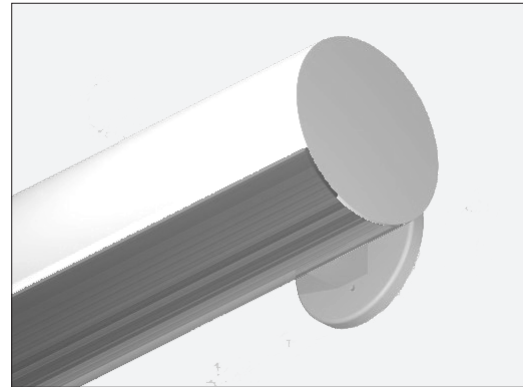
ETL listed. Suitable for damp locations. Damp location emergency pack must be specified separately. Ballasts are solid-state electronic. Ballasts and lamp holders are replaceable without removing from ceiling. Discrete voltage must be specified for emergency pack options when wired with flex.

### Finish

All reflective surfaces are finished with a high reflectance, lighting fixture white polyester powder. Special finishes available upon request.

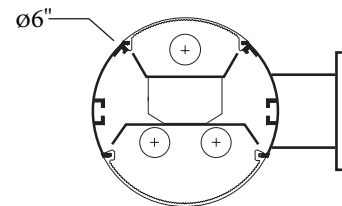
## ECLIPSE SERIES

### EL 6" ROUND WALL LUMINAIRE



\*End Caps must be ordered separately.  
See Page 2 for ordering information

### DIMENSIONS



Please contact your Horizon Sales Representative for more information.

All dimensions subject to change without notice.

### Ordering Nomenclature

Ex: (EL 6" Round, 3 Lamp, F32T8, White Finish, Lens, Multi-Volt = EL3321D)

\*End Caps must be ordered separately.  
See Page 2 for ordering information

--	--	--	--	--	--	--	--

SERIES EL	NUMBER OF LAMPS PER CROSS SECTION	WATTAGE/TYPE	DIFFUSER	FIXTURE COLOR	VOLTAGE	BALLAST FACTOR	OPTIONS
For tandem double-length unit, add suffix T Ex: ELT	2 (1 up/1 down)	14 - 14W T5, 22" 17 - 17W T8, 24" 24 - 24W T5ho, 22"	1 - Lens 2 - Baffle	BLANK - White T - Titanium B - Black SP - Special	D - Multi-Volt 1 - 120V 2 - 277V 3 - 347V 4 - 480V	BLANK - Normal H - High L - Low	10RS - ≤10% THD, Rapid Start P - Program Start 20 - ≤20% THD EB5 - 500 Lumen Emergency Ballast EB7 - 700 Lumen Emergency Ballast EB14 - 1400 Lumen Emergency Ballast EB30 - 3000 Lumen Emergency Ballast IS - Independent Switching (Up/Down) FBF - Fast-Blow Fuse SBF - Slow-Blow Fuse AC63 - 6', 3/8" dia., Armored Flex Cable SJ6 - 6', 3/8" dia., 16/3 SJ Cord SJ10 - 10', 3/8" dia., 16/3 SJ Cord SJ15 - 15', 3/8" dia., 16/3 SJ Cord PWO - Palletized without Cartons CD - Continuous Dimming (T8) SD - Step Dimming (T8) WOC - 120/347 Volt Sensor
	3 (1 up/2 down)	28T5 - 28W T5, 46" 28T8 - 28W T8, 48"			*Multi-Volt is 120/277V		WOC1 - 480 Volt Sensor
	3X (2 up/1 down)	32 - 32W T8, 48" 48HO - 60W 800mA, 48"					C1 - 6' Cord w/120V Nema Plug 16/3 15A C2 - 6' Cord w/277V Nema Plug 16/3 15A C3 - 10' Cord w/277V Nema Plug 16/3 20A C4 - 6' Cord w/480V Nema Plug 16/3 20A
	4 (2 up/2 down)	54 - 54W T5HO, 46"					
	(Tandem fixture bodies will have two cross sections per fixture doubling the length and number of lamps per fixture)						

### ADDITIONAL OPTIONS

WH34- Wiring Harness 3-Wire 4-Foot  
WH44- Wiring Harness 4-Wire 4-Foot  
WH54- Wiring Harness 5-Wire 4-Foot  
WH38- Wiring Harness 3-Wire 8-Foot  
WH48- Wiring Harness 4-Wire 8-Foot  
WH58- Wiring Harness 5-Wire 8-Foot

\*See Second Page for End Cap Information

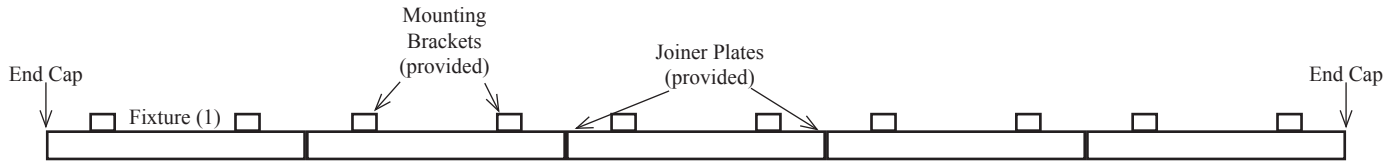
Energy Saving Tip!  
Our Occupancy Sensor option instantly turns lights on and off

HORIZON LINEAR LIGHTING  
214.350.0591

2707 SATSUMA DRIVE  
800.225.0727

DALLAS, TX 75229  
WWW.HORIZONLIGHTINGLLC.COM

\*\*All dimensions and specifications are subject to change without notice.\*\*



### End Caps

The Eclipse EL fixture was designed to be mounted as either a stand-alone fixture, or mounted end-to-end for continuous linear rows. The mounting configuration will determine the number of end caps needed to complete an installation.

End Caps should be ordered 2 per fixture for stand-alone fixtures or 2 per row for continuous linear rows (# of fixtures x 2, or # of rows x 2).

Part Number	Description
ELEC	EL Series End Cap (qty one)

### Typical Row Configurations

	Row Length	2'	4'	6'	8'	10'	12'	14'	16'	18'	20'	22'	24'	26'	28'	30'	32'	34'	36'	38'	40'	42'	44'	46'	48'
Fixture Length	2'	1		1		1		1		1		1		1		1		1		1		1		1	
	4'		1	1			1	1			1	1			1	1			1	1			1	1	
	8'				1	1	1	1	2	2	2	2	3	3	3	3	4	4	4	4	5	5	5	5	6
End Caps		2	2	2	2	2	2	2	2	2	2	2	2	2	2	2	2	2	2	2	2	2	2	2	2