



Catalog Number	
Project	Type

Features & Specifications

Application

The EM Direct Luminaire is a classically styled fixture fit for any interior. They are designed to be wall mounted.

Features

The fixture is a direct light fixture. The fixture is ideal for direct general illumination with no glare and an aesthetically pleasing housing. Provided with a ribbed acrylic diffuser.

Construction

The housing is constructed of rigid extruded aluminum to provide a light weight load to walls. Fixtures can be individually mounted or installed in a continuous row.

Electrical System

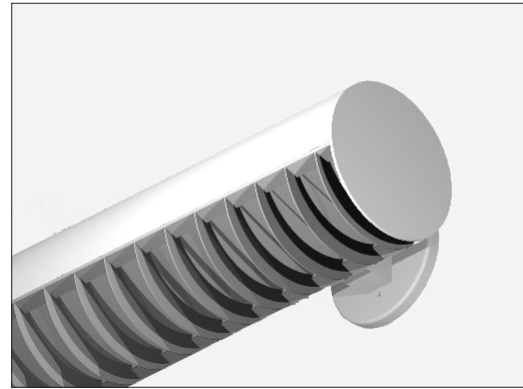
ETL listed. Suitable for damp locations. Damp location emergency pack must be specified separately. Ballasts are solid-state electronic. Ballasts and lamp holders are replaceable without removing from ceiling. Discrete voltage must be specified for emergency pack options when wired with flex.

Finish

All reflective surfaces are finished with a high reflectance, lighting fixture white polyester powder. Special finishes available upon request.

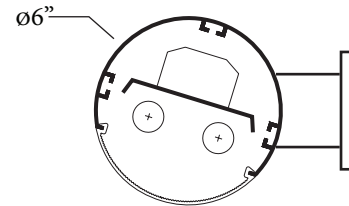
ECLIPSE SERIES

EM 6" ROUND WALL LUMINAIRE



*End Caps must be ordered separately.
See Page 2 for ordering information

DIMENSIONS



Please contact your Horizon Sales Representative for more information.

All dimensions subject to change without notice.

Ordering Nomenclature

Ex: (EM 6" Round, 2 Lamp, F32T8, White Finish, Lens, Multi-Volt = EM2321D)

*End Caps must be ordered separately.
See Page 2 for ordering information

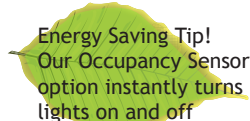
--	--	--	--	--	--	--	--

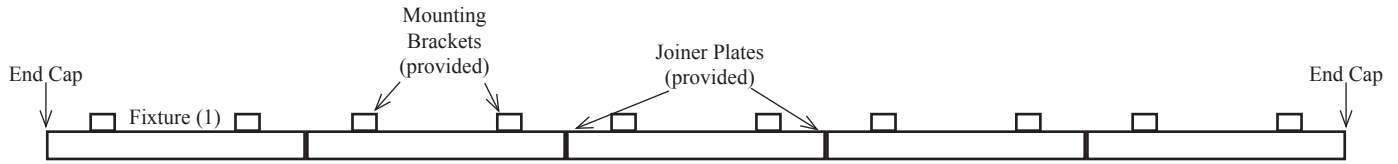
SERIES EM	NUMBER OF LAMPS PER CROSS SECTION	WATTAGE/TYPE	DIFFUSER	FIXTURE COLOR	VOLTAGE	BALLAST FACTOR	OPTIONS
For tandem double-length unit, add suffix T Ex: EMT	2	14 - 14W T5, 22"	1 - Lens	BLANK - White	D - Multi-Volt	BLANK - Normal	10RS - ≤10% THD, Rapid Start
		17 - 17W T8, 24"	2 - Baffle	T - Titanium	1 - 120V	H - High	P - Program Start
		24 - 24W T5ho, 22"		B - Black	2 - 277V	L - Low	20 - ≤20% THD
		28T5 - 28W T5, 46"		SP - Special	3 - 347V		EB5 - 500 Lumen Emergency Ballast
		28T8 - 28W T8, 48"			4 - 480V		EB7 - 700 Lumen Emergency Ballast
		32 - 32W T8, 48"					EB14 - 1400 Lumen Emergency Ballast
		48HO - 60W 800mA, 48"					EB30 - 3000 Lumen Emergency Ballast
		54 - 54W T5HO, 46"					FBF - Fast-Blow Fuse
							SBF - Slow-Blow Fuse
							AC63 - 6', 3/8" dia., Armored Flex Cable
						SJ6 - 6', 3/8" dia., 16/3 SJ Cord	
						SJ10 - 10', 3/8" dia., 16/3 SJ Cord	
						SJ15 - 15', 3/8" dia., 16/3 SJ Cord	
						PWO - Palletized without Cartons	
						CD - Continuous Dimming (T8)	
						SD - Step Dimming (T8)	
						WOC - 120/347 Volt Sensor	
						WOC1 - 480 Volt Sensor	
						C1 - 6' Cord w/120V Nema Plug 16/3 15A	
						C2 - 6' Cord w/277V Nema Plug 16/3 15A	
						C3 - 10' Cord w/277V Nema Plug 16/3 20A	
						C4 - 6' Cord w/480V Nema Plug 16/3 20A	

ADDITIONAL OPTIONS

- WH34- Wiring Harness 3-Wire 4-Foot
- WH44- Wiring Harness 4-Wire 4-Foot
- WH54- Wiring Harness 5-Wire 4-Foot
- WH38- Wiring Harness 3-Wire 8-Foot
- WH48- Wiring Harness 4-Wire 8-Foot
- WH58- Wiring Harness 5-Wire 8-Foot

*See Second Page for End Cap Information





End Caps

The Eclipse EM fixture was designed to be mounted as either a stand-alone fixture, or mounted end-to-end for continuous linear rows. The mounting configuration will determine the number of end caps needed to complete an installation.

End Caps should be ordered 2 per fixture for stand-alone fixtures or 2 per row for continuous linear rows (# of fixtures x 2, or # of rows x 2).

Part Number	Description
EMEC	EM Series End Cap (qty one)

Typical Row Configurations

	Row Length	2'	4'	6'	8'	10'	12'	14'	16'	18'	20'	22'	24'	26'	28'	30'	32'	34'	36'	38'	40'	42'	44'	46'	48'
Fixture Length	2'	1		1		1		1		1		1		1		1		1		1		1		1	
	4'		1	1			1	1			1	1			1	1			1	1			1	1	
	8'				1	1	1	1	2	2	2	2	3	3	3	3	4	4	4	4	5	5	5	5	6
End Caps		2	2	2	2	2	2	2	2	2	2	2	2	2	2	2	2	2	2	2	2	2	2	2	2