

Medium Glass LED Wall Pack

Catalog Number	
Project	Type

FEATURES & SPECIFICATIONS

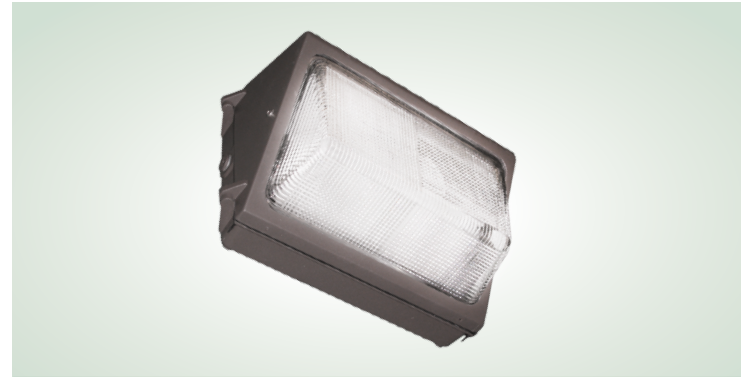
APPLICATION — The high performance luminaire is designed for applications where long life, low maintenance, and consistent color rendering is required. Areas with limited accessibility due to fixture location or where heavy pedestrian traffic makes maintenance difficult are ideal applications such as building facade lighted or wall mounted security lighting. The traditional design style of the luminaire allows it to be seamlessly integrated into existing systems when necessary.

CONSTRUCTION — The heavy duty housings are constructed of two-piece die cast aluminum and are hinged together. The door frame is easily removed during install and secures the borosilicate glass lens. ETL listed for wet locations.

FINISH — A Super Durable Polyester powder coat finish is electrostatically applied in our state of the art paint facility. Standard colors available: Bronze.

OPTICAL SYSTEM — The glass lens is faceted for optimum performance in wall mounted applications and is sealed with a silicone gasket.

ELECTRICAL SYSTEM — Available in a 5000K Cool White color temperature. Available with 90-300V 50/60 Hz Class II power supply. LED's rated up to 50,000 (B50 L70) hours for 700 mA operation at 25°C ambient temperature. 40-10V dimming. Built-in Active PFC Function >95%/Full load. LED Power Supply



SERIES	HOUSING HEIGHT	LENGTH & WIDTH
LMWG	9.00"	7.31" x 13.00"

conforms to UL1310 Class 2 and UL8750 standards and is IP67 rated for wet locations.

MOUNTING — Built-in template with 1/2" threaded NPT knockouts provided standard.

LISTINGS — LED Power Supply listed for wet locations (IP67). LED bricks ETL listed for wet locations (IP64). Meets US and Canadian safety standards. -40°C to 50°C ambient operation. RoHS Compliant.

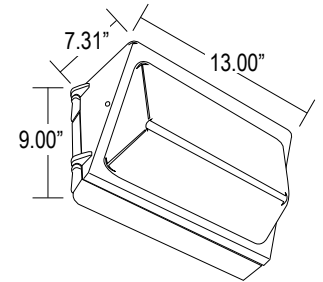
ORDERING INFORMATION

Choose the bold face options for the appropriate luminaire configuration for your application and enter on the line above each fixture attribute. Accessories may be factory installed, depending on the particular accessory chosen, but still be ordered as a separate line item.

EXAMPLE:

LMWG 1 C 8 C 1 BZ

Dimensions shown are for fixture bodies only. Mounting options must be ordered separately.



LMWG						
SERIES	# OF BRICKS	COLOR TEMP	# LED'S PER BRICK	DRIVE CURRENT	VOLTAGE	FINISH
	1 = 1 Brick	C = Cool White (5000K)	8 = 18 LEDs	C = 700 mA	1 = Multi-Volt ¹ 2 = 480V 3 = 347	BZ = Bronze BK = Black GR = US Green WH = White SP = Special ²

ACCESSORIES (Order as separate line items)

- PDC150PG** Medium Polycarbonate Guard
- PDC150WG** Medium Wire Guard
- P1000PC** 120V Button Type Photocell
- PC3** 208/277V Button Type Photocell
- S45** Medium Cutoff Shield

1 = Multi-Volt is an auto ranging power supply from 90V to 300V input.

LUMINAIRE CHARACTERISTICS

Cool White (5000K) 700 mA Drive Current

Drive Current	Color Temp	Delivered Lumens	System Wattage	L70 @ 25°C (hrs)
C (700 mA)	5000K	3895	41W	>50K

FIXTURE & MOUNTING ACCESSORIES

PDC150PG

Medium Polycarbonate Guard



PDC150WG

Medium Wire Guard



P1000PC

Button Type Photocell



S45

Medium Cutoff Shield

