



Catalog Number	
Project	Type

FEATURES & SPECIFICATIONS

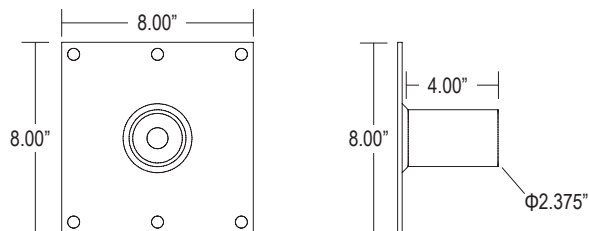
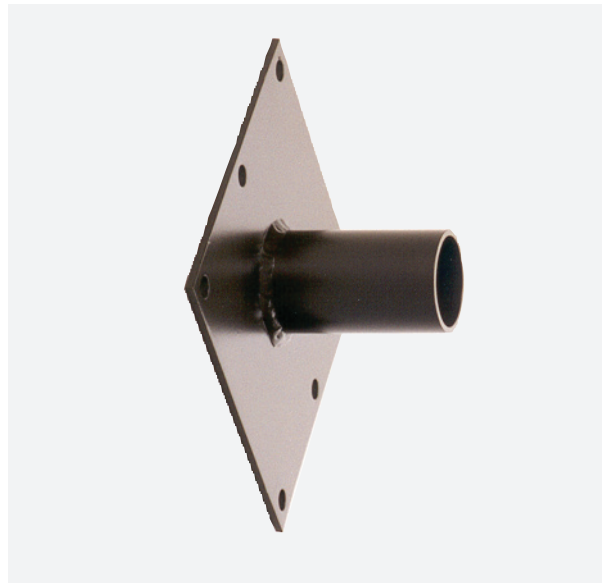
APPLICATION — The WMH 2-3/8" OD Horizontal Tenon Wall Bracket is designed to mount Techlight light fixtures that are equipped with a 2AF Adjustable Knuckle onto a 2-3/8" OD horizontal tenon.

CONSTRUCTION — The heavy duty wall bracket is constructed of 8" square aluminum plate. A 2-3/8" OD x 4" tall horizontal tenon is provided for fixture mounting. The 8" x 8" mounting plate has 6 bolt holes for secure mounting. Mounting hardware provided by others.

FINISH — A Super Durable Polyester powder coat finish is electrostatically applied in our state of the art paint facility. Standard colors available: Black, Bronze, US Green, White. Custom colors available upon request.



2-3/8" OD Horizontal Tenon Wall Bracket **WMH**



Series	Tenon Length	Plate Size
WMH	4.00"	8.00" x 8.00"

ORDERING INFORMATION

Choose the bold face options for the appropriate luminaire configuration for your application and enter on the line above each fixture attribute. Accessories may be factory installed, depending on the particular accessory chosen, but still be ordered as a separate line item.

WMH	
Series	Finish
WMH	BK Black
	BZ Bronze
	GR US Green
	WH White
	SP Special ²

Example: **WMH-BZ**