



|                |      |
|----------------|------|
| Catalog Number |      |
| Project        | Type |

## FEATURES & SPECIFICATIONS

**APPLICATION** — The Genesis Gen2 line of LED Landscape Bullets are the most versatile LED fixtures on the market today. The high end residential grade system was designed for 120V operation residential applications.

**CONSTRUCTION** — The die cast aluminum heat sink has 12 heat dissipating fins to maintain a cool operating LED for maximum life. The fins are independently supported to allow for unobstructed airflow. The fixture is designed to efficiently perform in any mounting orientation.

**FINISH** — A cathodic epoxy electrocoat primer or E-Coat is applied to all die cast aluminum components. E-coating provides the ultimate in corrosion and chemical resistance, providing superior salt spray, humidity and cyclic corrosion endurance. After the E-Coat is applied a super durable polyester powder coat finish is electrostatically applied in our state of the art paint facility. Standard colors available: Black, Bronze, OD Green, White. Custom colors available upon request.

**OPTICAL SYSTEM** — Techlight's proprietary OpticapSystem™ utilizes factory installed optical lenses & reflectors to increase fixture lumen output efficiency. The system is provided with a high performance convex lenticular prismatic flood or a plano-convex spot optical lens. The flood & spot optical lenses are molded from low iron tempered glass. A 96% reflective UV stabilized injection molded reflector is included with each system. The OpticapSystem shields are designed for optimum glare control in up or downlighting positions. A variety of glass color filters are available to meet the designers specific color control needs.

**ELECTRICAL SYSTEM** — NOTE: A Techlight Surge Protector must be incorporated into the LED system at the beginning of each circuit as a minimum. Failure to do so will void the system warranty. Fixture operates at 120V input voltage. Nominal open circuit current .08 amps. A 9 watt LED source provides approximately 565 (CW) Lumens of light. System is compatible with the use of a rotary TRIAC Dimmer.

**MOUNTING** — The die cast aluminum mount is secured to the heat sink by stainless steel screws and is

# GS2 SERIES

## Genesis Gen2 Small LED Landscape Bullet

Patent: D0648056



Fixture shown with  
SGS2DN60 Down Shield

| SERIES     | HOUSING HEIGHT | LENGTH & WIDTH |
|------------|----------------|----------------|
| <b>GS2</b> | 2.7"           | 4.8" x 2.0"    |

sealed with an integral o-ring. A 1/2" threaded knuckle is provided standard.

**LISTINGS** — ETL listed for wet locations. Meets US and Canadian safety standards. -40°C to 50°C ambient operation.

**WARRANTY** — Techlight warrants the LED lighting Product(s) to be free from defects in material and workmanship for a period of three years for LED Light Engines and LED Power Components, from the date of shipment. Ground mounted products that are provided standard with our proprietary E-Coat pretreatment prior to the application of a powdercoat finish will carry a full 10 year finish warranty. Proper maintenance is required for full finish warranty.

## ORDERING INFORMATION

Choose the bold face options for the appropriate luminaire configuration for your application and enter on the line above each fixture attribute. Accessories may be factory installed, depending on the particular accessory chosen, but still be ordered as a separate line item.

EXAMPLE:

**GS2 FL 9 CW 120 ODG**

| <b>GS2</b> |                         |               |                                                                                                    |                      |                                                                                                                           |
|------------|-------------------------|---------------|----------------------------------------------------------------------------------------------------|----------------------|---------------------------------------------------------------------------------------------------------------------------|
| SERIES     | DISTRIBUTION            | WATTAGE       | COLOR TEMP                                                                                         | VOLTAGE              | FINISH                                                                                                                    |
|            | <b>FL</b> = Flood (60°) | <b>9</b> = 9W | <b>CW</b> = Cool White<br><b>NW</b> = Neutral White<br><b>WW</b> = Warm White<br><b>CRI &gt;80</b> | <b>120</b> = 120 VAC | <b>BZ</b> = Bronze<br><b>BK</b> = Black<br><b>ODG</b> = OD Green<br><b>WH</b> = White<br><b>SP</b> = Special <sup>1</sup> |

## ACCESSORIES

(Order as separate line items)

- SGS2DN60** Downlight Shield
- SGS2UP30** Uplight Shield
- SGS2TUBE** Tube Shield
- B01GL** Tree Base with Ground Lug
- B02** 1/2" Conduit Base
- B03** 4" Round 3 Hole Cover
- B16-12** Palm Tree Base with 12' Strap
- SMSB** 12" x 1" Mounting Stake (Brass)
- MMSB** 18" x 1" Mounting Stake (Brass)
- LMSB** 20" x 2.5" Mounting Stake (Brass)
- LMS** 20" x 2.5" Mounting Stake (SCH 40 PVC)
- LMSZ-BK** 20" x 2.5" Mounting Stake (Zinc Top Painted Black)
- 102552<sup>2</sup>** 120-277V 10kV Surge Protector
- TLHB800RCH** Digital Timer
- TLTN11** Mechanical Timer

## ACCESSORIES

(Order as separate line items)

- PSJ163** 16 Gauge 3 Strand Lead Wire
- TLTN11** Mechanical Timer
- PSJ163** 16 Gauge 3 Strand Lead Wire
- TLSBBJB** Brass Junction Box
- LEDSFG120LENS** Green Glass Lens Filter (each)
- LEDSB120LENS** Blue Glass Lens Filter (each)

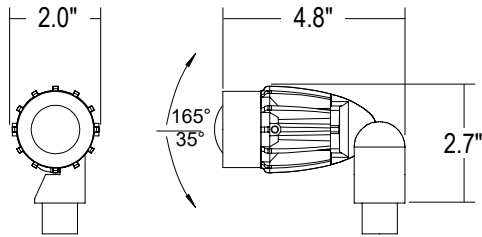
## NOTES

- 1 = Custom RAL color matching is available. Contact your sales representative for additional info.
- 2 = A Techlight Surge Protector must be incorporated into the LED system at the beginning of each circuit as a minimum. Failure to do so will void the system warranty.
- 3 = For Warm White options Consult Factory for availability.



## AVAILABLE FIXTURE DIMENSIONS

Dimensions shown are for fixture bodies only. Mounting options must be ordered separately.



## MOUNTING ACCESSORIES

**B16-12**  
Palm Tree Base with 12' Strap



**B03**  
4" Round 3 Hole Cover



**B01GL**  
Tree Base with Ground Lug



**B02**  
1/2" Conduit Base



**TLSBBJB**  
Brass Junction Box



**SMSB, MMSB**  
12" x 1" Mounting Stake (Brass)  
18" x 1" Mounting Stake (Brass)

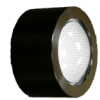


**LMSB, LMS, LMSZ-BK**  
20" x 2.5" Mounting Stake (Brass)  
20" x 2.5" Mounting Stake (SCH 40 PVC)  
20" x 2.5" Mounting Stake (Zinc Top Painted Black)



## ADDITIONAL FIXTURE OPTIONS & ACCESSORIES

**\* OPTION \***  
**GS2CAPCVXFLDREFL (Factory Installed)**  
60° Flood OpticapSystem™ Flood Optic



**102552<sup>2</sup>**  
10kV Surge Protector



**P20000PC-LVENC**  
Photocell (DC Transformer Operation Only)



**PCCORD-6** 6' Photocell Extension Cord  
**PCCORD-8** 8' Photocell Extension Cord



**PSJ163**  
16 Gauge 3 Strand Lead Wire



**TLTN11**  
Mechanical Timer



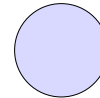
**TLHB800RCH**  
Digital Timer



**LEDSFG120LENS**  
Green Glass Lens Filter (each)

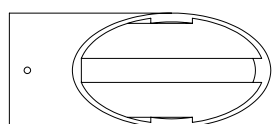
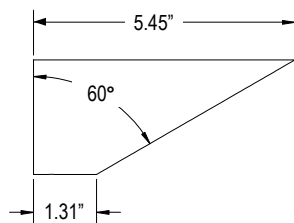


**LEDSB120LENS**  
Blue Glass Lens Filter (each)

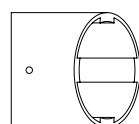
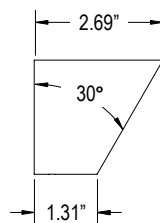


## SHIELDS

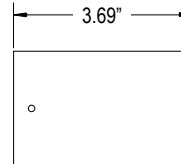
**SGS2DN60**  
Downlight Shield



**SGS2UP30**  
Uplight Shield



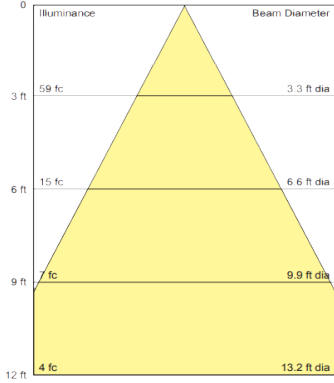
**SGS2TUBE**  
Tube Shield



## PERFORMANCE

### ILLUMINANCE CONE DIAGRAMS

**GS2FL9CW120** 9W GS2 LED Bullet  
**Flood Optic** Color Temperature: 5,900 K



\*Lumen output less any shielding

| Fixture | Color Temp | 9W Lumen Output |
|---------|------------|-----------------|
| GS2     | CW (5900K) | 447             |
|         | NW (4000K) | 425             |
|         | WW (3000K) | 402             |

**WARNING:** Maintenance performed including the replacement of LED bricks while power is still supplied to the luminaire may result in system failures and will void the warranty.

