



Katen LED Area Light

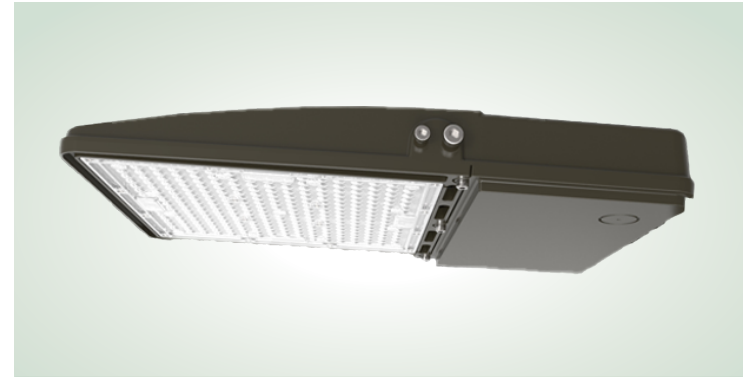
Catalog Number	
Project	Type

FEATURES & SPECIFICATIONS

APPLICATION — The Katen Series of high output LED luminaires are designed for new outdoor lighting and to be a replacement for HID area lights. A compact, one-piece die cast housing, saving costs versus models that are extruded or cast and require additional parts. The heat sink is included in the actual casting, further minimizing the need for additional parts. Standard Arm Mount features an integral arm, increasing strength and simplifying installation. Each fixture can accommodate an optional twist-lock photocontrol which allows for further energy savings and an optional PIR sensor allows for security. They are optimal for lighting applications where long life, low maintenance, and consistent color rendering is required. The high lumen output allows the fixture to be used for parking, restaurant, quick service, shopping centers, or general area lighting applications. All KTN optics are Full Cutoff design. The new KTN LED Area Light delivers maximum value by providing significant energy savings, long life and outstanding photometric performance at an affordable price. The KTN delivers 10,000 to 39,000 lumens allowing it to replace up to (2) 1000W HID luminaires.

FINISH — Standard color available: Bronze. Heavy-duty housing is constructed of cast aluminum with corrosion resistant powder coat finish.

MOUNTING — Available with several or multiple unique mountings, specifically designed to provide one-for-one, and in some cases two-for-one, solutions for replacing existing metal halide or high pressure sodium lighting. Features an integral universal mounting mechanism that allows the luminaire to be mounted on most existing drill hole patterns. This "no-drill" solution provides significant labor savings. An easy-access door on the bottom of mounting arm allows for wiring without opening the electrical compartment. A mast arm adaptor, adjustable integral slipfitter and other mounting configurations are available.



SERIES	LENGTH / WIDTH / HEIGHT
KTN	13L ~ 19L: 10.4" x 2.3" x 17.6"
	31L ~ 39L: 13.6" x 2.5" x 22"

ELECTRICAL SYSTEM — Available in up to a 39,000 nominal lumens in most optical distributions with either 3000K Warm White, 4000K Neutral White or 5000K Cool White color temperatures. Universal input voltage 120-277Vac, 50/60Hz; 347/480Vac. Operating temperature range -40°C to 40°C.

WARRANTY — The complete luminaire is covered by a 5-year limited warranty.

ORDERING INFORMATION

Choose the bold face options for the appropriate luminaire configuration for your application and enter on the line above each fixture attribute. Accessories may be factory installed, depending on the particular accessory chosen, but still be ordered as a separate line item.

EXAMPLE:

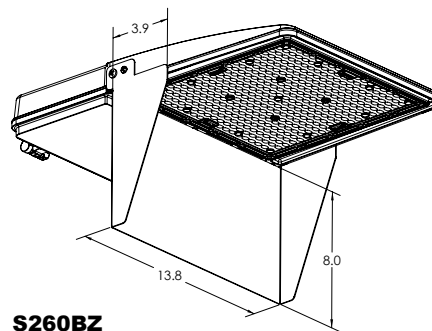
KTN C 13L T3 1 BZ

KTN						
SERIES	CCT	WATTAGE/NOMINAL LUMENS	OPTIC	VOLTAGE	FINISH	OPTIONS
KTN	W = 3000K N = 4000K C = 5000K	13L = 100 watt, 13,000 lumens 19L = 150 watt, 19,500 lumens 31L = 240 watt, 31,200 lumens 39L = 300 watt, 39,000 lumens	T3 = Type 3 T4 = Type 4 T5 = Type 5	1 = 120-277V ² 2 = 347 - 480V ³	BZ = Bronze	PCR7 = 7-Pin Twist-Lock Photocell receptacle ANSIC136.41 with Shorting Cap IMS = Fixture Mount Passive Infrared Motion Sensor (Lenses Ordered Separately)

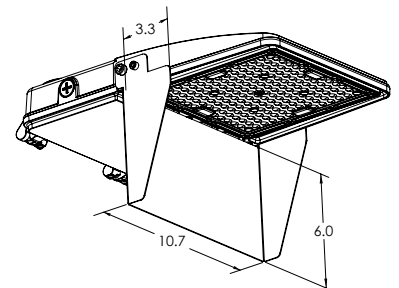
ACCESSORIES (Order as separate line items)

- TLWSFSIR-100** Remote Handheld Sensor Configuration Tool
- TLWSFSP-L2** 360° lens, maximum coverage 48" diameter from 8' height
- TLWSFSP-L3** 360° lens, maximum coverage 40" diameter from 20' height
- TLWSFSP-L7** 360° lens, maximum coverage 100" diameter from 40' height
- PC2** 347-480V Twist-Lock Photocell
- PC7** Multi-Tap (105-285V) Twist Lock Photocell
- KTN 4RA** 4" Round Pole Adapter
- KTN 5RA** 5" Round Pole Adapter
- KTN 2AF** Slip Fitter
- KTN ARM** Arm
- KTN B25** Adjustable Arm
- KTN B15** Trunnion Mount
- S265BZ** House Side Shield for 13L - 19L
- S260BZ** House Side Shield for 31L - 39L
- PSJ163-600** 16 Gauge 3 Strand Lead Wire (color coded)

DIMENSIONS



S260BZ
House Side Shield for
31L - 39L



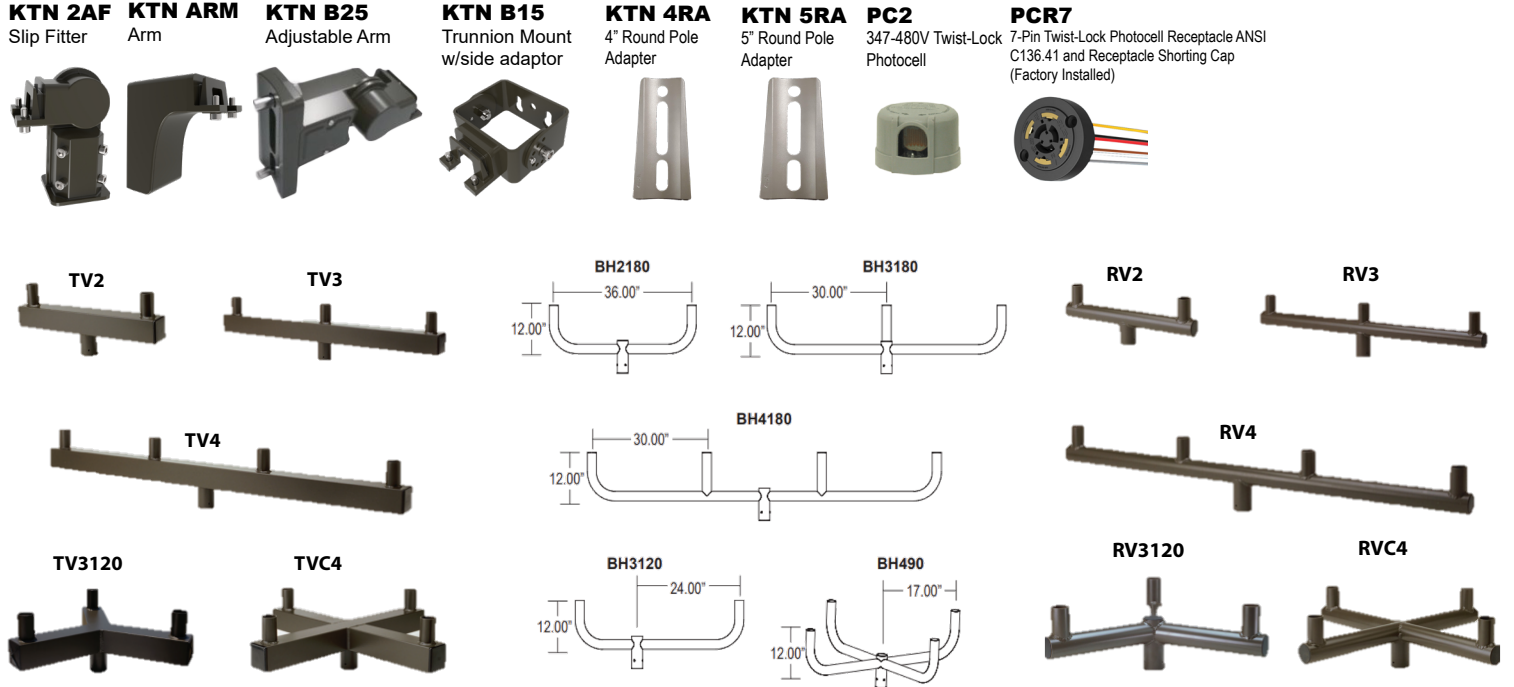
S265BZ
House Side Shield for
13L - 19L

NOTES

- 1 = Longer than usual lead times for this option. Consult factory.
- 2 = Built-in 10kA Surge Protection. Different ratings are available.
- 3 = Longer than usual lead times for this option in 13L and 19L. Consult factory.



Mounting Options/Accessories



FIXTURE MOUNT SENSOR

APPLICATION — The sensor is ideal for areas such as parking facilities, gas stations, pedestrian pathways, and warehouses. A choice of four lenses ensures complete coverage for mounting heights up to 40'.

OPERATION — Typically, the sensor ramps lighting On to the selected High mode level when motion is detected and the ambient light level is below the hold off setpoint. After the sensor stops detecting movement and the time delay elapses, lights fade to the Low mode level. If there is no motion during the subsequent cut off time delay, the lights will turn Off. For dusk to dawn control, the integral photocell can switch the lights On and Off based on the ambient light level so that lighting remains on overnight even without motion detection.

FEATURES —

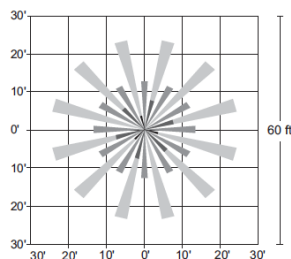
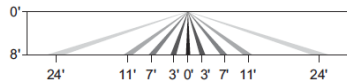
- Provides line voltage On/Off switching
- High and low modes fully adjustable from 0 to 10V
- Time delay from 5 to 30 minutes
- Optional cut off delay
- Adjustable ramp up and fade down times
- Optional daylighting setpoints feature automatic calibration, or permit manual adjustment
- Polycarbonate construction; flame retardant, UV resistant, impact resistant, recyclable
- UL244A and UL508



SENSOR LENSES FIELD OF VIEW

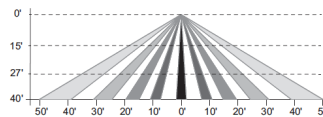
TLWSFSP-L2

360° lens, maximum coverage 48' diameter from 8' height



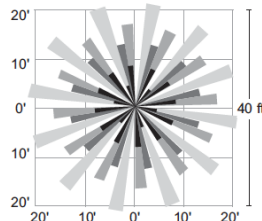
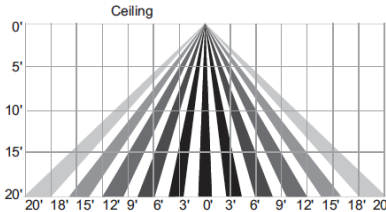
TLWSFSP-L7

360° lens, maximum coverage 100' diameter from 40' height



TLWSFSP-L3

360° lens, maximum coverage 40' diameter from 20' height



TECHLIGHT
INNOVATION IN ILLUMINATION

AVAILABLE FIXTURE DIMENSIONS

Dimensions shown are for fixture bodies only. Mounting options must be ordered separately. Fixture shown with arm sold separately.

	KTN 13L -19L	KTN 30L - 39L
<p>KTN ARM Fixed Arm Mount</p>		
<p>KTN B25 Adjustable Arm Mount</p>		
<p>KTN 2AF Slipfitter Mount</p>		
<p>KTN B15 Trunnion Mount</p>		

EPA's RATING FOR VARIOUS MOUNTING CONFIGURATIONS [FT²]

Angle	100W - 150W					240W - 300W				
	0	20	30	45	60	0	20	30	45	60
TV2	1.50	1.90	2.30	2.70	3.10	1.60	2.40	3.00	3.70	4.30
TV3	2.50	3.20	3.70	4.40	5.00	2.70	3.90	4.80	5.90	6.70
TV3120	1.70	2.30	2.60	3.10	3.50	1.90	2.80	3.40	4.10	4.70
TV4	3.60	4.40	5.20	6.10	6.80	3.80	5.40	6.60	8.10	9.20
TVC4	2.20	2.70	3.10	3.60	3.90	2.40	3.30	3.90	4.60	5.20
BH2180	1.00	1.40	1.80	2.30	2.60	1.10	1.90	2.50	3.20	3.80
BH3180	1.50	2.20	2.70	3.40	4.00	1.70	2.90	3.80	4.90	5.70
BH3120	1.20	1.80	2.20	2.60	3.00	1.40	2.40	2.90	3.70	4.20
BH4180	2.20	3.10	3.80	4.80	5.50	2.40	4.10	5.20	6.70	7.80
BH490	1.60	2.10	2.50	3.00	3.30	1.80	2.70	3.30	4.00	4.60
RV2	0.90	1.40	1.70	2.20	2.60	1.00	1.90	2.40	3.20	3.70
RV3	1.50	2.20	2.70	3.40	3.90	1.70	2.90	3.80	4.90	5.70
RV3120	1.20	1.70	2.10	2.50	2.90	1.30	2.30	2.80	3.60	4.10
RV4	2.10	3.00	3.70	4.60	5.30	2.30	3.90	5.10	6.60	7.70
RVC4	1.50	2.00	2.40	2.80	3.20	1.70	2.60	3.20	3.90	4.50
KTN 2AF	0.40	0.60	0.80	1.10	1.20	0.50	0.90	1.20	1.50	1.80
KTN B15	0.40	0.60	0.80	1.00	1.20	0.40	0.80	1.10	1.50	1.80
KTN B25	0.40	0.60	0.80	1.10	1.20	0.50	0.90	1.20	1.50	1.80
KTN B25 2180	0.80	1.20	1.60	2.10	2.40	0.90	1.70	2.30	3.00	3.60
KTN B25 290	0.70	0.90	1.10	1.40	1.50	0.80	1.20	1.50	1.90	2.20
KTN B25 390	1.00	1.30	1.50	1.70	1.90	1.20	1.60	1.90	2.30	2.60
KTN B25 3120	1.00	1.60	2.00	2.40	2.80	1.20	2.20	2.70	3.50	4.00
KTN B25 490	1.30	1.80	2.20	2.70	3.00	1.50	2.40	3.00	3.70	4.30
KTN ARM	0.40	n/a	n/a	n/a	n/a	0.50	n/a	n/a	n/a	n/a
KTN ARM 2180	0.80	n/a	n/a	n/a	n/a	0.90	n/a	n/a	n/a	n/a
KTN ARM 290	0.70	n/a	n/a	n/a	n/a	0.80	n/a	n/a	n/a	n/a
KTN ARM 3120	1.10	n/a	n/a	n/a	n/a	1.30	n/a	n/a	n/a	n/a
KTN ARM 3121	1.10	n/a	n/a	n/a	n/a	1.30	n/a	n/a	n/a	n/a
KTN ARM 490	1.40	n/a	n/a	n/a	n/a	1.60	n/a	n/a	n/a	n/a



LUMINAIRE CHARACTERISTICS

TYPE III OPTIC

Output ID	Nominal Lumens	3000K		
		System Lumens	System Watts	Lm/W
		BUG Rating		
13L	13,000	13,667	105	131
		B3-U0-G3		
19L	19,000	19,863	152	130
		B3-U0-G5		
31L	31,000	30,930	236	131
		B4-U0-G3		
39L	39,000	39,388	301	131
		B4-U0-G5		

TYPE IV OPTIC

Output ID	Nominal Lumens	3000K		
		System Lumens	System Watts	Lm/W
		BUG Rating		
13L	13,000	13,190	105	130
		B3-U0-G4		
19L	19,000	19,322	152	130
		B3-U0-G5		
31L	31,000	30,624	236	130
		B4-U0-G4		
39L	39,000	37,767	301	128
		B3-U0-G4		

TYPE V OPTIC

Output ID	Nominal Lumens	3000K		
		System Lumens	System Watts	Lm/W
		BUG Rating		
13L	13,000	13,374	105	132
		B4-U0-G1		
19L	19,000	19,550	152	130
		B4-U0-G1		
31L	31,000	30,320	236	131
		B4-U0-G1		
39L	39,000	37,750	301	130
		B5-U0-G2		

Output ID	Nominal Lumens	4000K		
		System Lumens	System Watts	Lm/W
		BUG Rating		
13L	13,000	13,643	101	135
		B3-U0-G4		
19L	19,000	19,927	148	134
		B3-U0-G5		
31L	31,000	32,343	232	139
		B4-U0-G4		
39L	39,000	40,571	293	139
		B4-U0-G5		

Output ID	Nominal Lumens	4000K		
		System Lumens	System Watts	Lm/W
		BUG Rating		
13L	13,000	13,475	101	135
		B3-U0-G4		
19L	19,000	19,889	148	134
		B3-U0-G5		
31L	31,000	31,350	232	137
		B4-U0-G4		
39L	39,000	38,665	293	133
		B4-U0-G5		

Output ID	Nominal Lumens	4000K		
		System Lumens	System Watts	Lm/W
		BUG Rating		
13L	13,000	13,962	101	140
		B4-U0-G1		
19L	19,000	20,031	148	134
		B4-U0-G1		
31L	31,000	31,407	232	138
		B5-U0-G1		
39L	39,000	38,868	293	134
		B5-U0-G2		

Output ID	Nominal Lumens	5000K		
		System Lumens	System Watts	Lm/W
		BUG Rating		
13L	13,000	14,228	100	142
		B3-U0-G3		
19L	19,000	19,833	148	134
		B3-U0-G4		
31L	31,000	32,350	232	140
		B4-U0-G4		
39L	39,000	41,587	298	140
		B4-U0-G4		

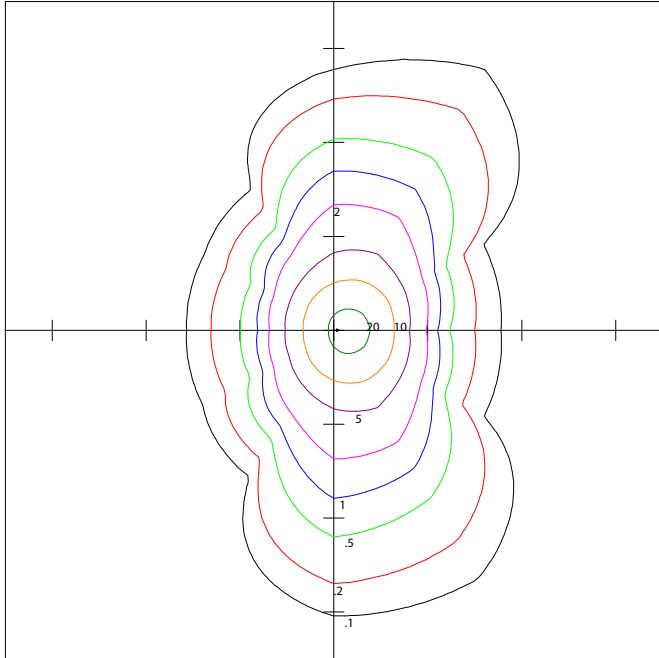
Output ID	Nominal Lumens	5000K		
		System Lumens	System Watts	Lm/W
		BUG Rating		
13L	13,000	13,565	100	136
		B3-U0-G4		
19L	19,000	20,003	148	135
		B3-U0-G5		
31L	31,000	31,442	228	138
		B4-U0-G4		
39L	39,000	38,726	288	134
		B4-U0-G5		

Output ID	Nominal Lumens	5000K		
		System Lumens	System Watts	Lm/W
		BUG Rating		
13L	13,000	14,058	100	141
		B4-U0-G1		
19L	19,000	20,044	148	135
		B4-U0-G1		
31L	31,000	31,601	228	139
		B5-U0-G1		
39L	39,000	39,043	288	136
		B5-U0-G2		



PHOTOMETRIC CHARACTERISTICS

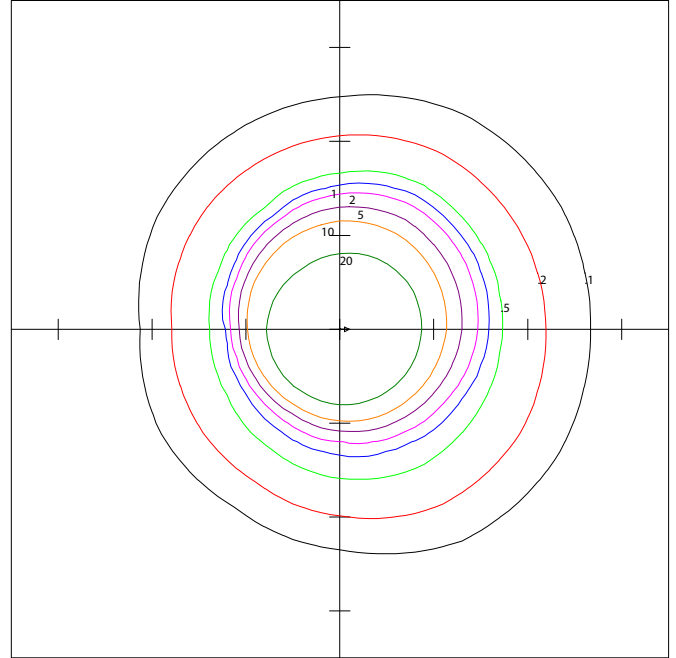
TYPE III OPTIC



Techlight
KTNC39LT31BZ

Horizontal Footcandles
Scale: 1 Inch = 35 Ft.
Light Loss Factor = 1.00
Lumens Per Lamp = 41587.9
Total Lamp Lumens = 41587.9
Mounting Height = 20.00 Ft
Maximum Calculated Value = 25.10 Fc
Arrangement: Single

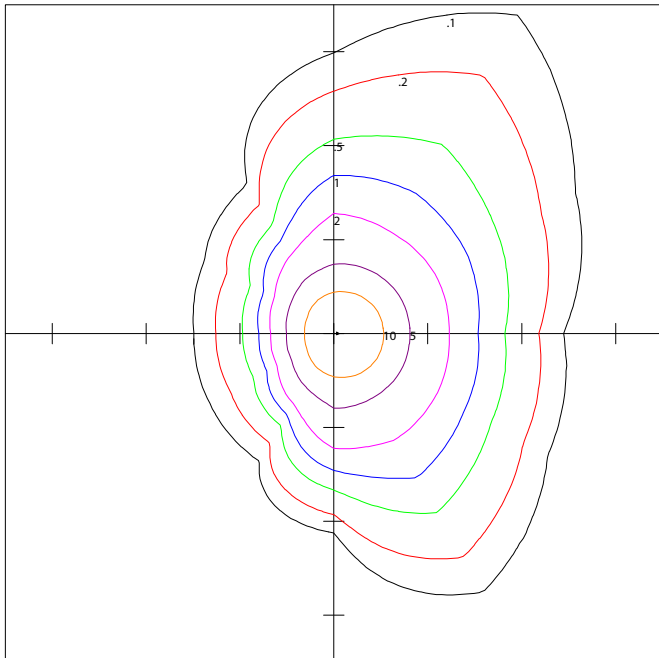
TYPE V OPTIC



Techlight
KTNC39LT51BZ

Horizontal Footcandles
Scale: 1 Inch = 20 Ft.
Light Loss Factor = 1.00
Lumens Per Lamp = 39042.7
Total Lamp Lumens = 39042.7
Mounting Height = 20.00 Ft
Maximum Calculated Value = 37.68 Fc
Arrangement: Single

TYPE IV OPTIC



Techlight
KTNC39LT41BZ

Horizontal Footcandles
Scale: 1 Inch = 35 Ft.
Light Loss Factor = 1.00
Lumens Per Lamp = 38731.8
Total Lamp Lumens = 38731.8
Mounting Height = 20.00 Ft
Maximum Calculated Value = 19.35 Fc
Arrangement: Single



TECHLIGHT
INNOVATION IN ILLUMINATION