



Catalog Number	
Project	Type

FEATURES & SPECIFICATIONS

APPLICATION — The high performance luminaire is designed for full cutoff applications where long life, low maintenance, and consistent color rendering are required. Areas with limited accessibility due to fixture location or where heavy pedestrian traffic makes maintenance difficult are ideal applications such as building facade lighting or wall mounted security lighting. The traditional design style of the luminaire allows it to be seamlessly integrated into existing systems when necessary.

CONSTRUCTION — The heavy duty housing is constructed of die cast aluminum. The optical assemblies are sealed in place using a silicone gasket for weather tight protection. ETL listed for wet locations (IP64). Additional IP66 rating available upon request.

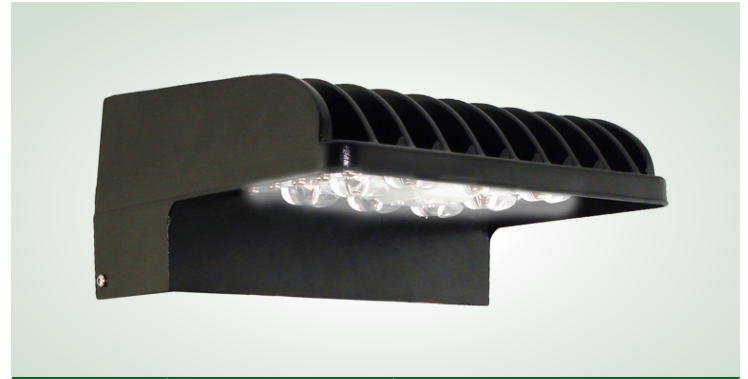
FINISH — A Super Durable Polyester powder coat finish is electrostatically applied in our state of the art paint facility. Standard colors available: Black, Bronze, US Green, White. Custom colors available upon request.

OPTICAL SYSTEM — Made with a state of the art UV stabilized acrylic high performance refractive optical assemblies that use high transmissivity materials to achieve precise photometric distributions. Available in a Type III beam configuration.

ELECTRICAL SYSTEM — Available in a high output LED system in 5000K Cool White (+/- 500K), 4000K Neutral White or 3000K Warm White color. Available with 90-300V 50/60 Hz Class II power supply. LED's rated for over 50,000 hours at 25°C ambient temperature. 0-10V dimming standard. Built-in surge protection up to 10 kV. Built-in Active PFC Function >95%/Full load. LED Power Supply conforms to UL1310 Class 2 and UL8750 standards and is IP67 rated for wet locations.

LHMWP

Full Cutoff Medium Heat Sink LED Wall Pack



SERIES	HOUSING HEIGHT	LENGTH & WIDTH
LHMWP	5.00"	10.10" x 9.70"

MOUNTING — Quick sheet metal mounting bracket connects to a standard J-Box. The bracket has a unique hanging feature to allow easy wire connections. After connections are made, the fixture swings up and is secured with two retaining screws at the top of the fixture. An additional back box is available for applications requiring conduit entry (See Accessories).

LISTINGS — LED Driver listed for wet locations (IP67). LED bricks ETL listed for wet locations (IP64). Meets US and Canadian safety standards. -40°C to 50°C ambient operation.

ORDERING INFORMATION

Choose the bold face options for the appropriate luminaire configuration for your application and enter on the line above each fixture attribute. Accessories may be factory installed, depending on the particular accessory chosen, but still be ordered as a separate line item.

EXAMPLE:

LHMWP C 6L T2 1 BZ

LHMWP					
SERIES	COLOR TEMP	NOMINAL LUMENS	OPTICS	VOLTAGE	FINISH
	C = Cool White (5000K) N = Neutral White (4000K) W = Warm White (3000K)	6L = 6000 Lumens 7L = 7000 Lumens 11L = 11000 Lumens	T2 = Type II T3 = Type III T4 = Type IV	1 = Multi-Volt ¹	BZ = Bronze BK = Black GR = US Green WH = White SP = Special ²

ACCESSORIES (Order as separate line items)

PMHSENCADIM³	Back Box Enclosure with Conduit Entries
LHMWPBBU	Additional Input Ports for 0-10V Dimming
P1000PC⁴	2000 Lumen/90 Minute Battery Back-Up with Fixture Back Box
IP66⁵	Button Type Photocell 120V (1000w)
PC3	Additional IP66 Fixture Rating
TLWSFSP-211	Button Type Photocell 208/277V (1200w)
TLWSFSP-221	High/Low/Off Arm Integrated PIR Photo/Motion Sensor 120-277VAC (Lenses Ordered Separately)
TLWSFSP-100	High/Low/Off Arm Integrated PIR Photo/Motion Sensor 120-480VAC (Lenses Ordered Separately)
TLWSFSP-L2	Remote Handheld Sensor Configuration Tool
TLWSFSP-L3	360° lens, maximum coverage 48' diameter from 8' height
TLWSFSP-L4	360° lens, maximum coverage 40' diameter from 20' height
TLWSFSP-L7	360° lens, maximum coverage 60' diameter from 40' height
TLWSFSP-L7	360° lens, maximum coverage 100' diameter from 40' height

NOTES

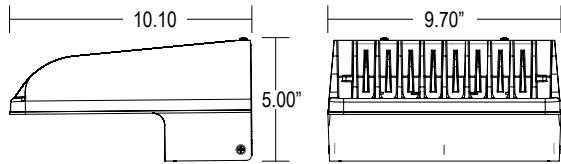
- 1 = Multi-Volt is an auto ranging power supply from 100V to 300V input.
- 2 = Custom RAL color matching is available. Contact your sales representative for additional info.
- 3 = Dimming feature must be ordered prior to manufacture of fixture and cannot be field installed.
- 4 = P1000PC operates at 120V only. For photocells to operate at additional voltages, please consult your local Techlight representative. Back Box Enclosure required for Button Photocell mounting.
- 5 = Additional IP66 rating may not be changed once production has begun on the fixtures.



LHMWP Full Cut Off Medium Heat Sink LED Wall Pack

AVAILABLE FIXTURE DIMENSIONS

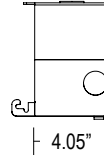
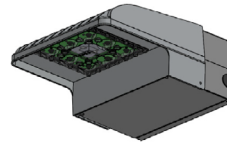
Dimensions shown are for fixture bodies only. Mounting options must be ordered separately.



Dimensions shown for 1 Brick Unit

ADDITIONAL FIXTURE ACCESSORIES

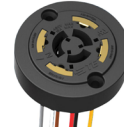
PMHSENC
Back Box Enclosure with Top and Side Conduit Entries



P1000PC
Button-Type Photocell



PCR7
7-Pin Twist-Lock Photocell Receptacle ANSI C136.41 and Receptacle Shorting Cap

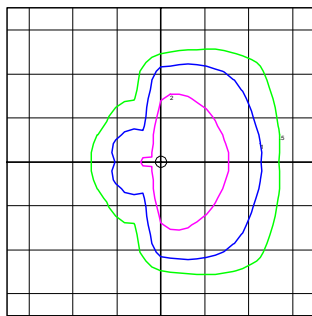


PHOTOMETRICS

**IES INDOOR REPORT
PHOTOMETRIC FILE
NAME: LHMWP1CYT3D**

**Type 3 Optical Assembly
1 Brick, 1050mA, Cool
White**

108W LHMWP LED
Color Temperature: 5,000 K



BUG Rating - FULL CUT OFF (Backlight, Uplight & Glare)

OPTIC TYPE	B (BACKLIGHT)	U (UPLIGHT)	G (GLARE)
TYPE II (T2)	1	0	2
TYPE III (T3)	3	0	2
TYPE IV (T4)	3	0	2

LUMINAIRE CHARACTERISTICS

# of LED Bricks	Drive Current	Color Temp	Delivered Lumens			System Wattage	L70 @ 25°C	Amperage Draw			
			TYPE II	TYPE III	TYPE IV			120V	208V	240V	277V
1 BRICK	525 mA	Cool White (5000K)	6721	6329	7058	54	>50K	0.45 A	0.26 A	0.23 A	0.19 A
1 BRICK	525 mA	Neutral White (4000K)	6560	6237	6888	54	>50K	0.45 A	0.26 A	0.23 A	0.19 A
1 BRICK	525 mA	Warm White (3000K)	6258	5863	6413	54	>50K	0.45 A	0.26 A	0.23 A	0.19 A
1 BRICK	700 mA	Cool White (5000K)	8668	8283	8763	72	>50K	0.60 A	0.35 A	0.30 A	0.26 A
1 BRICK	700 mA	Neutral White (4000K)	8459	8125	8718	72	>50K	0.60 A	0.35 A	0.30 A	0.26 A
1 BRICK	700 mA	Warm White (3000K)	8153	7489	8315	72	>50K	0.60 A	0.35 A	0.30 A	0.26 A
1 BRICK	1050 mA	Cool White (5000K)	12790	12442	13553	108	>50K	0.90 A	0.52 A	0.45 A	0.39 A
1 BRICK	1050 mA	Neutral White (4000K)	12697	12147	13481	108	>50K	0.90 A	0.52 A	0.45 A	0.39 A
1 BRICK	1050 mA	Warm White (3000K)	11992	11669	12680	108	>50K	0.90 A	0.52 A	0.45 A	0.39 A

WARNING: Maintenance performed including the replacement of LED bricks while power is still supplied to the luminaire may result in system failures and will void the warranty.



TECHLIGHT
INNOVATION IN ILLUMINATION