

LMSB SERIES

Medium Extruded LED Luminaire

Catalog Number	
Project	Type

FEATURES & SPECIFICATIONS

APPLICATION — The high performance luminaire is designed for applications where long life, low maintenance, and consistent color rendering is required. Areas with limited accessibility due to fixture location or where heavy pedestrian or vehicle traffic makes maintenance difficult are ideal applications such as parking lots or walkways. It is also compact and versatile enough for general purpose security lighting. The traditional design style of the luminaire allows it to be seamlessly integrated into existing systems if necessary.

CONSTRUCTION — The heavy duty housing is constructed of extruded aluminum. The optical assemblies are sealed in place using a silicone gasket for weather tight protection. Modular LED bricks wired in parallel for ease of maintenance. ETL listed for wet locations (IP64). Additional IP66 rating available upon request. Stainless steel hardware.

FINISH — A Super Durable Polyester powder coat finish is electrostatically applied in our state of the art paint facility. Standard colors available: Black, Bronze, US Green, White. Custom colors available upon request.

OPTICAL SYSTEM — Made with a state of the art UV stabilized acrylic high performance refractive optical assemblies that use high transmittivity materials to achieve precise photometric distributions. Available in Type II, III, IV, V Medium and V Wide beam configurations. Star Light Friendly (meets or exceeds Dark Sky requirements) in the horizontal position.

ELECTRICAL SYSTEM — Available in up to a 3 brick LED system in 5000K Cool White (+/- 500K) or 4100K Neutral White color temperatures (70 CRI min.) propagated with Philips Lumileds LUXEON® T LED's. Available with 90-300V 50/60 Hz Class II power supply. LED's rated over 425,000 hours (TM21 Calculated L70) at 25°C ambient temperature with 700mA operation. Lumen Maintenance >97% at 50K hrs. 347V and 480V input options available. Standard 0-10V dimming. Fixture provided with integral 10KV surge



SERIES	HOUSING HEIGHT	LENGTH & WIDTH	EPA (FT ²)
LMSB	6.72"	18.50" x 16.50"	1.7

protection that meets IEEE C62.42.2-2002. Built-in Active PFC Function. LED Power Supply conforms to UL1310 Class 2 and UL8750 standards and is IP67 rated for wet locations. Drive is compatible with ROAM lighting control system.

MOUNTING — Standard mounting options include 2", 8", and 10.75" straight arms, 2-3/8" ID Adjustable Slip Fitter for mounting on a standard 2-3/8" OD tenon, and an adjustable yoke mount. Additional mounting options may be available for custom applications.

LISTINGS — LED Power Supply listed for wet locations (IP67). LED bricks ETL listed for wet locations (IP64). Meets US and Canadian safety standards. -40°C to 50°C ambient operation. RoHS Compliant.

ORDERING INFORMATION

Choose the bold face options for the appropriate luminaire configuration for your application and enter on the line above each fixture attribute. Accessories may be factory installed, depending on the particular accessory chosen, but still be ordered as a separate line item.

EXAMPLE:

LMSB3C8T5WC1BZ

SERIES	# OF BRICKS	COLOR TEMP	# LED'S PER BRICK	OPTICS	DRIVE CURRENT	VOLTAGE	FINISH
LMSB	1 = 1 Brick 2 = 2 Brick 3 = 3 Brick	C = Cool White (5000K) N = Neutral White (4100K)	8 = 18 LEDs	T2 = Type II T3 = Type III T4 = Type IV T4A = Type IV Auto T5M = Type V Medium T5W = Type V Wide	C = 700 mA	1 = Multi-Volt ¹ 2 = 480V 3 = 347V	BZ = Bronze BK = Black GR = US Green WH = White SP = Special ²

ACCESSORIES (Order as separate line items)

- PTLJP-275** 7 Wire Twist-Lock Receptacle with Shorting Cap
- SSA-S³** Straight Arm Mount (2")
- SSA-M** Straight Arm Mount (8")
- SSA** Straight Arm Mount (10.75")
- 2AF** 2-3/8" ID Adjustable Slip Fitter
- MSBSY** Spider Yoke Mount
- B15** Adjustable Yoke Mount
- S129** Medium Vandal Shield
- S91** Medium 4 Sided Shield
- S94** Medium 3 Sided Back Side Shield
- S87** Medium Back Side Shield
- S90** Medium Short Back Side Shield
- WMSSA-S** Straight Arm Wall Mount (2")

- WMSSA-M** Straight Arm Wall Mount (8")
- WMSSA** Straight Arm Wall Mount (10.75")
- IP66⁴** Additional IP66 Fixture Rating
- LEDOPTIC-W** Spill Light Elimination
- LEDOPTIC-B** Spill Light Elimination "Black Out"

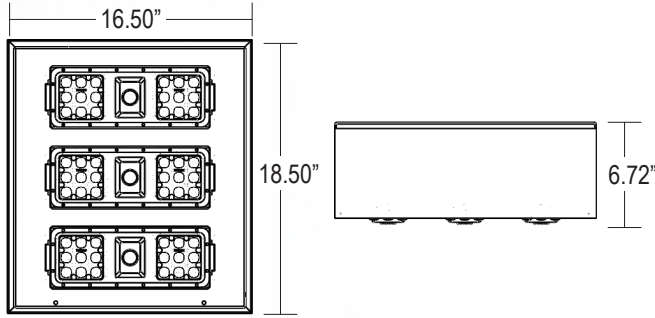
NOTES

- ¹ = Multi-Volt is an auto ranging power supply from 100V to 300V input.
- ² = Custom RAL color matching is available. Contact your sales representative for additional info.
- ³ = SSA-S Arm cannot be used when pole mounting fixtures at 90° increments.
- ⁴ = Additional IP66 rating may not be changed once production has begun on the fixtures.

LMSB Medium Extruded LED Luminaire

AVAILABLE FIXTURE DIMENSIONS

Dimensions shown are for fixture bodies only. Mounting options must be ordered separately.



MOUNTING ACCESSORIES

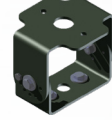
2AF
2-3/8" ID Adjustable Slip Fitter



MSBSY
Spider Yoke Mount



B15
Adjustable Yoke Mount



SSA-S¹, SSA-M, SSA
2", 8" and 10.75" Straight Arms



NOTES

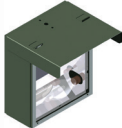
1 = SSA-S Arm cannot be used when pole mounting fixtures at 90° increments.

ADDITIONAL FIXTURE ACCESSORIES

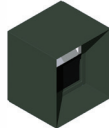
S87
Medium Back Side Shield



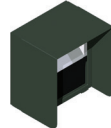
S90
Medium Short Back Side Shield



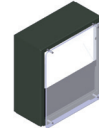
S91
Medium 4 Sided Shield



S94
Medium 3 Sided Back Side Shield



S129
Medium Vandal Shield



LUMINAIRE CHARACTERISTICS

Cool White (5000K) 700 mA Drive Current

# of LED Bricks	# of LEDs per Brick	Color Temp	Delivered Lumens						System Wattage	L70 @ 25°C	Amperage Draw					
			TYPE II	TYPE III	TYPE IV	TYPE 4A	TYPE 5M	TYPE 5W			120V	208V	240V	277V	347V	480V
1 BRICK	18	CW	4056	3993	4041	3992	4014	4065	41	>495K	.35 A	.20 A	.18 A	.15 A	.12 A	.09 A
			B2 U0 G1	B2 U0 G1	B2 U0 G1	B1 U0 G1	B2 U0 G1	B3 U0 G1								
2 BRICK	18	CW	8111	7987	8081	7983	8027	8130	81	>495K	.68 A	.39 A	.34 A	.30 A	.24 A	.17 A
			B3 U0 G2	B3 U0 G2	B3 U0 G2	B2 U0 G1	B3 U0 G1	B3 U0 G2								
3 BRICK	18	CW	12167	11980	12122	11975	12041	12195	122	>495K	1.02 A	.59 A	.51 A	.45 A	.36 A	.26 A
			B3 U0 G2	B3 U0 G2	B3 U0 G2	B3 U0 G1	B3 U0 G1	B4 U0 G2								

Neutral White (4100K) 700 mA Drive Current

# of LED Bricks	# of LEDs per Brick	Color Temp	Delivered Lumens						System Wattage	L70 @ 25°C	Amperage Draw					
			TYPE II	TYPE III	TYPE IV	TYPE 4A	TYPE 5M	TYPE 5W			120V	208V	240V	277V	347V	480V
1 BRICK	18	NW	3969	3908	3954	3906	3928	3978	41	>495K	.35 A	.20 A	.18 A	.15 A	.12 A	.09 A
			B2 U0 G1	B2 U0 G1	B2 U0 G1	B1 U0 G1	B2 U0 G1	B3 U0 G1								
2 BRICK	18	NW	7938	7816	7908	7813	7855	7956	81	>495K	.68 A	.39 A	.34 A	.30 A	.24 A	.17 A
			B3 U0 G2	B3 U0 G2	B3 U0 G2	B2 U0 G1	B3 U0 G1	B3 U0 G2								
3 BRICK	18	NW	11906	11724	11862	11719	11783	11934	122	>495K	1.02 A	.59 A	.51 A	.45 A	.36 A	.26 A
			B3 U0 G2	B3 U0 G2	B3 U0 G2	B3 U0 G1	B3 U0 G1	B4 U0 G2								

EPA Ratings (ft²)

Fixture Mounting Angles

0°	20°	60°
1.7	2.4	3.2

WARNING: Maintenance performed including the replacement of LED bricks while power is still supplied to the luminaire may result in system failures and will void the warranty.



2707 SATSUMA | DR. DALLAS, TX 75229 | PH: 800.225.0727 | FX: 214.350.0591 | www.techlightusa.com

All dimensions and specifications are subject to change without notice.

REV: 20170425-01