



DesignLights Consortium® Qualified. Please go to [www.designlights.org](http://www.designlights.org) for the current Qualified Products List. Further details about qualified models may be found under Family Models.

Catalog Number	
Project	Type

## FEATURES & SPECIFICATIONS

**APPLICATION** — The high performance luminaire is designed for area lighting applications where long life, low maintenance, and consistent color rendering is required. Areas with limited accessibility due to fixture location or where heavy pedestrian or vehicle traffic makes maintenance difficult are ideal applications such as parking lots or walkways. It is also compact and versatile enough for general purpose security lighting.

**CONSTRUCTION** — The heavy duty housing is constructed of extruded aluminum. The optical assemblies are sealed in place using a silicone gasket for weather tight protection. Modular LED bricks wired in parallel for ease of maintenance. ETL listed for wet locations (IP64). Additional IP66 rating available upon request.

**FINISH** — A Super Durable Polyester powder coat finish is electrostatically applied in our state of the art paint facility. Standard colors available: Black, Bronze, US Green, White. Custom colors available upon request.

**OPTICAL SYSTEM** — Made with a state of the art UV stabilized acrylic high performance refractive optical assemblies that use high transmissivity materials to achieve precise photometric distributions. Available in Type V Wide beam configuration. Star Light Friendly (meets or exceeds Dark Sky requirements) in the horizontal position.

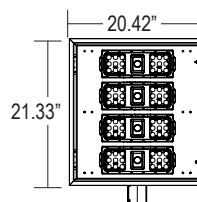
**ELECTRICAL SYSTEM** — Available in up to a 4 brick LED system in 5000K Cool White (+/- 500K) or 4100K Neutral White color temperatures (70 CRI min.) propagated with Philips Lumileds LUXEON® T LED's or Osram equivalent. Available with 90-300V 50/60 Hz Class II power supply. LED's rated over 355,000 hours (TM21 Calculated L70) at 25°C ambient temperature with selectable 700mA, 1050mA and 1400mA operation. Lumen Maintenance >97% at 50K hrs. 347V and 480V input options available. Standard 0-10V dimming. Fixture provided with integral 10kV surge protection that meets IEEE C62.42.2-2002. Built-in Active PFC Function. LED Power Supply conforms to UL1310 Class 2 and UL8750 standards and is IP67 rated for wet locations.

**MOUNTING** — Standard mounting options available are a 2" adjustable slip fitter for horizontal tenon mounting (see 2AF in the Accessories Section). Additional mounting options may be available for custom applications. **NOTE: An adaptor to provide a horizontal tenon must be utilized for slip fitter mounting.**

**LISTINGS** — LED Power Supply listed for wet locations (IP67). LED bricks ETL listed for wet locations (IP64). Meets US and Canadian safety standards. -40°C to 50°C ambient operation. RoHS Compliant.

**WARRANTY** — The complete luminaire is covered by a 5-year limited warranty.

## Saber LED Area/Flood Light, Knuckle Mount LSBR SERIES



Dimensions shown are for 4 Brick Unit Only. Mounting options must be ordered separately.

Series	Housing Height	Length & Width	EPA (ft <sup>2</sup> )
<b>LSBR</b>	4.75"	21.33" x 20.42"	0.65 for 4 Brick Unit



## ORDERING INFORMATION

Choose the bold face options for the appropriate luminaire configuration for your application and enter on the line above each fixture attribute. Accessories may be factory installed, depending on the particular accessory chosen, but still be ordered as a separate line item.

Example: **LSBR 4 C 8 T5W D 1 BZ 2AF**

**(NOTE: 2AF Slip Fitter Must Be Ordered Separately)**

Series	# of Bricks	Color Temp	# LED's per Brick	Optics	Drive Current	Voltage	Options	Finish
<b>LSBR</b>	<b>1</b> 1 Brick <b>2</b> 2 Brick <b>3</b> 3 Brick <b>4</b> 4 Brick	<b>C</b> Cool White (5000K) <b>N</b> Neutral White (4100K)	<b>8</b> 18 LED	<b>T5W</b> Type V Wide	<b>C</b> 700mA Driver <b>D</b> 1050mA Driver <b>F</b> 1400mA Driver	<b>1</b> Multi-Volt <sup>1</sup> <b>2</b> 480V <b>3</b> 347V	<b>L</b> Left Rotated Optics <b>R</b> Right Rotated Optics  (Leave Blank for standard optics)	<b>BK</b> Black <b>BZ</b> Bronze <b>GR</b> US Green <b>WH</b> White <b>SP</b> Special <sup>2</sup>

### Accessories (Order as separate line items)

<b>2AF</b>	2" Adjustable Slip Fitter	<b>RH2-16</b>	Horizontal Tenon Adaptor Dual In-Line
<b>TH190-16</b>	Horizontal Tenon Adaptor 1 @ 90° (16")	<b>IP66<sup>3</sup></b>	Additional IP66 Fixture Rating
<b>TH2180-16</b>	Horizontal Tenon Adaptor 2 @ 180° (16")	<b>LEDOPTIC-W</b>	Spill Light Elimination
<b>TH290-16</b>	Horizontal Tenon Adaptor 2 @ 90° (16")	<b>LEDOPTIC-B</b>	Spill Light Elimination "Black Out"
<b>TH390-16</b>	Horizontal Tenon Adaptor 3 @ 90° (16")	<b>S266</b>	Saber External Back Shield
<b>TH490-16</b>	Horizontal Tenon Adaptor 4 @ 90° (16")		
<b>TH3120-16</b>	Horizontal Tenon Adaptor 3 @ 120° (16")		
<b>TH190</b>	Horizontal Tenon Adaptor 1 @ 90° (4")		
<b>TH2180</b>	Horizontal Tenon Adaptor 2 @ 180° (4")		

#### NOTES

- Multi-Volt is an auto ranging power supply from 90V to 300V input.
- Custom RAL color matching is available. Contact your Techlight sale representative for additional information.
- Additional IP66 rating may not be changed once production has begun on the fixtures.

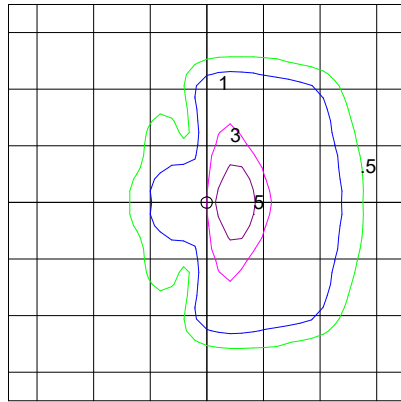
# LSBR Saber LED Area/Flood Light, Knuckle Mount

## PHOTOMETRICS

### IES INDOOR REPORT PHOTOMETRIC FILE NAME: LSBR-4-C-8-T3-D

Type III Optical Assembly  
4 Brick, 1050mA, Cool  
White

244W LSBR LED Flood Light  
Color Temperature: 5,000 K

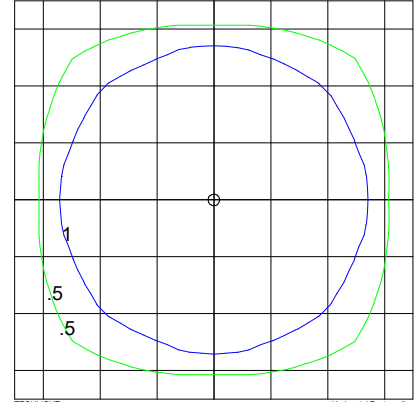


TECHLIGHT  
LSBR-4C8T3-D  
Horizontal Footcandles  
Scale: 1 Inch = 25 Ft.  
Light Loss Factor = 1.00  
Lumens Per Lamp = N.A. (absolute photometry)  
Luminaire Lumens = 22097  
Mounting Height = 25.00 Ft.  
Maximum Calculated Value = 7.22 Fc  
Arrangement: Single

### IES INDOOR REPORT PHOTOMETRIC FILE NAME: LSBR-4-C-8-T5W-F

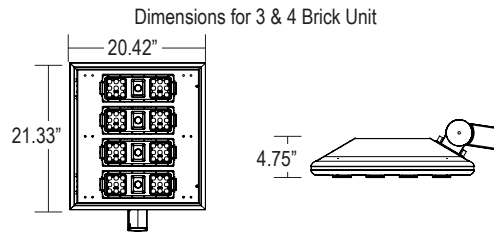
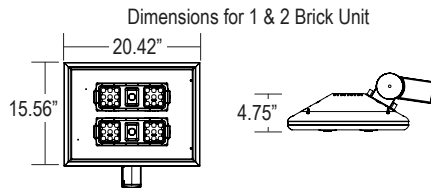
Type V Wide Optical  
Assembly  
4 Brick, 1400mA, Cool  
White

344W LSBR LED Area Light  
Color Temperature: 5,000 K

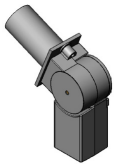


TECHLIGHT  
LSBR-4C8T5W-F  
Horizontal Footcandles  
Scale: 1 Inch = 25 Ft.  
Light Loss Factor = 1.00  
Lumens Per Lamp = N.A. (absolute photometry)  
Luminaire Lumens = 31701  
Mounting Height = 25.00 Ft.  
Maximum Calculated Value = 2.74 Fc  
Arrangement: Single

## ADDITIONAL FIXTURE DIMENSIONS



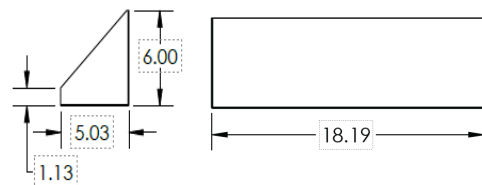
**2AF** (2-3/8" OD)  
Adjustable Tenon Mount Adaptor



**NOTE:** Fixtures shown here with the 2AF slip fitter are for example purposes only. The 2AF slip fitter must be ordered separately.

## ACCESSORY DIMENSIONS

S266 - Saber External Back Shield



# LSBR Saber LED Area/Flood Light, Knuckle Mount

## LUMINAIRE CHARACTERISTICS

### Cool White (5000K) 700 mA Drive Current

# of LED Bricks	# of LEDs per Brick	Color Temp	Delivered Lumens TYPE 5W	System Wattage	L70 @ 25°C	Amperage Draw					
						120V	208V	240V	277V	347V	480V
1 BRICK	18	CW	4065	41	>495K	0.35 A	0.21 A	0.18 A	0.16 A	0.13 A	0.09 A
2 BRICK	18	CW	8130	81	>495K	0.70 A	0.41 A	0.35 A	0.31 A	0.25 A	0.18 A
3 BRICK	18	CW	12195	122	>495K	1.05 A	0.61 A	0.53 A	0.46 A	0.37 A	0.27 A
4 BRICK	18	CW	16260	162	>495K	1.40 A	0.81 A	0.70 A	0.61 A	0.49 A	0.35 A

### Cool White (5000K) 1050 mA Drive Current

# of LED Bricks	# of LEDs per Brick	Color Temp	Delivered Lumens TYPE 5W	System Wattage	L70 @ 25°C	Amperage Draw					
						120V	208V	240V	277V	347V	480V
1 BRICK	18	CW	5518	61	>425K	0.53 A	0.31 A	0.27 A	0.23 A	0.19 A	0.14 A
2 BRICK	18	CW	11035	122	>425K	1.05 A	0.61 A	0.53 A	0.46 A	0.37 A	0.27 A
3 BRICK	18	CW	16553	183	>425K	1.58 A	0.91 A	0.79 A	0.69 A	0.55 A	0.40 A
4 BRICK	18	CW	22070	244	>425K	2.10 A	1.22 A	1.05 A	0.91 A	0.73 A	0.53 A

### Cool White (5000K) 1400 mA Drive Current

# of LED Bricks	# of LEDs per Brick	Color Temp	Delivered Lumens TYPE 5W	System Wattage	L70 @ 25°C	Amperage Draw					
						120V	208V	240V	277V	347V	480V
1 BRICK	18	CW	7948	86	>355K	0.72 A	0.42 A	0.36 A	0.32 A	0.25 A	0.18 A
2 BRICK	18	CW	15896	172	>355K	1.44 A	0.83 A	0.72 A	0.63 A	0.50 A	0.36 A
3 BRICK	18	CW	23844	258	>355K	2.15 A	1.25 A	1.08 A	0.94 A	0.75 A	0.54 A
4 BRICK	18	CW	31792	344	>355K	2.87 A	1.66 A	1.44 A	1.25 A	1.00 A	0.72 A

**WARNING:** Maintenance performed including the replacement of LED bricks while power is still supplied to the luminaire may result in system failures and will void the warranty.

## LUMINAIRE CHARACTERISTICS CONTINUED

### Neutral White (4100K) 700 mA Drive Current

# of LED Bricks	# of LEDs per Brick	Color Temp	Delivered Lumens TYPE 5W	System Wattage	L70 @ 25°C	Amperage Draw					
						120V	208V	240V	277V	347V	480V
1 BRICK	18	NW	3978	41	>495K	.35 A	.20 A	.18 A	.15 A	.12 A	.09 A
2 BRICK	18	NW	7956	81	>495K	.68 A	.39 A	.34 A	.30 A	.24 A	.17 A
3 BRICK	18	NW	11934	122	>495K	1.02 A	.59 A	.51 A	.45 A	.36 A	.26 A
4 BRICK	18	NW	15912	162	>495K	1.35 A	.78 A	.68 A	.59 A	.47 A	.34 A

### Neutral White (4100K) 1050 mA Drive Current

# of LED Bricks	# of LEDs per Brick	Color Temp	Delivered Lumens TYPE 5W	System Wattage	L70 @ 25°C	Amperage Draw					
						120V	208V	240V	277V	347V	480V
1 BRICK	18	NW	5400	61	>425K	.51 A	.30 A	.26 A	.23 A	.18 A	.13 A
2 BRICK	18	NW	10799	122	>425K	1.02 A	.59 A	.51 A	.45 A	.36 A	.26 A
3 BRICK	18	NW	16199	183	>425K	1.53 A	.88 A	.77 A	.67 A	.53 A	.39 A
4 BRICK	18	NW	21598	244	>425K	2.04 A	1.18 A	1.02 A	.89 A	.71 A	.51 A

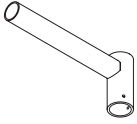
### Neutral White (4100K) 1400 mA Drive Current

# of LED Bricks	# of LEDs per Brick	Color Temp	Delivered Lumens TYPE 5W	System Wattage	L70 @ 25°C	Amperage Draw					
						120V	208V	240V	277V	347V	480V
1 BRICK	18	NW	6473	87	>355K	.73 A	.42 A	.37 A	.32 A	.26 A	.19 A
2 BRICK	18	NW	12945	174	>355K	1.45 A	.84 A	.73 A	.63 A	.51 A	.37 A
3 BRICK	18	NW	19421	261	>355K	2.18 A	1.26 A	1.09 A	.95 A	.76 A	.55 A
4 BRICK	18	NW	25889	348	>355K	2.90 A	1.68 A	1.45 A	1.26 A	1.01 A	.73 A

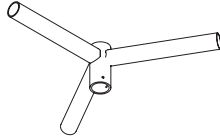
# LSBR Saber LED Area/Flood Light, Knuckle Mount

## MOUNTING ACCESSORIES

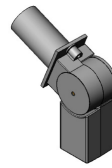
**TH190-16**  
Horizontal Tenon Adaptor 1 @ 90° (16")



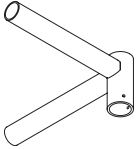
**TH3120-16**  
Horizontal Tenon Adaptor 3 @ 120° (16")



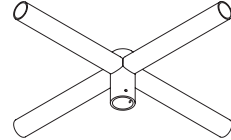
**2AF** (2-3/8" OD) [EPA 0.2]  
Adjustable Tenon Mount Adaptor



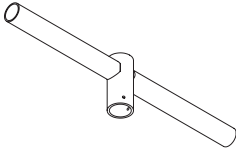
**TH290-16**  
Horizontal Tenon Adaptor 2 @ 90° (16")



**TH490-16**  
Horizontal Tenon Adaptor 4 @ 90° (16")



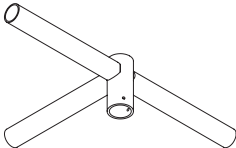
**TH2180-16**  
Horizontal Tenon Adaptor 2 @ 180° (16")



**TH190**  
Horizontal Tenon Adaptor 1 @ 90° (4")



**TH390-16**  
Horizontal Tenon Adaptor 3 @ 90° (16")



**TH290**  
Horizontal Tenon Adaptor 2 @ 90° (4")



**NOTE:** An adaptor to provide a horizontal tenon must be utilized for slip fitter mounting. Horizontal tenons measuring 16" must be utilized for mounting fixtures at 90 degree intervals.

## EPA RATINGS (ft<sup>2</sup>)

Tilt angle:	Saber Small (1-2 Brick Fixtures)							Saber Medium (3-4 Brick Fixtures)						
	0	20	30	45	60	70	90	0	20	30	45	60	70	90
190 - 1 fixture @ 90°	0.6	1	1.2	1.6	2	2.1	2.6	0.65	1.32	1.65	2.23	2.67	2.86	3.63
2180 - 2 fixtures @ 180°	1.3	2.1	2.5	3.3	4	4.2	5.3	1.4	2.7	3.4	4.5	5.4	5.8	7.3
290 - 2 fixtures @ 90°	1.2	1.5	1.8	2.2	2.5	2.6	3.2	1.4	2.1	2.4	3	3.4	3.6	4.4
390 - 3 fixtures @ 90°	1.6	2	2.2	2.6	2.9	3.1	3.6	2	2.7	3.1	3.6	4.1	4.3	5
3120 - 3 fixtures @ 120°	1.9	2.6	3	3.7	4.2	4.5	5.1	2.2	3.4	4	5	5.8	6.1	7
490 - 4 fixtures @ 90°	2.3	3	3.5	4.3	4.9	5.2	6.3	2.7	4.1	4.7	5.9	6.8	7.1	8.7



Techlight, Inc.  
2707 Satsuma Drive  
Dallas, TX, 75229  
Phone: 214-350-0591, 800-225-0727  
www.techlight.com