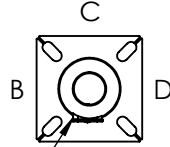




DRILLED PER FIXTURE REQUIREMENTS:
 DM1-DRILLED FOR 1 FIXTURE
 DM290 -DM2180-DRILLED FOR 2 FIXTURES AT 90° OR 180°
 DM390-DM3120-DRILLED FOR 3 FIXTURES AT 90° OR 120°
 D490-DRILLED FOR 4 FIXTURES



A
 3X5 HAND HOLE
 STD SIDE A

DRILLED MOUNT OPTIONS

Drilling Locations

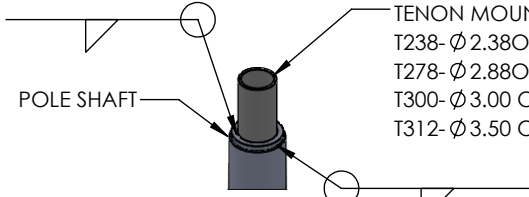
Sides	A	B	C	D
Hand Hole	X			
DM1	X			
DM290	X	X		
DM2180		X		X
DM390	X	X	X	X
DM490	X	X	X	X



POLE HEIGHT

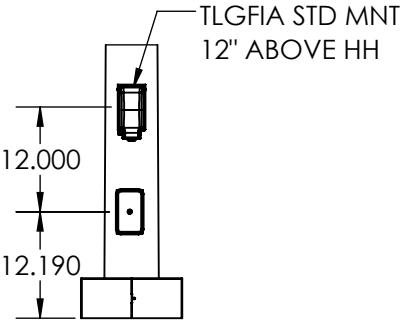
POLE DETAIL

POLE SPECIFICATIONS RTP20-11						
NO.	COMPONENT	ASTM SPEC	MIN. YIELD (PSI)			
1	POLE SHAFT	A1011-55	55,000			
2	BASE PLATE	A36	36,000			
3	ANCHOR BOLTS	F1554 GR 55	55,000			
4	ANCHOR BOLT HDW	A153	---			
FINISH SPECIFICATIONS						
IF GALV FINISH OPTION IS SPECIFIED POLE WILL BE HOT DIP GALVANIZED PER ASTM A123 SPECIFICATIONS. IF GALVP FINISH OPTION IS SPECIFIED POLE WILL BE HOT DIP GALVANIZED PER ASTM A123, THEN POWDER COATED WITH TEXTURED POLYESTER POWDER COAT ELECTROSTATICALLY APPLIED.						
IF POLYESTER POWDER COAT FINISH IS SPECIFIED POLE WILL BE SHOT BLASTED, WASHED, PRETREATED & DRIED THEN POWDER COAT WILL BE ELECTROSTATICALLY APPLIED PER AAMA 2604/2605 SPECIFICATIONS.						
POLE DIMENSIONS						
POLE HGT. (FT)	TOP DIA (IN)	BOTTOM DIA (IN)	STL GA			
20.0'	3.50"	6.30"	11 (.119)			
BASE PLATE DIMENSIONS						
BOLT CIRCLE DIA. (IN)	BASE PLATE (IN)	A/B HOLE WD (IN)	BASE PLATE THK (IN)			
RD1 9.75-12.25"	11.00 SQ	1.125"	1.00"			
ANCHOR BOLT DIMENSIONS						
ANCHOR BOLT DIA (IN)	ANCHOR BOLT LENGTH (IN)					
1.00"	36.00"					
ALLOWABLE WIND LOAD (SQ. FT)						
WIND	INDICATED EPA	100 MPH	110MPH	120MPH	130MPH	140MPH
EPA	---	20.4	16.2	13	10.6	8.7

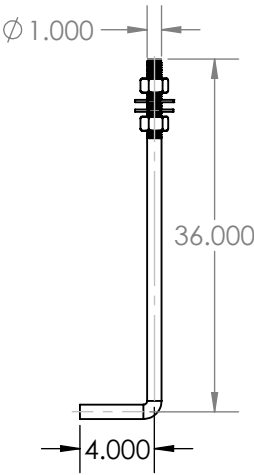


TENON MOUNT OPTIONS:
 T238-Ø 2.38ODX 4.00 LG
 T278-Ø 2.88OD X 4.00 LG
 T300-Ø 3.00 OD X 6.00 LG
 T312-Ø 3.50 OD X 6.00 LG

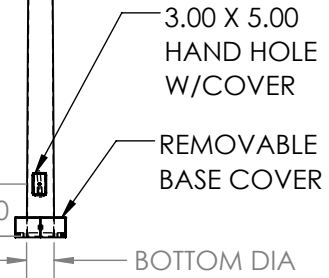
TENON MOUNT OPTIONS



TLGFA STD MOUNT



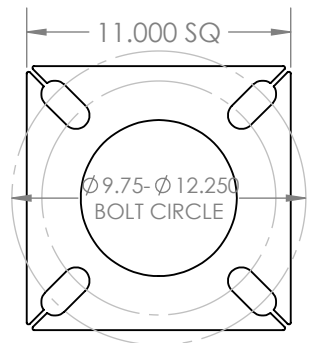
Ø 1.00 x 36.00 ANCHOR BOLT
 AB KIT REQ'D KAB136G11R



3.00 X 5.00
 HAND HOLE
 W/COVER
 REMOVABLE
 BASE COVER

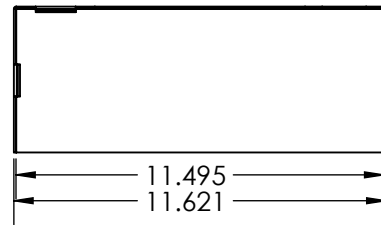
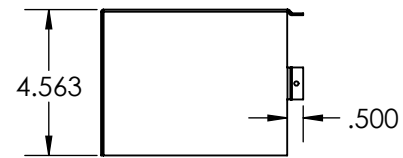
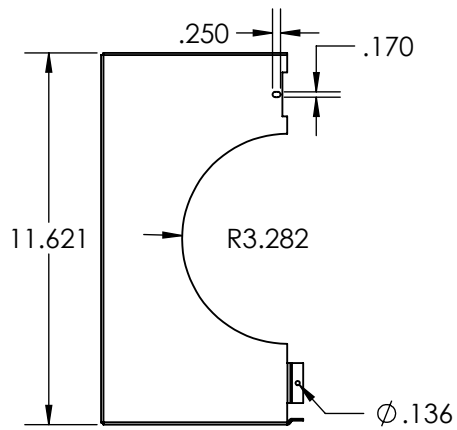


3.00 X 5.00 HAND HOLE COVER

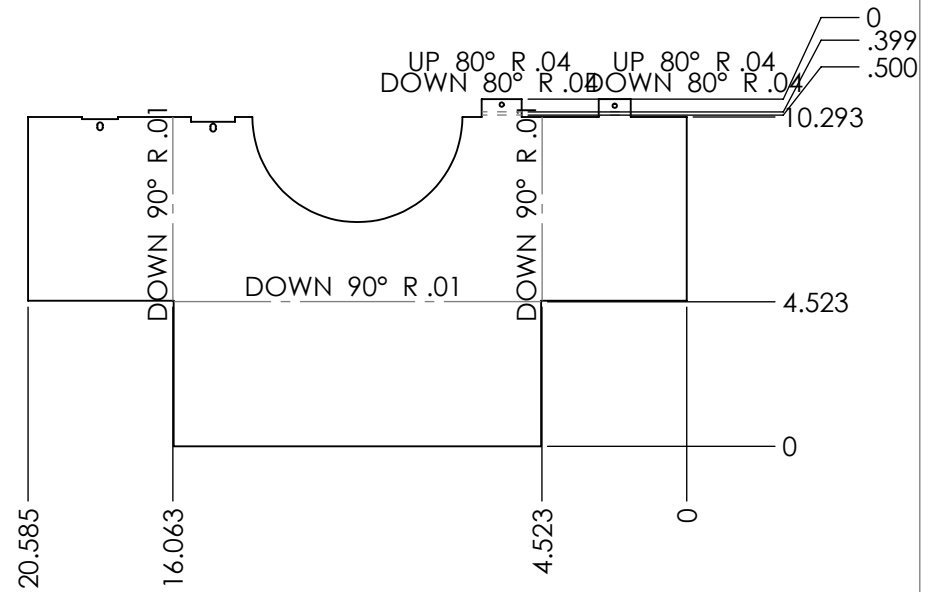
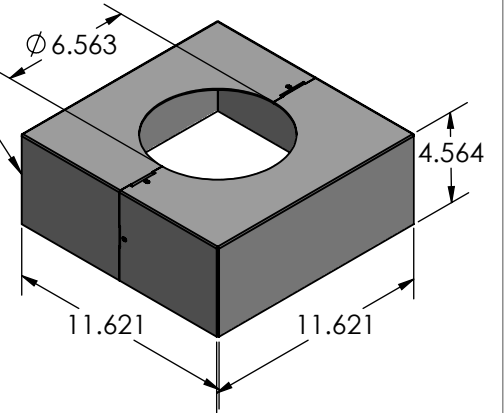


11.00 X 11.00 X 1.00 THK BASE PLATE

DESIGN PRM	DATE 5.22.26	SOLIDWORKS DRAWING UNLESS OTHERWISE SPECIFIED DIMENSIONS ARE IN INCHES DECIMALS ANGLE X.X = ±0.030 X.X = ±1.0° X.XX = ±0.010 X.XX = ±0.5° X.XXX = ±0.005 X.XXX = ±0.005 SURFACE 125/ X.XXXX = ±0.0005 FINISH FRACTION=±1/32	TECHLIGHT® WWW.TECHLIGHT.COM		THE INFORMATION CONTAINED IN THIS DRAWING IS THE SOLE PROPERTY OF TECHLIGHTUSA. ANY REPRODUCTION IN PART OR WHOLE WITHOUT THE WRITTEN PERMISSION OF TECHLIGHTUSA IS PROHIBITED.		
DRAWN PRM	DATE 5.22.26					DESCRIPTION RTP 20-11	
CHECKED	DATE		FINISH PAINT TO ORDER	MASS PROPERTIES DENSITY	SURFACE AREA	VOLUME	WEIGHT
APPROVED	DATE		MATERIAL #: STEEL	AMOUNT OF PAINT lbs/cu.in.	PART NO. RTP 20-11	SCALE 1:96	CAD FILE RTP20 Assy



TACK
ALL 4
CORNERS



ITEM NO.	PART NUMBER	DESCRIPTION	QTY.
1	PBCRTP20-11	BASE COVER	2
2	P838HWHSMS	SCREW 8-18 X 3/8 TEK	2

PROPRIETARY AND CONFIDENTIAL
THE INFORMATION CONTAINED IN THIS DRAWING IS THE SOLE PROPERTY OF WWW.TECHLIGHTUSA.COM ANY REPRODUCTION IN PART OR AS A WHOLE WITHOUT THE WRITTEN PERMISSION OF WWW.TECHLIGHTUSA.COM IS PROHIBITED.

DIMENSIONS ARE IN INCHES TOLERANCES: FRACTIONAL ± ANGULAR: MACH ± BEND ± TWO PLACE DECIMAL ± THREE PLACE DECIMAL ±		NAME	DATE	TECHLIGHT.COM	
CREATED			6.20.25		
CHECKED				PBCRTP20-11	
ENG APPR.					
MFG APPR.					
Q.A.					
NEXT ASSY	USED ON	FINISH		CONFIGURATION	
		PAINT TO ORDER		SIZE	DWG. NO.
APPLICATION		DO NOT SCALE DRAWING		A	PBCRTP20-11
				SCALE:1:8	WEIGHT:
				REV.	
				SHEET 2 OF 2	