

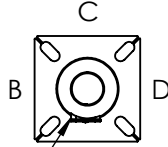


DRILLED PER FIXTURE REQUIREMENTS:
 DM1-DRILLED FOR 1 FIXTURE
 DM290 -DM2180-DRILLED FOR 2 FIXTURES AT 90° OR 180°
 DM390-DM3120-DRILLED FOR 3 FIXTURES AT 90° OR 120°
 D490-DRILLED FOR 4 FIXTURES

DRILLED MOUNT OPTIONS

Drilling Locations

Sides	A	B	C	D
Hand Hole	X			
DM1	X			
DM290	X	X		
DM2180		X		X
DM390	X	X	X	X
DM490	X	X	X	X



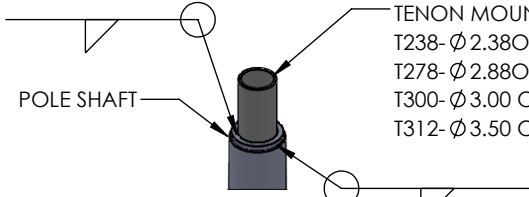
3X5 HAND HOLE
 STD SIDE A

TOP DIA

POLE HEIGHT

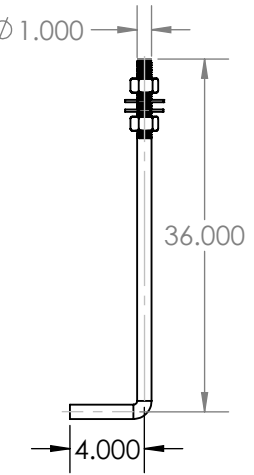
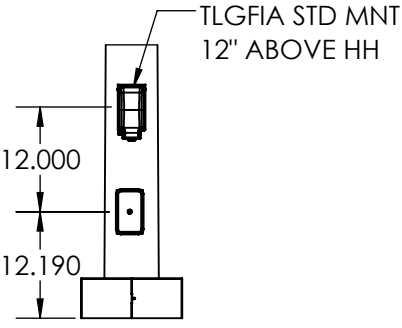
POLE DETAIL

POLE SPECIFICATIONS RTP24-11						
NO.	COMPONENT	ASTM SPEC	MIN. YIELD (PSI)			
1	POLE SHAFT	A1011-55	55,000			
2	BASE PLATE	A36	36,000			
3	ANCHOR BOLTS	F1554 GR 55	55,000			
4	ANCHOR BOLT HDW	A153	---			
FINISH SPECIFICATIONS						
IF GALV FINISH OPTION IS SPECIFIED POLE WILL BE HOT DIP GALVANIZED PER ASTM A123 SPECIFICATIONS. IF GALVP FINISH OPTION IS SPECIFIED POLE WILL BE HOT DIP GALVANIZED PER ASTM A123, THEN POWDER COATED WITH TEXTURED POLYESTER POWDER COAT ELECTROSTATICALLY APPLIED.						
IF POLYESTER POWDER COAT PAINT FINISH IS SPECIFIED POLE WILL BE SHOT BLASTED, WASHED, PRETREATED & DRIED THEN POWDER COAT WILL BE ELECTROSTATICALLY APPLIED PER AAMA 2604/2605 SPECIFICATIONS.						
POLE DIMENSIONS						
POLE HGT. (FT)	TOP DIA (IN)	BOTTOM DIA (IN)	STL GA			
24.0'	3.64"	7.00"	11 (.119)			
BASE PLATE DIMENSIONS						
BOLT CIRCLE DIA. (IN)	BASE PLATE (IN)	A/B HOLE WD (IN)	BASE PLATE THK (IN)			
RD170	9.75-12.25"	11.00 SQ	1.125"	1.00"		
ANCHOR BOLT DIMENSIONS						
ANCHOR BOLT DIA (IN)	ANCHOR BOLT LENGTH (IN)					
1.00"	36.00"					
ALLOWABLE WIND LOAD (SQ. FT)						
WIND	INDICATED EPA	100 MPH	110MPH	120MPH	130MPH	140MPH
EPA	---	17.9	14	11.1	8.8	7

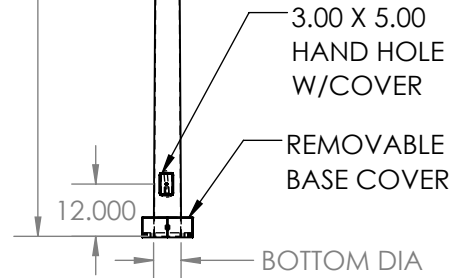


TENON MOUNT OPTIONS

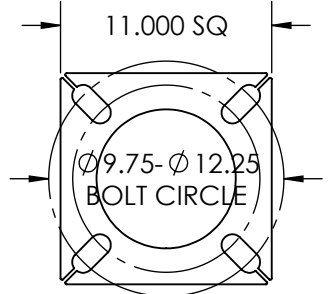
TENON MOUNT OPTIONS:
 T238-Ø2.38ODX 4.00 LG
 T278-Ø2.88OD X 4.00 LG
 T300-Ø3.00 OD X 6.00 LG
 T312-Ø3.50 OD X 6.00 LG



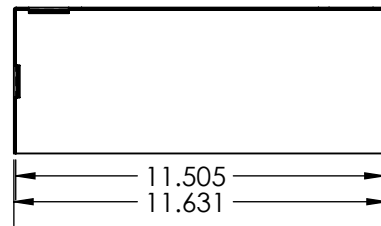
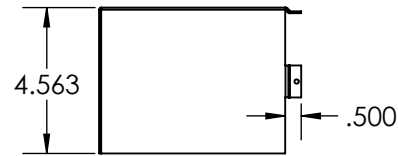
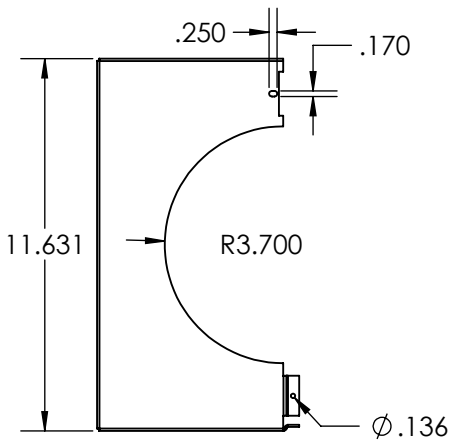
Ø 1.00 x 36.00 ANCHOR BOLT
 AB KIT REQ'D KAB136G11R



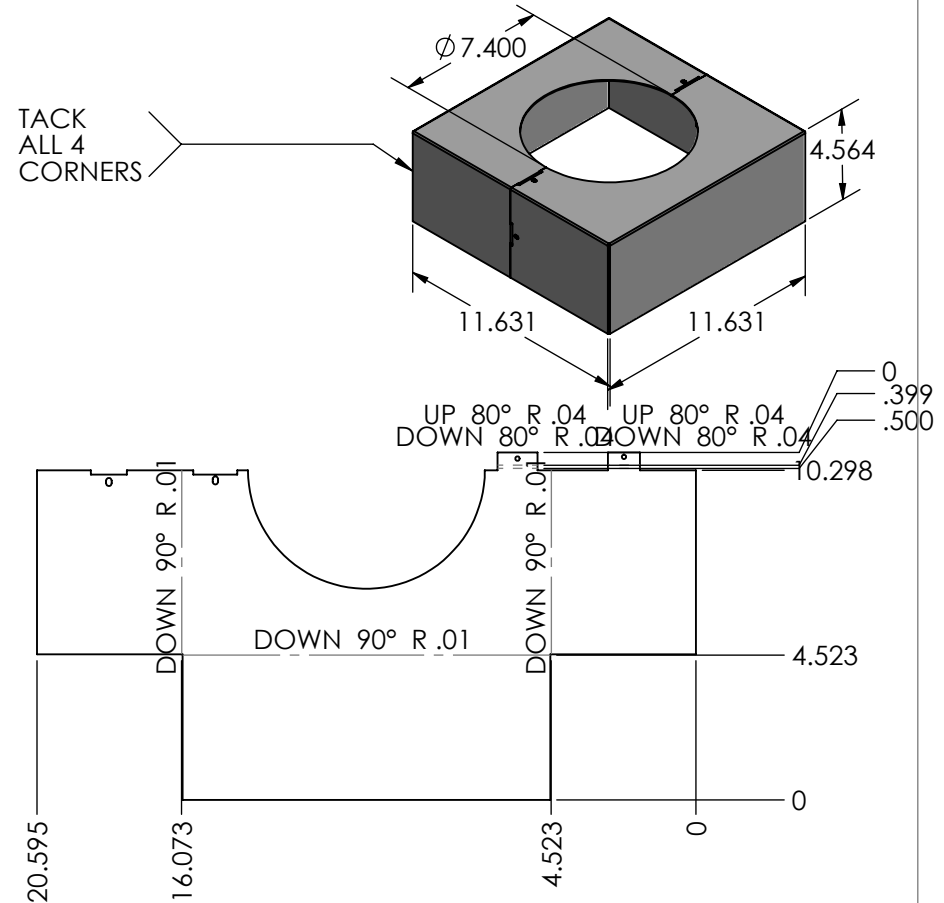
3.00 X 5.00 HAND HOLE COVER 11.00 X 11.00 X 1.00 THK BASE PLATE



DESIGN PRM	DATE 5.26.26	SOLIDWORKS DRAWING UNLESS OTHERWISE SPECIFIED DIMENSIONS ARE IN INCHES DECIMALS ANGLE X.X = ±0.030 X.X = ±1.0° X.XX = ±0.010 X.XX = ±0.5° X.XXX = ±0.005 X.XXX = ±0.005° X.XXXX = ±0.0005 FRACTION = ±1/32 SURFACE FINISH 125/✓	TECHLIGHT® WWW.TECHLIGHT.COM		THE INFORMATION CONTAINED IN THIS DRAWING IS THE SOLE PROPERTY OF TECHLIGHTUSA. ANY REPRODUCTION IN PART OR WHOLE WITHOUT THE WRITTEN PERMISSION OF TECHLIGHTUSA IS PROHIBITED.	
DRAWN PRM	DATE 5.26.26		DESCRIPTION RTP 24-11			
CHECKED	DATE		MASS PROPERTIES DENSITY SURFACE AREA VOLUME WEIGHT lbs/cu.in. sq.in. cu.in. lbs			
APPROVED	DATE		AMOUNT OF PAINT SIZE PART NO. lbs A RTP 24-11			
PAINT TO ORDER		DO NOT SCALE DRAWING		SCALE 1:96	CAD FILE RTP20 Assy	SHEET 1 OF 2



REVISIONS				
ZONE	REV.	DESCRIPTION	DATE	APPROVED
	A	REVD BEND DIMS	7/2/2025	PRM
	B	REVD BOM SCREW DESCRIPTION	5/26/2026	PRM



ITEM NO.	PART NUMBER	DESCRIPTION	QTY.
1	PBCRTP24 11	BASE COVER	2
2	P838HWHSMS	SCR 8-15X3/8 HWH SS 18-8	4

PROPRIETARY AND CONFIDENTIAL
 THE INFORMATION CONTAINED IN THIS DRAWING IS THE SOLE PROPERTY OF WWW.TECHLIGHTUSA.COM ANY REPRODUCTION IN PART OR AS A WHOLE WITHOUT THE WRITTEN PERMISSION OF WWW.TECHLIGHTUSA.COM IS PROHIBITED.

DIMENSIONS ARE IN INCHES TOLERANCES: FRACTIONAL ± ANGULAR: MACH ± BEND ± TWO PLACE DECIMAL ± THREE PLACE DECIMAL ±		NAME	DATE	TECHLIGHT.COM	
CREATED		7.2.25			
CHECKED				PBCRTP24 11	
ENG APPR.					
MFG APPR.					
Q.A.					
CONFIGURATION				PBCRTP24 11	
FINISH					
NEXT ASSY	USED ON			SIZE	DWG. NO.
				A	PBCRTP24 11
APPLICATION		DO NOT SCALE DRAWING		REV.	B
				SCALE:1:8	WEIGHT:
					SHEET 2 OF 2