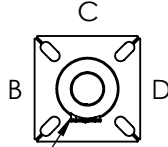




DRILLED PER FIXTURE REQUIREMENTS:
 DM1-DRILLED FOR 1 FIXTURE
 DM290 -DM2180-DRILLED FOR 2 FIXTURES AT 90° OR 180°
 DM390-DM3120-DRILLED FOR 3 FIXTURES AT 90° OR 120°
 D490-DRILLED FOR 4 FIXTURES

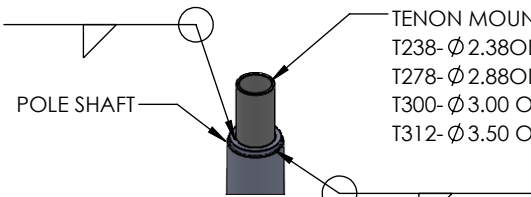


3X5 HAND HOLE
 STD SIDE A

DRILLED MOUNT OPTIONS

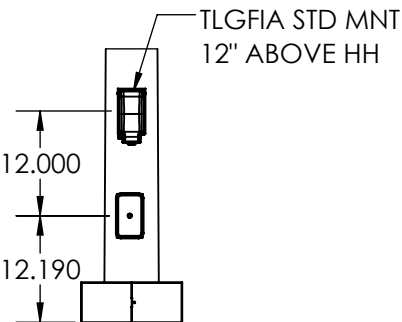
Drilling Locations

Sides	A	B	C	D
Hand Hole	X			
DM1	X			
DM290	X	X		
DM2180		X		X
DM390	X	X	X	X
DM490	X	X	X	X



TENON MOUNT OPTIONS

TENON MOUNT OPTIONS:
 T238-Ø 2.38OD X 4.00 LG
 T278-Ø 2.88OD X 4.00 LG
 T300-Ø 3.00 OD X 6.00 LG
 T312-Ø 3.50 OD X 6.00 LG



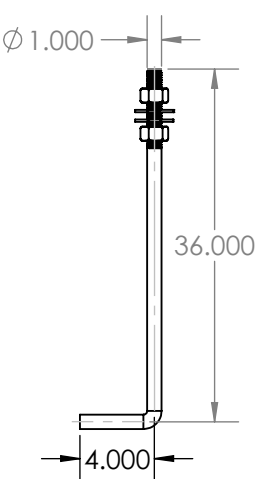
TLGFA STD MOUNT

POLE HEIGHT



POLE DETAIL

POLE SPECIFICATIONS RTP24-7					
NO.	COMPONENT	ASTM SPEC	MIN. YIELD (PSI)		
1	POLE SHAFT	A572 GD65	65,000		
2	BASE PLATE	A36	36,000		
3	ANCHOR BOLTS	F1554 GR 55	55,000		
4	ANCHOR BOLT HDW	A153	---		
FINISH SPECIFICATIONS					
IF GALV FINISH OPTION IS SPECIFIED POLE WILL BE HOT DIP GALVANIZED PER ASTM A123 SPECIFICATIONS. IF GALVP FINISH OPTION IS SPECIFIED POLE WILL BE HOT DIP GALVANIZED PER ASTM A123, THEN POWDER COATED WITH TEXTURED POLYESTER POWDER COAT ELECTROSTATICALLY APPLIED. IF POLYESTER POWDER COAT PAINT FINISH IS SPECIFIED POLE WILL BE SHOT BLASTED, WASHED, PRETREATED & DRIED THEN POWDER COAT WILL BE ELECTROSTATICALLY APPLIED PER AAMA 2604/2605 SPECIFICATIONS.					
POLE DIMENSIONS					
POLE HGT. (FT)		TOP DIA (IN)	BOTTOM DIA (IN)	STL GA	
24.0'		4.00"	7.36"	7 (.188)	
BASE PLATE DIMENSIONS					
BOLT CIRCLE DIA. (IN)		BASE PLATE (IN)	A/B HOLE WD (IN)	BASE PLATE THK (IN)	
RD128 9.75-12.25"		11.00 SQ	1.125"	1.00"	
ANCHOR BOLT DIMENSIONS					
ANCHOR BOLT DIA (IN)		ANCHOR BOLT LENGTH (IN)			
1.00"		36.00"			
ALLOWABLE WIND LOAD (SQ. FT)					
WIND	INDICATED EPA	100 MPH	110MPH	120MPH	130MPH
EPA	---	33.1	26.5	21.5	17.6



Ø 1.00 x 36.00 ANCHOR BOLT
 AB KIT REQ'D KAB136G11R

DESIGN	DATE	5.26.26
PRM	DATE	5.26.26
DRAWN	DATE	5.26.26
PRM	DATE	5.26.26
CHECKED	DATE	
APPROVED	DATE	

SOLIDWORKS DRAWING
 UNLESS OTHERWISE SPECIFIED
 DIMENSIONS ARE IN INCHES

DECIMALS ANGLE
 X.X = ±0.030 X.X = ±1.0°
 X.XX = ±0.010 X.XX = ±0.5°
 X.XXX = ±0.005
 X.XXXX = ±0.0005
 FRACTION = ±1/32

SURFACE 125/
 FINISH

PAINT TO ORDER

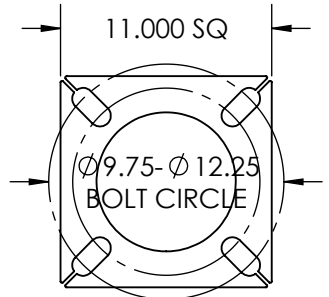
MATERIAL #: STEEL
 MATERIAL:
 MATERIAL SIZE:



3.00 X 5.00
 HAND HOLE
 W/COVER

REMOVABLE
 BASE COVER

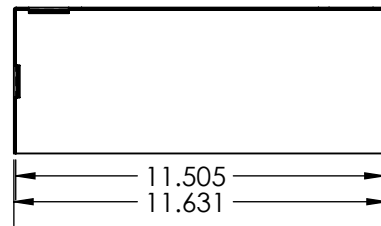
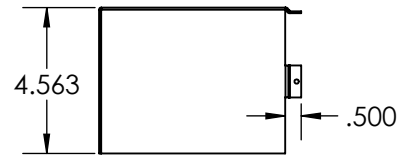
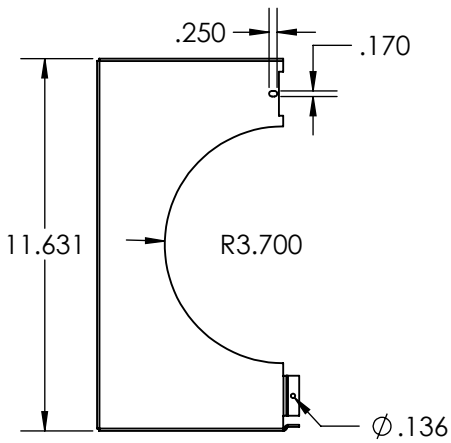
3.00 X 5.00 HAND HOLE COVER 11.00 X 11.00 X 1.00 THK BASE PLATE



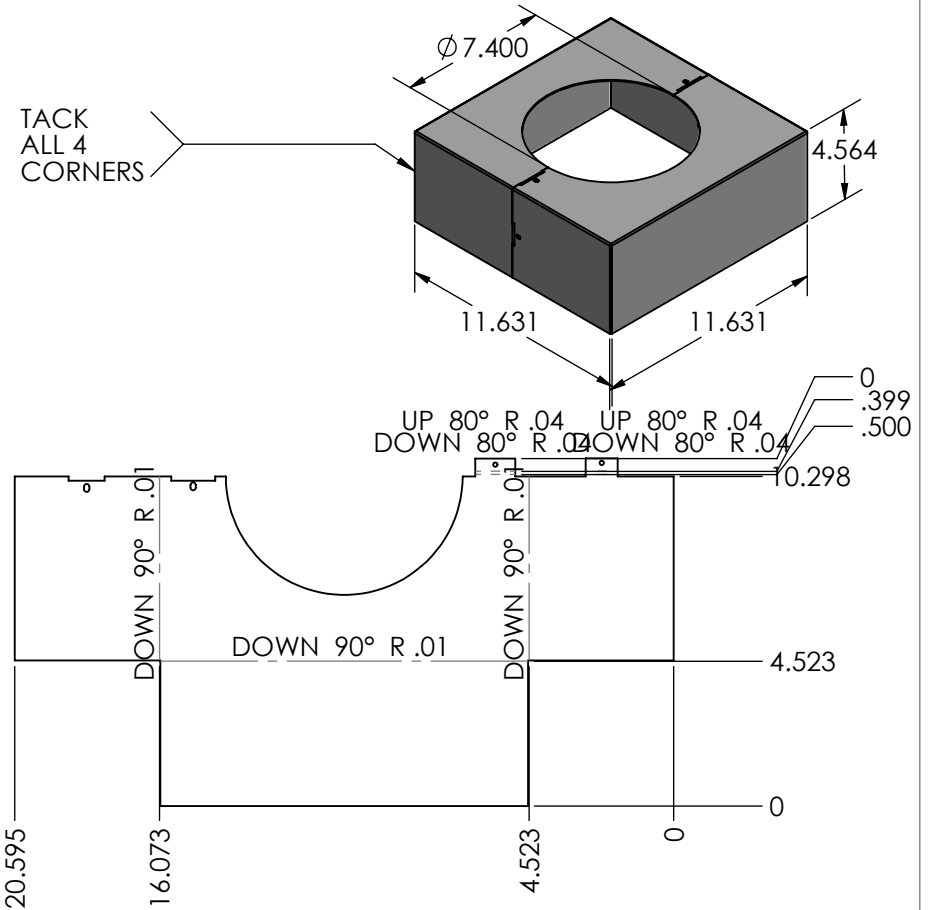
TECHLIGHT®
 WWW.TECHLIGHT.COM

THE INFORMATION CONTAINED IN THIS DRAWING IS THE SOLE PROPERTY OF TECHLIGHTUSA. ANY REPRODUCTION IN PART OR WHOLE WITHOUT THE WRITTEN PERMISSION OF TECHLIGHTUSA IS PROHIBITED.

DESCRIPTION						RTP 24-7					
MASS PROPERTIES		SURFACE AREA		VOLUME		WEIGHT					
DENSITY		sq.in.		cu.in.		cu.in.		lbs		lbs	
AMOUNT OF PAINT		PART NO.		RTP 24-7		REV.					
DO NOT SCALE DRAWING		SCALE 1:96		CAD FILE RTP20 Assy		SHEET 1		OF 2			



REVISIONS				
ZONE	REV.	DESCRIPTION	DATE	APPROVED
	A	REVD BEND DIMS	7/2/2025	PRM
	B	REVD BOM SCREW DESCRIPTION	5/26/2026	PRM



ITEM NO.	PART NUMBER	DESCRIPTION	QTY.
1	PBCRTP24 11	BASE COVER	2
2	P838HWHSMS	SCR 8-15X3/8 HWH SS 18-8	4

PROPRIETARY AND CONFIDENTIAL
 THE INFORMATION CONTAINED IN THIS DRAWING IS THE SOLE PROPERTY OF WWW.TECHLIGHTUSA.COM ANY REPRODUCTION IN PART OR AS A WHOLE WITHOUT THE WRITTEN PERMISSION OF WWW.TECHLIGHTUSA.COM IS PROHIBITED.

DIMENSIONS ARE IN INCHES TOLERANCES: FRACTIONAL ± ANGULAR: MACH ± BEND ± TWO PLACE DECIMAL ± THREE PLACE DECIMAL ±		NAME	DATE	TECHLIGHT.COM	
CREATED	7.2.25	CHECKED			
ENG APPR.		MFG APPR.		PBCRTP24 11	
Q.A.		CONFIGURATION			
NEXT ASSY	USED ON	FINISH	PAINT TO ORDER		SIZE A
APPLICATION	DO NOT SCALE DRAWING			DWG. NO. PBCRTP24 11	REV. B
			SCALE:1:8	WEIGHT:	SHEET 2 OF 2