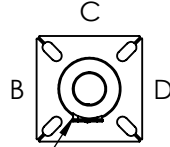




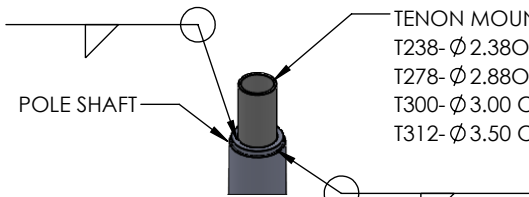
DRILLED PER FIXTURE REQUIREMENTS:
 DM1-DRILLED FOR 1 FIXTURE
 DM290 -DM2180-DRILLED FOR 2 FIXTURES AT 90° OR 180°
 DM390-DM3120-DRILLED FOR 3 FIXTURES AT 90° OR 120°
 D490-DRILLED FOR 4 FIXTURES



3X5 HAND HOLE
 STD SIDE A

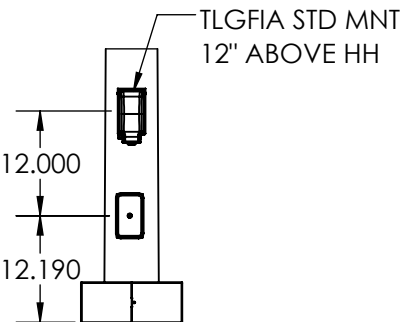
DRILLED MOUNT OPTIONS

Drilling Locations				
Sides	A	B	C	D
Hand Hole	X			
DM1	X			
DM290	X	X		
DM2180		X		X
DM390	X	X	X	X
DM490	X	X	X	X

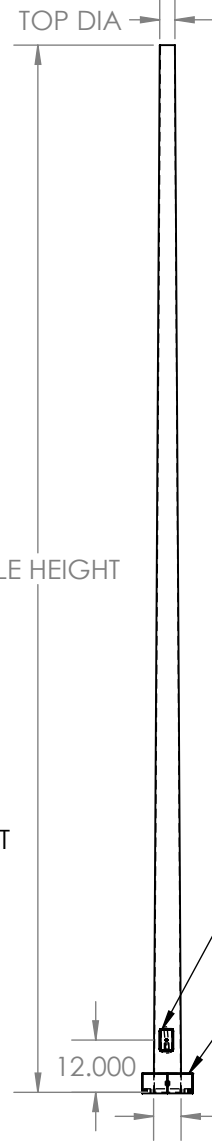


TENON MOUNT OPTIONS:
 T238-Ø 2.38ODX 4.00 LG
 T278-Ø 2.88OD X 4.00 LG
 T300-Ø 3.00 OD X 6.00 LG
 T312-Ø 3.50 OD X 6.00 LG

TENON MOUNT OPTIONS

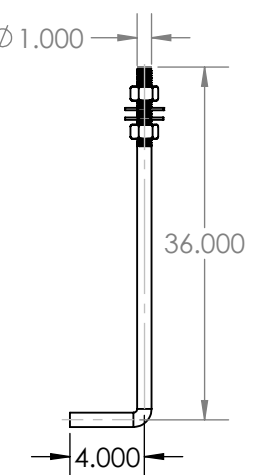


TLGFA STD MOUNT



POLE DETAIL

POLE SPECIFICATIONS RTP25-7					
NO.	COMPONENT	ASTM SPEC	MIN. YIELD (PSI)		
1	POLE SHAFT	A572 GD65	65,000		
2	BASE PLATE	A36	36,000		
3	ANCHOR BOLTS	F1554 GR 55	55,000		
4	ANCHOR BOLT HDW	A153	---		
FINISH SPECIFICATIONS					
IF GALV FINISH OPTION IS SPECIFIED POLE WILL BE HOT DIP GALVANIZED PER ASTM A123 SPECIFICATIONS. IF GALVP FINISH OPTION IS SPECIFIED POLE WILL BE HOT DIP GALVANIZED PER ASTM A123, THEN POWDER COATED WITH TEXTURED POLYESTER POWDER COAT ELECTROSTATICALLY APPLIED. IF POLYESTER POWDER COAT PAINT FINISH IS SPECIFIED POLE WILL BE SHOT BLASTED, WASHED, PRETREATED & DRIED THEN POWDER COAT WILL BE ELECTROSTATICALLY APPLIED PER AAMA 2604/2605 SPECIFICATIONS.					
POLE DIMENSIONS					
POLE HGT. (FT)	TOP DIA (IN)	BOTTOM DIA (IN)	STL GA		
25.0'	3.50"	7.00"	7 (.188)		
BASE PLATE DIMENSIONS					
BOLT CIRCLE DIA. (IN)	BASE PLATE (IN)	A/B HOLE WD (IN)	BASE PLATE THK (IN)		
RD170	9.75-12.25"	11.00 SQ	1.125"	1.00"	
ANCHOR BOLT DIMENSIONS					
ANCHOR BOLT DIA (IN)	ANCHOR BOLT LENGTH (IN)				
1.00"	36.00"				
ALLOWABLE WIND LOAD (SQ. FT)					
WIND	INDICATED EPA	100 MPH	110MPH	120MPH	130MPH 140MPH
EPA	---	22.6	18.2	14.8	12.2 10



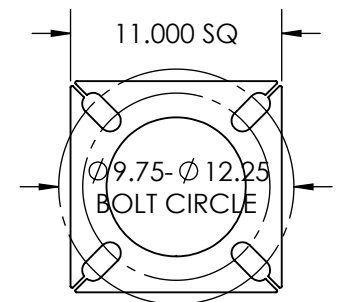
Ø 1.00 x 36.00 ANCHOR BOLT
AB KIT REQ'D KAB136G11R

3.00 X 5.00
 HAND HOLE
 W/COVER

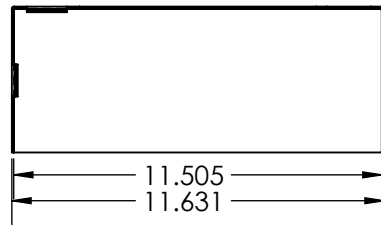
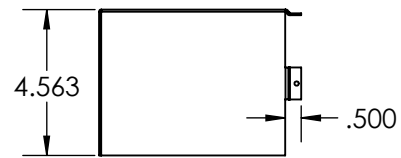
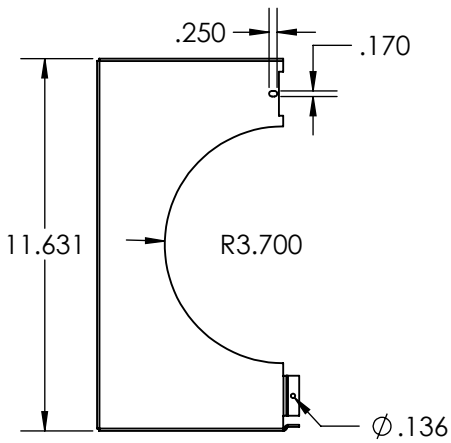
REMOVABLE
 BASE COVER



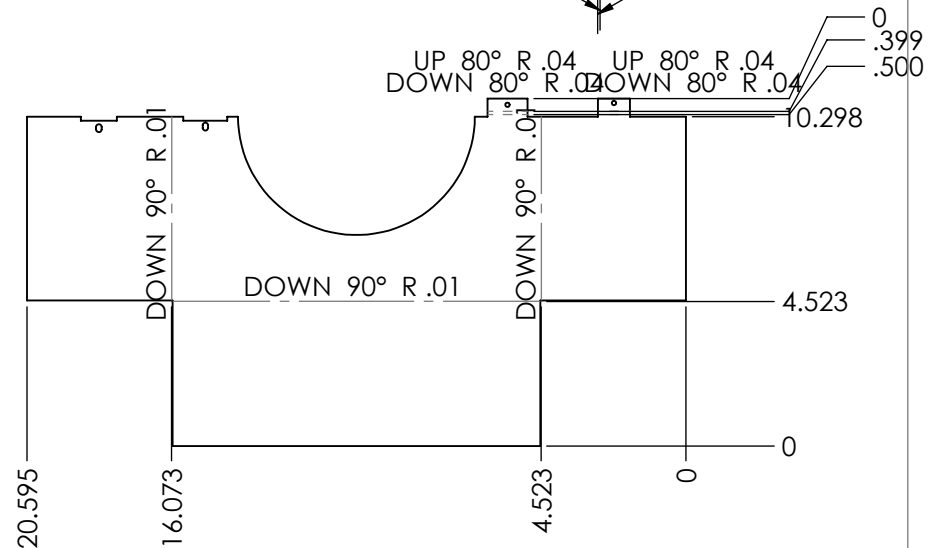
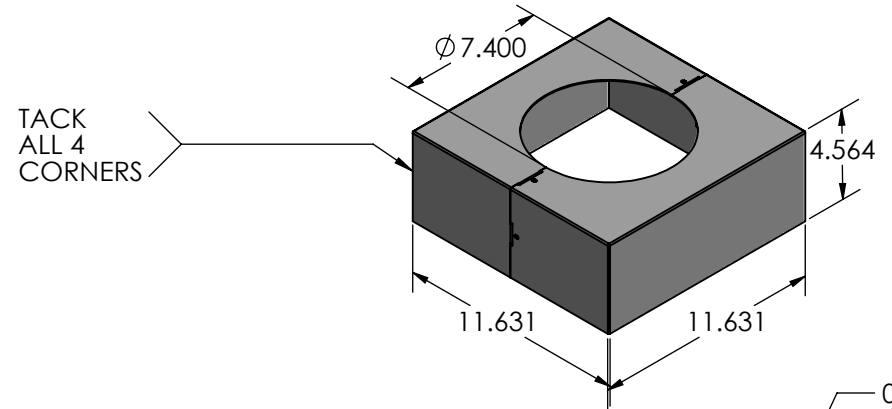
3.00 X 5.00 HAND HOLE COVER 11.00 X 11.00 X 1.00 THK BASE PLATE



DESIGN PRM	DATE 5.26.26	SOLIDWORKS DRAWING <small>UNLESS OTHERWISE SPECIFIED DIMENSIONS ARE IN INCHES</small> DECIMALS X.X = ±0.030 ANGLE X.X = ±1.0° X.XX = ±0.010 X.XX = ±0.5° X.XXX = ±0.005 X.XXX = ±0.005 SURFACE 125/ X.XXXX = ±0.0005 FRACTION=±1/32 FINISH ✓	TECHLIGHT® WWW.TECHLIGHT.COM		THE INFORMATION CONTAINED IN THIS DRAWING IS THE SOLE PROPERTY OF TECHLIGHTUSA. ANY REPRODUCTION IN PART OR WHOLE WITHOUT THE WRITTEN PERMISSION OF TECHLIGHTUSA IS PROHIBITED.		
DRAWN PRM	DATE 5.26.26					DESCRIPTION RTP 25-7	
CHECKED	DATE		FINISH PAINT TO ORDER	MASS PROPERTIES DENSITY	SURFACE AREA	VOLUME	WEIGHT
APPROVED	DATE		MATERIAL #: STEEL	AMOUNT OF PAINT lbs/cu.in.	PART NO. RTP 25-7	SCALE 1:96	CAD FILE RTP20 Assy



REVISIONS				
ZONE	REV.	DESCRIPTION	DATE	APPROVED
	A	REVD BEND DIMS	7/2/2025	PRM
	B	REVD BOM SCREW DESCRIPTION	5/26/2026	PRM



ITEM NO.	PART NUMBER	DESCRIPTION	QTY.
1	PBCRTP24 11	BASE COVER	2
2	P838HWHSMS	SCR 8-15X3/8 HWH SS 18-8	4

PROPRIETARY AND CONFIDENTIAL
 THE INFORMATION CONTAINED IN THIS DRAWING IS THE SOLE PROPERTY OF WWW.TECHLIGHTUSA.COM ANY REPRODUCTION IN PART OR AS A WHOLE WITHOUT THE WRITTEN PERMISSION OF WWW.TECHLIGHTUSA.COM IS PROHIBITED.

DIMENSIONS ARE IN INCHES		NAME	DATE	TECHLIGHT.COM	
TOLERANCES:		CREATED	7.2.25		
FRACTIONAL ±		CHECKED		PBCRTP24 11	
ANGULAR: MACH ± BEND ±		ENG APPR.			
TWO PLACE DECIMAL ±		MFG APPR.			
THREE PLACE DECIMAL ±		Q.A.			
MATERIAL		CONFIGURATION		PBCRTP24 11	
RMA063					
FINISH				SIZE	DWG. NO.
PAINT TO ORDER				A	PBCRTP24 11
APPLICATION		DO NOT SCALE DRAWING		SCALE:1:8	WEIGHT:
				SHEET 2 OF 2	