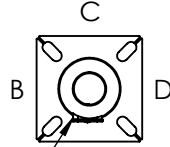




DRILLED PER FIXTURE REQUIREMENTS:
 DM1-DRILLED FOR 1 FIXTURE
 DM290 -DM2180-DRILLED FOR 2 FIXTURES AT 90° OR 180°
 DM390-DM3120-DRILLED FOR 3 FIXTURES AT 90° OR 120°
 D490-DRILLED FOR 4 FIXTURES



3X5 HAND HOLE
 STD SIDE A

DRILLED MOUNT OPTIONS

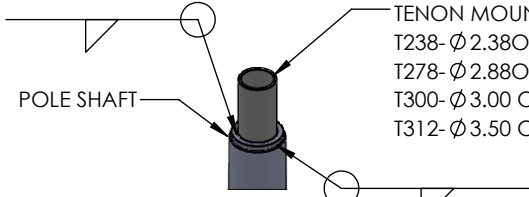
Drilling Locations				
Sides	A	B	C	D
Hand Hole	X			
DM1	X			
DM290	X	X		
DM2180		X		X
DM390	X	X		X
DM490	X	X	X	X

TOP DIA

POLE HEIGHT

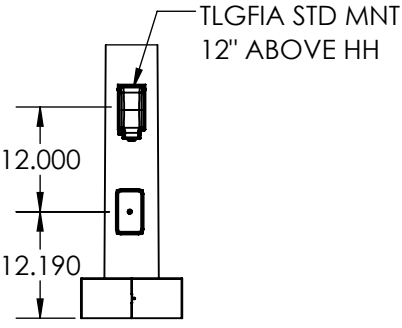
BOTTOM DIA

POLE SPECIFICATIONS RTP30-11					
NO.	COMPONENT	ASTM SPEC	MIN. YIELD (PSI)		
1	POLE SHAFT	A1011-55	55,000		
2	BASE PLATE	A36	36,000		
3	ANCHOR BOLTS	F1554 GR 55	55,000		
4	ANCHOR BOLT HDW	A153	---		
FINISH SPECIFICATIONS					
IF GALV FINISH OPTION IS SPECIFIED POLE WILL BE HOT DIP GALVANIZED PER ASTM A123 SPECIFICATIONS. IF GALVP FINISH OPTION IS SPECIFIED POLE WILL BE HOT DIP GALVANIZED PER ASTM A123, THEN POWDER COATED WITH TEXTURED POLYESTER POWDER COAT ELECTROSTATICALLY APPLIED. IF POLYESTER POWDER COAT PAINT FINISH IS SPECIFIED POLE WILL BE SHOT BLASTED, WASHED, PRETREATED & DRIED THEN POWDER COAT WILL BE ELECTROSTATICALLY APPLIED PER AAMA 2604/2605 SPECIFICATIONS.					
POLE DIMENSIONS					
POLE HGT. (FT)		TOP DIA (IN)	BOTTOM DIA (IN)	STL GA	
30.0'		3.50"	7.63"	11 (.119)	
BASE PLATE DIMENSIONS					
BOLT CIRCLE DIA. (IN)		BASE PLATE (IN)	A/B HOLE WD (IN)	BASE PLATE THK (IN)	
RD171 9.83-12.25"		11.00 SQ	1.25"	1.00"	
ANCHOR BOLT DIMENSIONS					
ANCHOR BOLT DIA (IN)		ANCHOR BOLT LENGTH (IN)			
1.00"		36.00"			
ALLOWABLE WIND LOAD (SQ. FT)					
WIND	INDICATED EPA	100 MPH	110MPH	120MPH	130MPH 140MPH
EPA	---	14.4	10.9	8.3	6.3 4.6

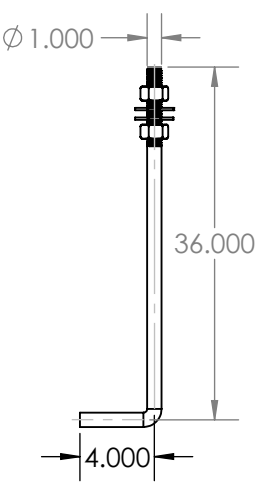


TENON MOUNT OPTIONS:
 T238-Ø 2.38ODX 4.00 LG
 T278-Ø 2.88OD X 4.00 LG
 T300-Ø 3.00 OD X 6.00 LG
 T312-Ø 3.50 OD X 6.00 LG

TENON MOUNT OPTIONS



TLGFA STD MOUNT

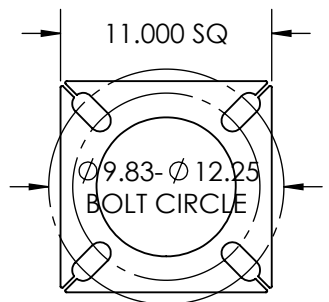


Ø 1.00 x 36.00 ANCHOR BOLT
 AB KIT REQ'D KAB136G11R

POLE DETAIL

3.00 X 5.00
 HAND HOLE
 W/COVER

REMOVABLE
 BASE COVER



3.00 X 5.00 HAND HOLE COVER 11.00 X 11.00 X 1.00 THK BASE PLATE

DESIGN	DATE
PRM	5.29.26
DRAWN	DATE
PRM	5.29.26
CHECKED	DATE
APPROVED	DATE

SOLIDWORKS DRAWING
 UNLESS OTHERWISE SPECIFIED
 DIMENSIONS ARE IN INCHES

DECIMALS	ANGLE
X.X = ±0.030	X.X = ±1.0°
X.XX = ±0.010	X.XX = ±0.5°
X.XXX = ±0.005	
X.XXXX = ±0.0005	
FRACTION = ±1/32	

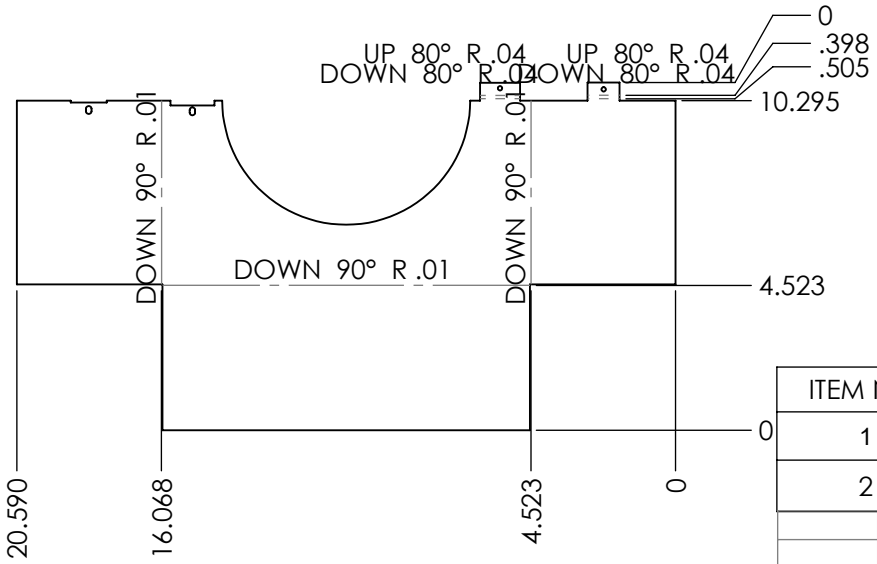
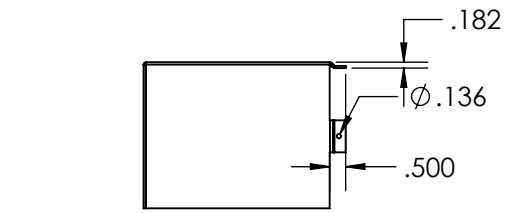
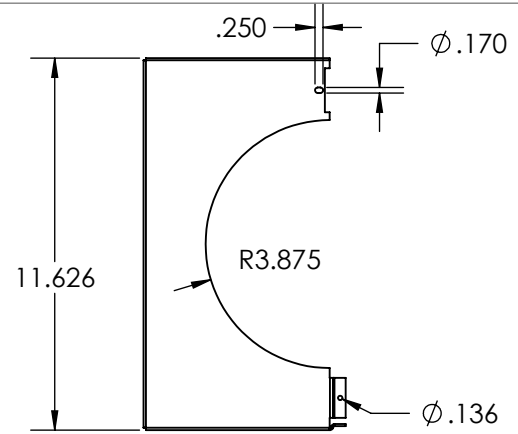
SURFACE 125/ FINISH

TECHLIGHT®
 WWW.TECHLIGHT.COM

THE INFORMATION CONTAINED IN THIS DRAWING IS THE SOLE PROPERTY OF TECHLIGHTUSA. ANY REPRODUCTION IN PART OR WHOLE WITHOUT THE WRITTEN PERMISSION OF TECHLIGHTUSA IS PROHIBITED.

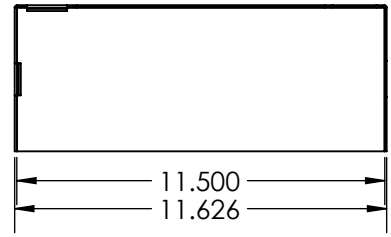
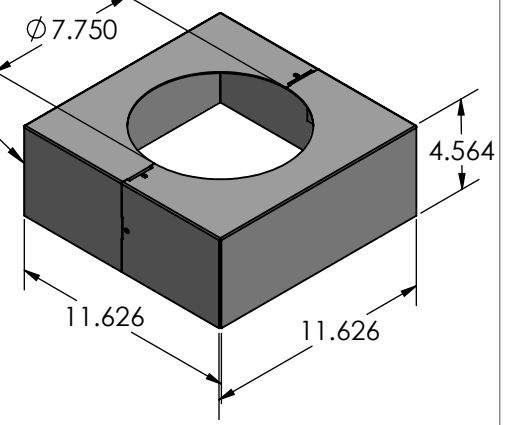
FINISH		PAINT TO ORDER	
MATERIAL #:	STEEL	AMOUNT OF PAINT	PART NO.
MATERIAL:		SCALE	1:96
MATERIAL SIZE:		CAD FILE	RTP20 Assy

DESCRIPTION				RTP 30-11	
MASS PROPERTIES	DENSITY	SURFACE AREA	VOLUME	WEIGHT	
	lbs/cu.in.	sq.in.	cu.in.	lbs	
DO NOT SCALE DRAWING	SCALE	1:96	CAD FILE	RTP20 Assy	SHEET 1 OF 2



REVISIONS				
ZONE	REV.	DESCRIPTION	DATE	APPROVED
	A	REVD SCREW DESCRIPTION	5/29/2026	PRM
	B	REVD TITLE BLOCK DESCRIPTION	6/1/2026	PRM

TACK ALL 4 CORNERS



ITEM NO.	PART NUMBER	DESCRIPTION	QTY.
1	RTP30 11	BASE COVER	2
2	P838HWHSMS	SCREW 8-15 X 3/8 HWH SS 18-8	2

PROPRIETARY AND CONFIDENTIAL
 THE INFORMATION CONTAINED IN THIS DRAWING IS THE SOLE PROPERTY OF WWW.TECHLIGHTUSA.COM ANY REPRODUCTION IN PART OR AS A WHOLE WITHOUT THE WRITTEN PERMISSION OF WWW.TECHLIGHTUSA.COM IS PROHIBITED.

DIMENSIONS ARE IN INCHES TOLERANCES: FRACTIONAL ± ANGULAR: MACH ± BEND ± TWO PLACE DECIMAL ± THREE PLACE DECIMAL ±		NAME	DATE	TECHLIGHT.COM
CREATED	6.25.25			
CHECKED				POLE BASE COVER PBCRTP30-11 ALUM
ENG APPR.				
MFG APPR.				
Q.A.				
MATERIAL RMA063		CONFIGURATION		SIZE A DWG. NO. RTP30 11 REV. B
FINISH PAINT TO ORDER				
APPLICATION	DO NOT SCALE DRAWING			SCALE:1:8 WEIGHT: SHEET 2 OF 2