

Catalog Number

Project

Type

## FEATURES & SPECIFICATIONS

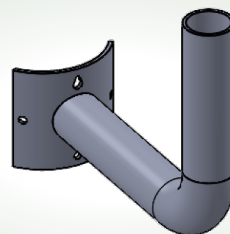
**APPLICATION** — The RTB-Q is designed for mounting floodlights and other luminaires to wood utility poles using a right-angle configuration. It is ideal for temporary data center sites and other rapid-deployment environments across the country, where durable, easy-to-install lighting infrastructure is essential. Compatible with most Techlight product families (contact your sales associate for compatibility details).

**CONSTRUCTION** — It features a 2-3/8" OD tenon (2" Schedule 40 steel pipe) welded to a 3/16" thick formed steel plate, designed for secure attachment to wood poles. The bracket is modeled after industry-standard designs, and includes reinforced weld joints for enhanced structural integrity and long-term durability. Mounting holes are pre-drilled for ease of installation. Mounting hardware is provided by others.

**FINISH** — A Super Durable Polyester powder coat finish is electrostatically applied in our state-of-the-art paint facility. Standard colors: Black (BK), Bronze (BZ), US Green (GR), White (WH). Custom colors and galvanized options available upon request.

# RTB-Q SERIES

## Right Angle Quarter Bracket - Wood Pole



SERIES	HEIGHT LENGTH & WIDTH
<b>RTB-Q</b>	12.0" x 13.1" x 2"

## ORDERING INFORMATION

Choose the bold face options for the appropriate luminaire configuration for your application and enter on the line above each fixture attribute. Accessories may be factory installed, depending on the particular accessory chosen, but still be ordered as a separate line item.

**EXAMPLE:**

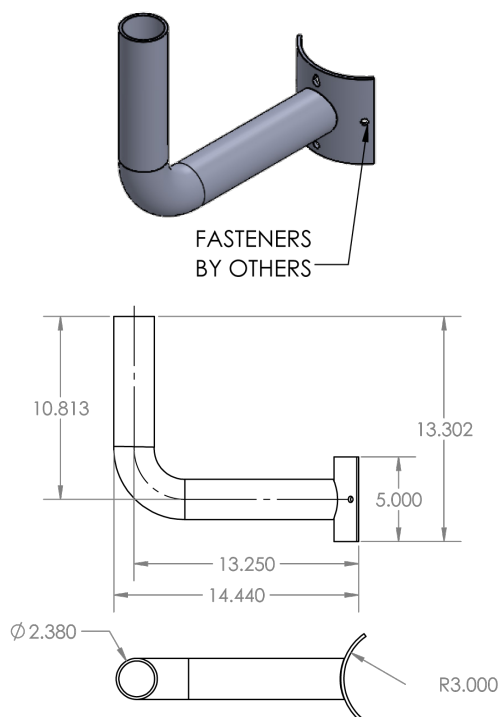
**RTBQ GLVP BZ**

RTBQ	
SERIES	FINISH
	<b>BZ</b> = Bronze
	<b>BK</b> = Black
	<b>GR</b> = US Green
	<b>WH</b> = White
	<b>SP</b> = Special <sup>1</sup>
	<b>GLVP</b> = Galvanized and Painted <sup>2</sup>

## NOTES

- 1 = Custom RAL color matching is available. Contact your sales representative for additional information.
- 2 = Must specify paint color in addition to these coating options (Example: GLVP BZ)

## BRACKET DIMENSIONS



## PLATE DIMENSIONS

